



Custom Dynamics® Shark Demon® Off Road Fog Light Kit Installation Instructions

We thank you for purchasing the Custom Dynamics® Shark Demon® Off Road Fog Light Kit. Our products utilize the latest technology and high quality components to ensure you the most reliable service. We offer one of the best warranty programs in the industry and we back our products with excellent customer support, if you have questions before or during installation of this product please call Custom Dynamics® at 1(800) 382-1388.

Part Numbers: SD-OR-FOG-W SD-OR-FOG-Y
Patent Pending

Package Contents:

- Shark Demon® Fog Light (1)
- Off Road Bracket (1)
- 8mm x 10mm Socket Head Bolts (2)
- 8mm Washers (2)
- 6mm x 10mm Socket Head Bolts (2)
- 6mm Washers (2)
- 5/16"-18 x 1.5" Hex Head Bolt (1)
- 5/16" Flat Washer (1)
- 5/16"-18 Serrated Flange Nut (1)
- 1/4"-20 x 1.5" Bolt (2)
- 1/4" Flat Washer (2)
- 1/4"-20 Serrated Flange Nut (2)
- 10" Cable Ties (10)
- Instructions (1)

Fits: Universal 12VDC negative ground systems, SXS & UTV.

Note: Use Custom Dynamics® Shark Demon® Off Road Fog Harness (CD-OR-FOG-HARN sold separately).



ATTENTION



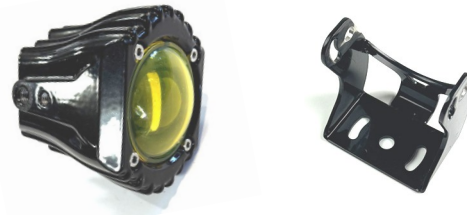
Please read all Information below before Installation

Warning: Disconnect negative battery cable from battery; refer to owner's manual. Failure to do so may result in electrical shock, injury, or fire. Secure negative battery cable away from positive side of battery and all other positive voltage sources on motorcycle.

Safety First: Always wear appropriate safety gear including safety glasses when performing any electrical work. It is highly recommended that safety glasses be worn throughout this installation process. Be sure motorcycle is on level surface, secure and cool.

Cleaning: Take special care in cleaning the finish. Never use abrasive polishes or cleaners as these can scratch and/or damage the finish. Avoid power washing/applying direct stream to aftermarket parts.

Note: Hand start all bolts, **DO NOT** use impact wrench/"zip gun" when installing.



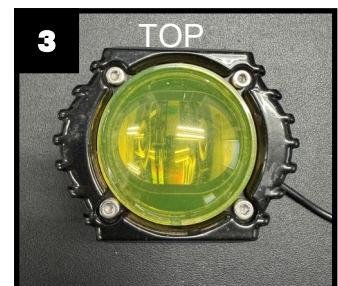
Installation:

1. Remove all necessary parts to disconnect the negative battery cable from the battery.
2. Mount the supplied Off Road Bracket using supplied 5/16"-18 x 1.5" Hex Head Bolt, Washer and Serrated Flange Nut and two 1/4"-20 x 1.5" Bolts, Washers and Serrated Flange Nuts to the desired location such as light bar or brush guards, etc.



3. Install Shark Demon® Off Road Fog Light to the Off Road Bracket using supplied 6mm x 10mm and 8mm x 10mm Hex Head Bolts and Washers.
4. The Shark Demon® Off Road Fog Lights can be mounted vertically or horizontally depending on what mount is used and how you choose to orient the Shark Demon® Fog Lights. Vertical shown in **Figure 2**, Horizontal shown in **Figure 3**.

Note: The lens must be turned with the "TOP" always to the top of the Shark Demon® Fog Light. "TOP" is etched into the top of the lens.

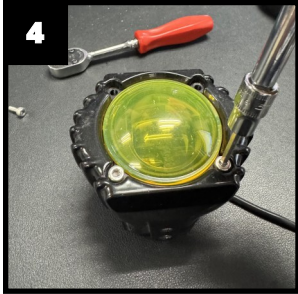


Questions? Email: info@CustomDynamics.com or Call us at: 1 (800) 382-1388 M-TH 8:30AM-5:30PM / FR 9:30AM-5:30PM EST

Installation Instruction - Page 2

Installation Continued:

5. To turn the lens of the Shark Demon® Off Road Fog Lights remove the 3mm Allen Head screws and turn the lens and reinstall the 3mm screws. Shown in **Figures 4 & 5**.



6. Use Custom Dynamics® Shark Demon® Off Road Fog Harness (**SD-OR-FOG-HARN sold separately**) to 12VDC negative ground source, follow those installation instructions for proper install.
7. Route the wires from the Shark Demon® Off Road Fog Light to the Custom Dynamics® Shark Demon® Off Road Fog Harness (**SD-OR-FOG-HARN sold separately**) and connect the JAE connectors.
8. Use the supplied Cable Ties to secure all wires from being cut, frayed or pinched.
9. Reconnect the negative battery cable to the battery and reinstall all necessary parts.
10. Test the Custom Dynamics® Shark Demon® Off Road Fog Lights for proper operation.

