

105 Baldwinville Rd, Winchendon, MA 01475  
(978)297-2977

## Ducati Hypermotard 950 Rearset Instruction Sheet – Racing Use Only

Thank you for selecting Woodcraft rearsets. The components you have purchased for your motorcycle are designed to improve the ground clearance, crash worthiness and overall looks of your motorcycle. Please note that these components are intended and approved for **racing use only**. As such, the footpegs are solid-mount and provisions for brake light switches are not provided. If you would like a brake light switch, this bike requires Woodcraft part # 03-0105.

- 1) Remove stock rearsets, footpegs and associated hardware. All components that are re-used in this kit should be cleaned and inspected for damage before re-installation.

### Brake Side Assembly Installation

- 1) **IMPORTANT:** Use **BLUE LOCTITE** on all bolts during final assembly of this rearset.

- 2) Assemble the brake pedal shaft to the 09-0652P pivot. Use loctite on all bolts when you locate your desired position for the eccentric toe piece (after step 7).

- 3) Slide the RH bracket over the swingarm pivot. Handtighten the 10 x 35 mm bolts at the lower mounts, placing the spacers as shown. Install the large aluminum OEM swingarm pivot bolt (do not use the OEM washer) through the upper mount and torque to OEM specifications. Finally, tighten the lower 04-SC1035Z bolts.

- 4) Attach the footpeg to the mount plate (05-0650MP) using the 04-FH1035Z bolt. Attach the mount plate to the bracket using two 8mm x 20BH bolts and one 8mm x 35 BH bolt through 05-0652ESP eccentric spacer in bottom position.

- 5) Attach the heel guard and master cylinder to the bracket using the 6x40mm BH bolts and spacers as shown above.

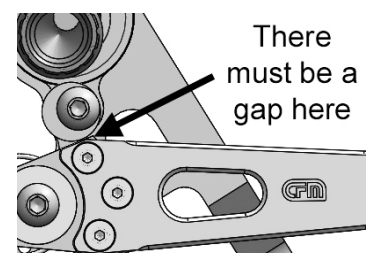
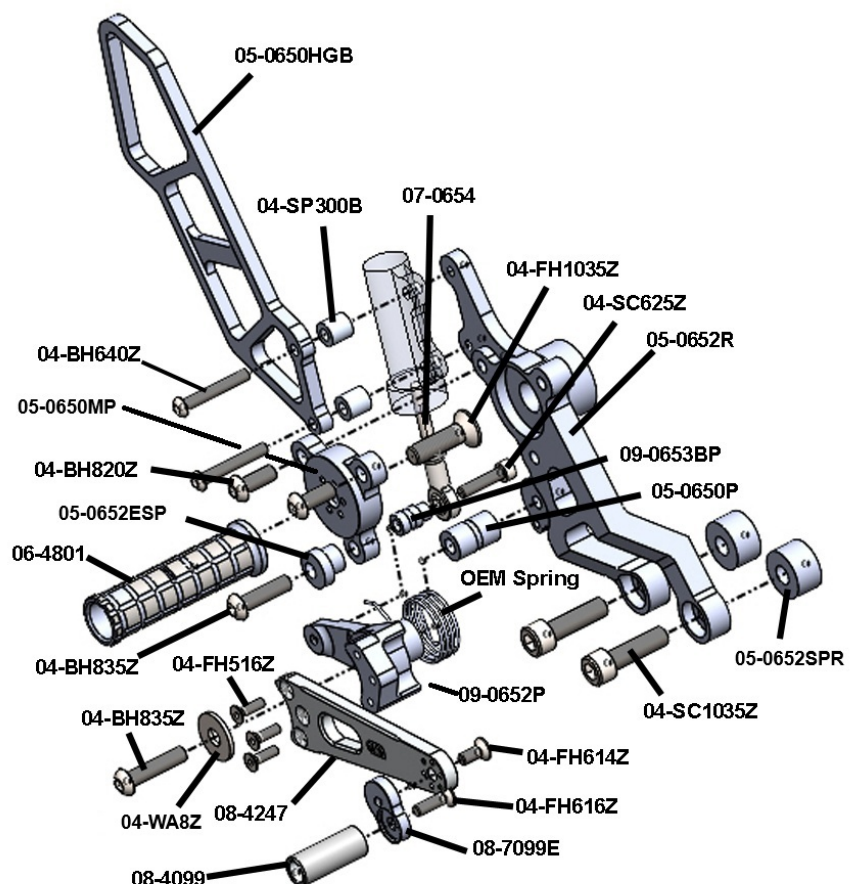
- 6) Install the brake pedal in place using the 8mm BH bolt, flat washer, 05-0650P pivot pin and the OEM return spring. Be sure to use quality waterproof grease on the pin.

- 7) At the bottom, the 6mm x 25 SC bolt goes through the OEM hiem joint, 09-0653BP pin and into the 09-0652 pivot. The 07-0654 plunger threads into the hiem and replaces the OEM part. Adjust the pedal to your desired height using either the threads on the clevice or the eccentric toe peg.

- 8) **IMPORTANT:** When the pedal is fully released, there must be a visible gap between the brake pedal and the 05-0652ESP eccentric pedal stop (see figure to right). Adjust the eccentric so that the brake pedal acts to tighten the bolt that secures it in place.

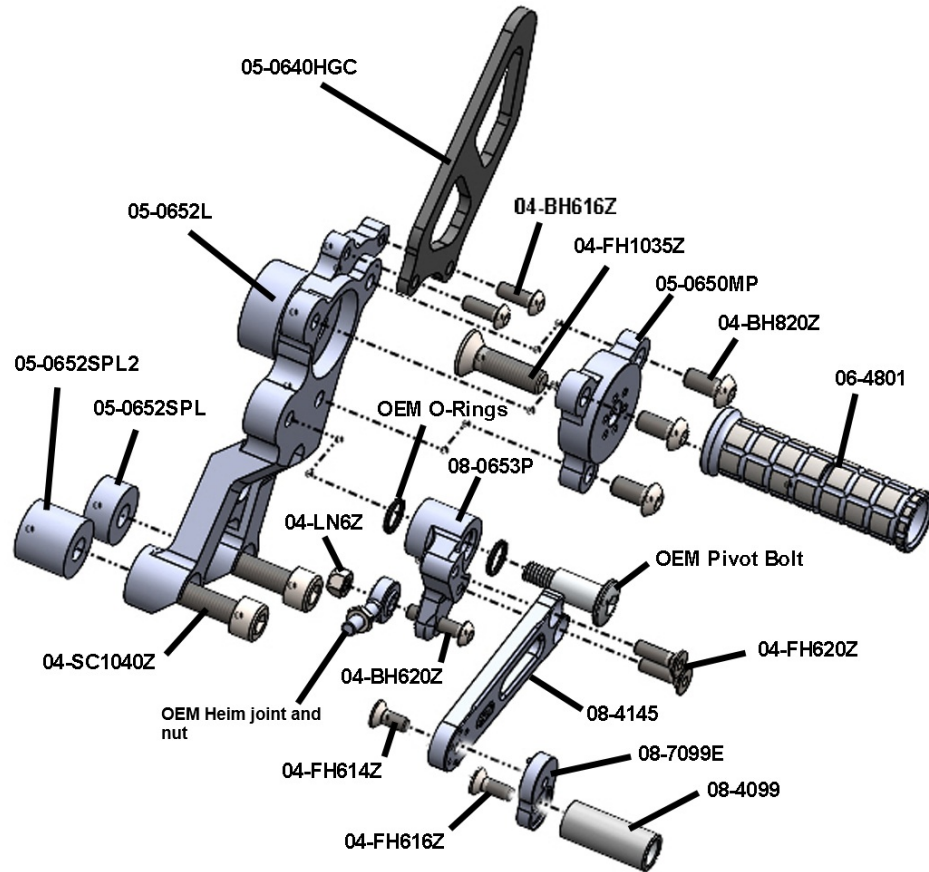
### **IMPORTANT**

Tighten all fasteners to factory specification or industry standard. FAILURE TO PROPERLY TIGHTEN ALL FASTENERS MAY CAUSE DAMAGE TO THE MOTORCYCLE, LOSS OF CONTROL AND SERIOUS INJURY OR DEATH



## Shift Side Assembly Installation

- 1) **IMPORTANT:** Use **BLUE LOCTITE on all bolts** during final assembly of this rearsset.
- 2) Assemble the shaft 08-4145 to the shift pedal pivot 08-0653P on the 6mm x 20 FH main shaft bolts. Assemble the toe peg finger tight, and secure the heim joint to the shift pivot so that it is on the inside of the pedal.
- 3) Slide the left side bracket over the swingarm pivot. Next, slide the 10 x 40 mm SC lower bolts through the bracket, spacers and kickstand. The rear spacer is shorter than the front spacer and is designed to sit on top of the kick stand mount. If you do not use the kickstand, there is a second spacer that you need to put in place of the kickstand. Install the large aluminum OEM pivot bolt (do not use the OEM washer) through the upper mount and torque to OEM specifications.
- 4) Attach the heel guard to the bracket using the included 6mm button head bolts.
- 5) Attach the footpeg to the eccentric mount plate 05-0650MP using the flat head 10mm x 35 bolt. Be sure that you select the same hole location as you did on the right side of the bike.
- 6) Install the OEM shift rod or quickshifter to the OEM heim joints and bolt the shift pedal to the bracket using the OEM pivot bolt and o-rings. Be sure to generously apply quality waterproof grease to the sliding surface of the OEM Pivot Bolt to ensure smooth lever operation.
- 7) **For STD Shift:** Flip the gear change actuator (attached to the shift shaft on the motor) approximately 160 degrees from the OEM position. Adjust the actuator on the spline until it makes as close to a 90 degree angle **with the shift rod as possible**. **If you are running standard shift WITH the OEM Quickshifter**, Install the included Quickshifter crossover cable 43-5653X **inline of the OEM harness** and Quickshifter.
- 8) Bring the pedal to the desired height using the shift rod and the pedal tip. Once the pedal is adjusted to the desired height, lock the rod in place with the OEM lock nuts.



### BE SURE THAT ALL COMPONENTS OPERATE AND RETURN FREELY BEFORE USE

If you have any questions regarding installation, please feel free to contact us.

#### **IMPORTANT**

Installation and use of this product will change the response of the motorcycle to rider control inputs. Failure of the rider to adapt to these changes may result in a loss of control, and serious injury or death. Improper installation and/or failure to comply with all warnings and instructions may cause a loss of control and serious injury or death. **DO NOT INSTALL OR USE THIS PRODUCT IF YOU ARE UNABLE TO DO SO IN COMPLIANCE WITH ALL INSTRUCTIONS AND WARNINGS. SEEK THE ASSISTANCE OF A TRAINED PROFESSIONAL TECHNICIAN.** Installation of this product releases the Woodcraft Technologies, Inc. from all liabilities as to the use of this product. The user recognizes that any alteration or modification to any motorcycle may increase the risk of injury or accident.