



YOSHIMURA

RESEARCH&DEVELOPMENT OF AMERICA, INC.

5420 DANIELS STREET STE A, CHINO CA., 91710 · (800) 634-9166 · (909) 628-4722 · FAX (909) 591-2198

www.yoshimura-rd.com

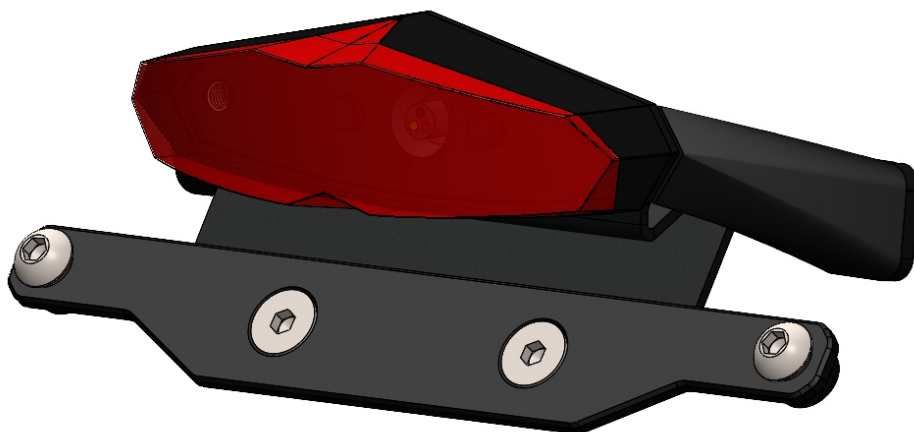
FENDER ELIMINATOR KIT

075BG116610

Suzuki

DR-Z4S

DR-Z4SM



THIS PRODUCT IS NOT DOT APPROVED.

Yoshimura R&D of America, Inc. is not liable or responsible for any resulting event caused by the installation of this product. Check with local laws and regulations for compliance prior to installation and use. This product is not intended for use on public highways.



x1



11661-FEBKT-2
Tail Light Bracket

x1



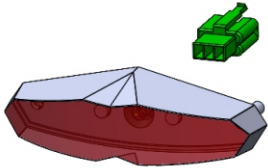
11661-FEBKT-1
Fender Bracket

x1



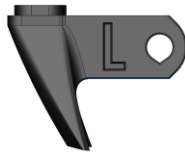
FE-LP-BKT
License Plate Bracket

x1



HB025024-E
Tail Light

x1



11661-PLG-L
Left Frame Cap

x1



11661-PLG-R
Right Frame Cap

x1



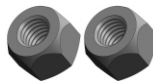
ZT-400
Cable Tie

x2



6MMWASHER-SS
6mm Washer

x2



6MMLN-SS
6mm Lock Nut

x2



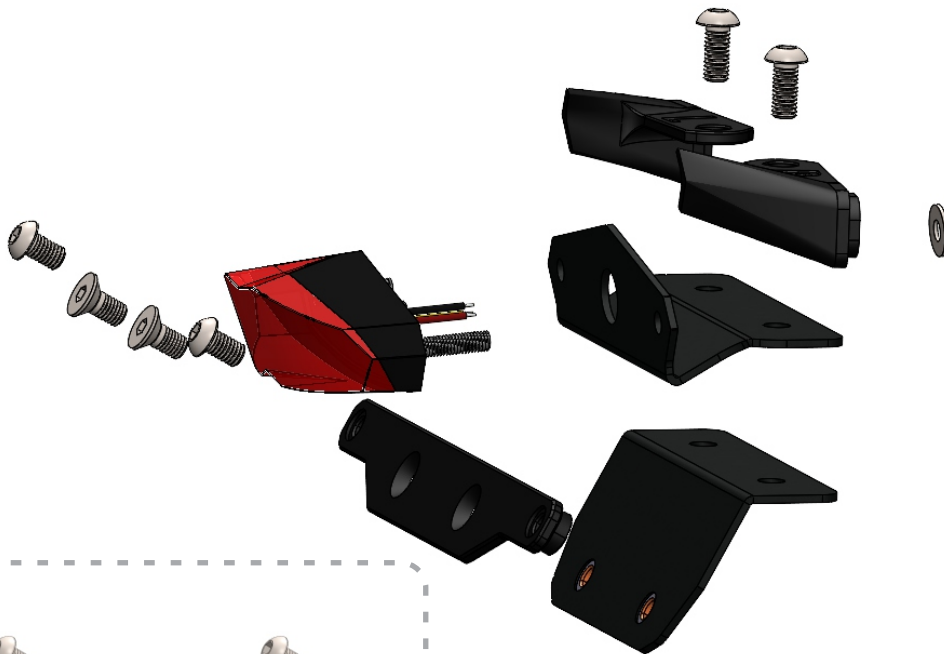
M6X12FS
Flat Head Screw

x2



M6X14BHS
6mm x 14mm
Button Head Screw

Assembly Diagram



x1



M6X10BHS
6mm x 10mm
Button Head Screw

Button head screws, washers, and lock nuts are for the bottom two license plate holes.

IMPORTANT NOTE:

This kit does not include turn signal brackets to install OEM or aftermarket turn signals.

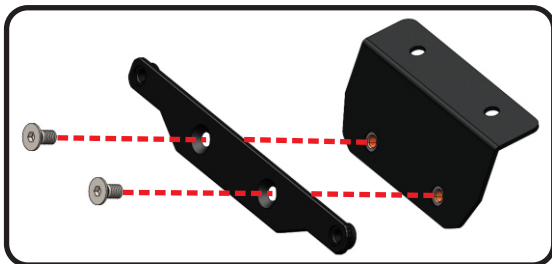
Ensure you have all necessary components prior to beginning installation.

Removal

1. Remove the black side fairing overlapping the rear number plate on both sides and remove both rear number plates.
2. Loosen the seat strap and remove the seat.
3. Remove the bolt and locknut securing the tail fairing to the sub-frame.
4. Remove the rear fender's inner panel on the underside (2 bolts).
5. Disconnect license plate light and turn signal connectors.
6. Remove the hardware securing the rear fender to the frame (4 bolts and 2 hex screws).
7. While supporting rear fender assembly, disconnect and unclip the tail light connector from the rear fender assembly's mounting tab.

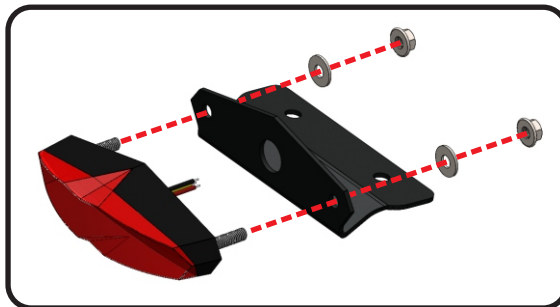
Installation

1. Mount *FE-LP-BKT*, license plate bracket onto *11661-FEBKT-1*, fender eliminator bracket using *M6X12FS*, flat head screws.

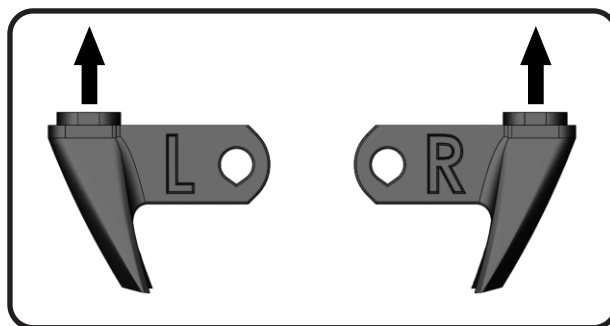


Note: *M6X10BHS*, button head screws will be used to secure the license plate to *FE-LP-BKT*, license plate bracket. *6MMLN-SS*, nylon lock nuts and *6MMWASHER-SS*, washers are for the bottom license plate holes.

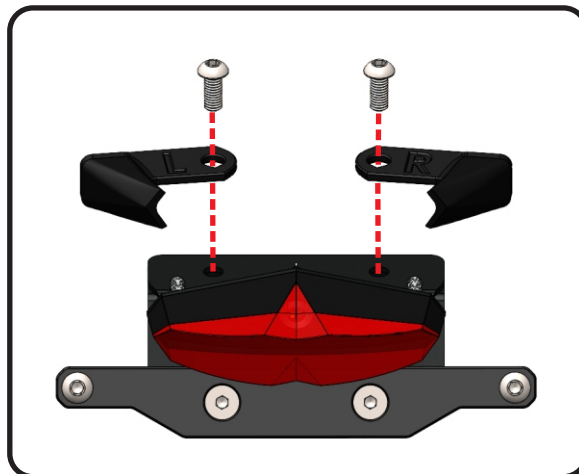
2. Mount *HB025024-E*, tail light to *11661-FEBKT-2*, light bracket.



3. Insert *11661-PLG-L* and *11661-PLG-R*, frame plugs into their corresponding frame members.



4. Slide *11661-FEBKT-1* and *11661-FEBKT-2* between the sub-frame and frame plugs and secure using *M6X14BHS*, button head screws.



5. Connect *HB025024-E*, tail light connector to the wiring harness.
6. Use *ZT-400*, cable tie to secure the wiring harness to the left frame member.
7. Reinstall the fairings and seat using the reverse steps of removal.

8. Check for proper function of license plate light, turn signals, brake light, and that all brackets and components are secure prior to riding.