

# WOODCRAFT

Technologies, Inc.

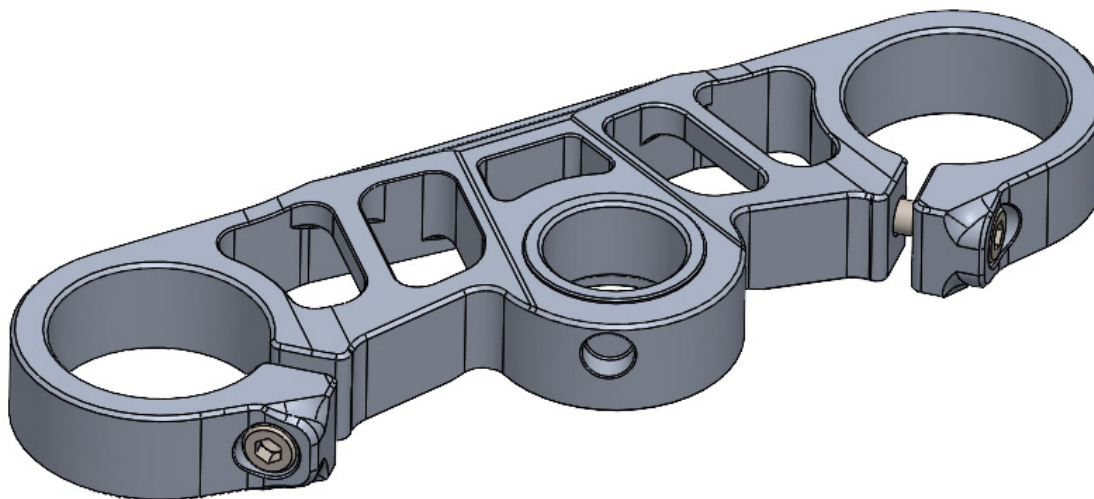
## Aprilia RS457 Top Triple Clamp Installation Instructions

**WARNING** Installation and use of some Woodcraft Technologies, Inc. products will change the response of the motorcycle to rider control inputs. Failure of the rider to adapt to these changes may cause loss of control, and serious injury or death. Improper installation, and/or failure to comply with all warnings and instructions may cause loss of control and serious injury or death. **DO NOT INSTALL OR USE ANY WOODCRAFT TECHNOLOGIES, INC. PRODUCTS IF YOU ARE UNABLE TO DO SO IN COMPLIANCE WITH ALL INSTRUCTIONS AND WARNINGS. SEEK THE ASSISTANCE OF AN EXPERIENCED TECHNICIAN.**

- 1) Completely remove your stock grips, hand controls and top triple clamp/handlebar assembly.
- 2) Slide to Woodcraft top triple clamp in place of your OEM clamp.
- 3) Using the OEM center triple clamp bolt and washer, secure the Woodcraft clamp to the Aprilia steering stem. Tighten the bolt to factory specification.
- 4) To finish the installation, tighten the 8mm socket cap pinch bolts on each fork leg. We generally arrive at the final torque (17 ft-lbs) in three sequential steps.



This kit has a provision for the stock steering lock, which may be used in the same fashion as the OEM clamp. With the top clamp in place you can now install the clipons of your choice.



**WARNING - VERY IMPORTANT** : Ensure that the cables, hoses and all control parts do not contact any part of the motorcycle and that you have full ability to manipulate the controls throughout the entire range of steering. Also, be sure that the throttle returns freely after being fully opened throughout the entire range of steering. **FAILURE TO HEED THESE WARNINGS MAY CAUSE LOSS OF CONTROL OF MOTORCYCLE AND SERIOUS INJURY OR DEATH. DO NOT OPERATE THE MOTORCYCLE IF THERE ARE ANY INTERFERENCE ISSUES WITH EITHER THE MOTORCYCLE PARTS OR YOUR BODY, OR WITH A THROTTLE THAT DOES NOT RETURN FREELY.**