



700 S. Hathaway St. Unit E  
Banning, CA. 92220  
web: <http://www.imsproducts.com>  
Orders: (800) 237-9906  
Information: (951) 653-7720  
FAX: (951) 653-1060

### YAMAHA:

YZ-85

(02-21)

TANK ID : YZ-22

IMS PART # : 117328

2.2 Gallons

### PARTS LIST

- (1) Fuel Tank
- (1) Gas Cap-322100-BLK\*
- (1) SEAL-322101\*
- (\*Excluded on Dry-Break\*)
- (1) Petcock Gasket (#322141)

### STOCK ITEMS TO USE

- Petcock & Fuel Line
- Left Mount Grommet & Sleeve, Right Mount Bracket Assembly w/screws
- Gas Cap Vent Hose
- Seat Hook Fixture

## WARNING!

Clean Tank Interior Thoroughly Before Installation. Install This Fuel Tank **ONLY** In a Well Ventilated Area, As Gasoline Fumes Are **EXTREMELY** Dangerous. **DO NOT START OR OPERATE THE VEHICLE IF THERE ARE ANY FUEL LEAKS!** IMS Recommends That Installation Be Done By a Licensed Mechanic. Read All Instructions First Before Beginning Installation.

## TANK REMOVAL

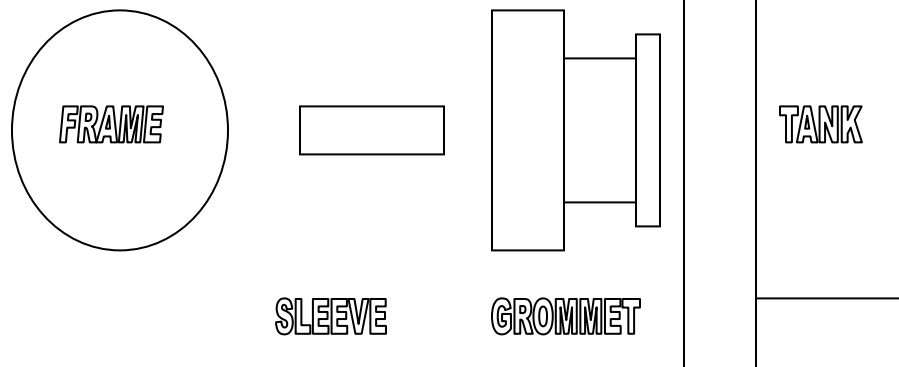
Drain the fuel from stock tank into approved gasoline container. Remove the seat, radiator shroud, and the fuel line at carburetor. Unbolt and remove tank from the frame. Remove right (left when looking at bottom of tank) tank mount bracket assembly. Leave left mount bracket attached to stock tank and remove just rubber grommet and sleeve. Remove the petcock and seat hook fixture from tank.

## TANK INSTALLATION

Mount your stock petcock, seat hook and right mount bracket assembly to IMS tank. Next install the rubber grommet into molded loop on left side then insert the metal sleeve into grommet.

Place **IMS** tank on frame and fasten using stock screws. Connect the fuel line to the carb. Install the shroud & seat. Place your vent line on the **IMS** gas cap.

Be sure that the tank is mounted securely and does not bind or in any way inhibit the controls or function of the vehicle. Ensure that there are no sharp objects that rub against the tank that may eventually puncture the tank and that the fuel line is not kinked or touching anything that could get hot. Turn the petcock to the closed position. Fill the fuel tank & **CHECK FOR ANY LEAKS AND ENJOY YOUR RIDE!!**



**"FOR COMPETITION USE ONLY"**

**"Legal in California ONLY for racing vehicles which may never be used upon a highway."**

### **DISCLAIMER:**

Due to uncontrolled variables in the manufacturing process of rotationally molded fuel tanks, the fuel tank may vary in size and shape by up to 7% of the manufacturer's original listed capacity