

POWER COMMANDER 6

Installation Guide for: PC6-26003

Model Coverage: 2009-2017 Moto Guzzi Griso 1200

PARTS LIST

- | | |
|----------------------|--------------------------|
| 1 POWER COMMANDER 6 | 2 POWER COMMANDER DECALS |
| 1 INSTALLATION GUIDE | 2 VELCRO STRIPS |
| 1 USB CABLE | 1 ALCOHOL SWAB |
| 2 DYNOJET DECALS | 1 POSI-TAP |

**PLEASE READ ALL DIRECTIONS BEFORE STARTING INSTALLATION.
THE IGNITION MUST BE TURNED OFF BEFORE INSTALLATION.**



INPUT ACCESSORY GUIDE



OPTIONAL ACCESSORY INPUTS

- Map** (Input 1 or 2) The PC6 has the ability to hold 2 different base maps. You can switch on the fly between these two base maps when you hook up a switch to the MAP inputs. You can use any open/close type switch. The polarity of the wires is not important.
- Shifter** (Input 1 or 2) Used for clutch-less full throttle upshifts. Insert the wires from the Dynojet quick shifter into either Input 1 or Input 2. The polarity of the wires is not important. Set to Input 2 by default.
- Speed** If your application has a speed sensor then you can tap into the signal side of the sensor and run a wire into this input. This will allow you to calculate gear position in the Control Center Software. Once gear position is setup you can alter your map based on gear position and setup gear dependent kill times when using a quick shifter.
- Analog** This input is for a 0-5v signal such as engine temp, boost, etc. Once this input is established you can alter your fuel curve based on this input in the Power Core software.
- Launch** You can connect a wire to either Input 1 or Input 2 and then the other end to a switch. This switch when engaged (continuity) will only allow the RPM to be raised to a certain limit (set in the software). When released, you will have full RPM.

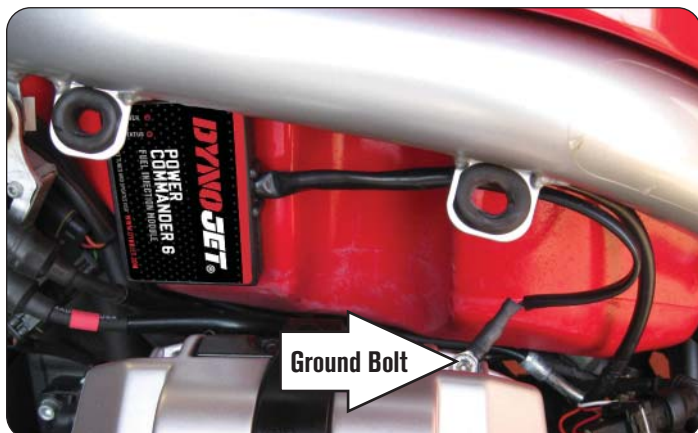
WIRE CONNECTIONS

To input wires into the PC6 first remove the rubber plug on the backside of the unit and loosen the screw for the corresponding input. Using a 22-24 gauge wire, strip about 10mm from its end. Push the wire into the hole of the PC6 until it stops and then tighten the screw. Make sure to reinstall the rubber plug.

NOTE: If you tin the wires with solder it will make inserting them easier.

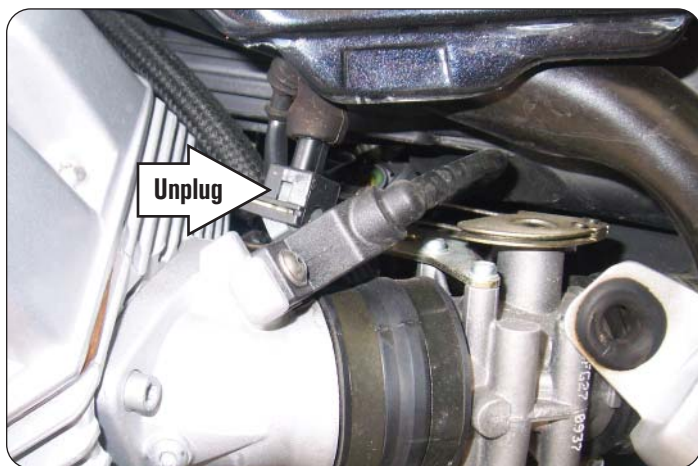


INSTALLING THE POWER COMMANDER 6



- 1 Remove the seat.
- 2 Remove the fuel tank side covers.
- 3 Secure the PC6 module to the left side of the fuel tank with the supplied Velcro.

Clean both surfaces with the supplied alcohol swab prior to applying the Velcro adhesive.
- 4 Attach the PC6 ground wire with the small ring lug to the valve cover bolt shown.

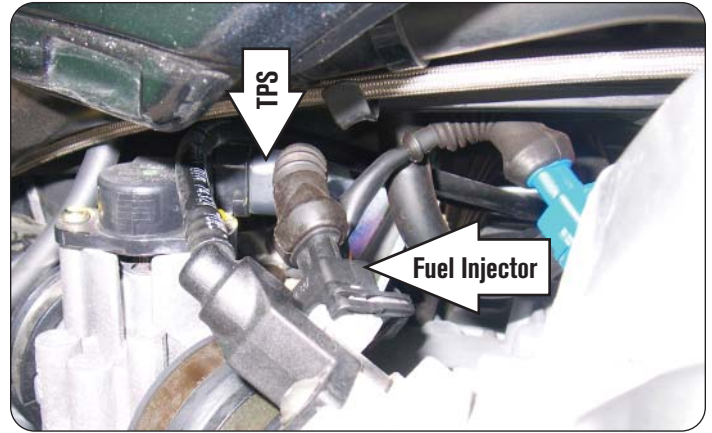


- 5 Unplug the stock wiring harness from the fuel injector on the LEFT cylinder head.



- 6 Plug the pair of PC6 leads with ORANGE colored wires in-line of the LEFT cylinder fuel injector and the stock wiring harness.

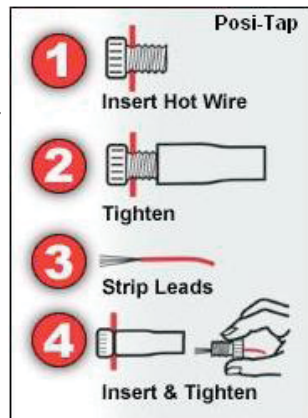
- 7 Unplug the stock wiring harness from the injector.
- 8 Unplug the stock wiring harness from the Throttle Position Sensor.



- 9 Using the supplied Posi-tap, attach the GREY wire of the PC6 to the stock RED wire of the TPS wiring harness.

This is position "C" on the stock TPS connector.

- 10 Plug the stock TPS connector back onto the TPS.



- 11 Plug the pair of PC6 leads with YELLOW colored wires in-line of the RIGHT cylinder fuel injector and the stock wiring harness.
- 12 Reinstall the seat and side covers.

Download the latest map files from our web site at dynojet.com/tunes.





**PUSH
THE
LIMIT**

2191 MENDENHALL DRIVE, NORTH LAS VEGAS, NV 89081 - 800-992-4993 - DYNOJET.COM
© 2009-2021 DYNOJET RESEARCH ALL RIGHTS RESERVED