

POWER COMMANDER 6

Install guide for: PC6-21012

Model coverage:

2011-2016 Triumph Bonneville

2011-2016 T100/Thruxton

PARTS LIST

×

- | | | | |
|---|------------------------|---|---------------|
| 1 | POWER COMMANDER 6 | 2 | VELCRO STRIPS |
| 1 | INSTALLATION GUIDE | 1 | ALCOHOL SWAB |
| 1 | USB CABLE | 1 | POSI-TAP |
| 2 | DYNOJET DECALS | 1 | ZIP TIE |
| 2 | POWER COMMANDER DECALS | | |

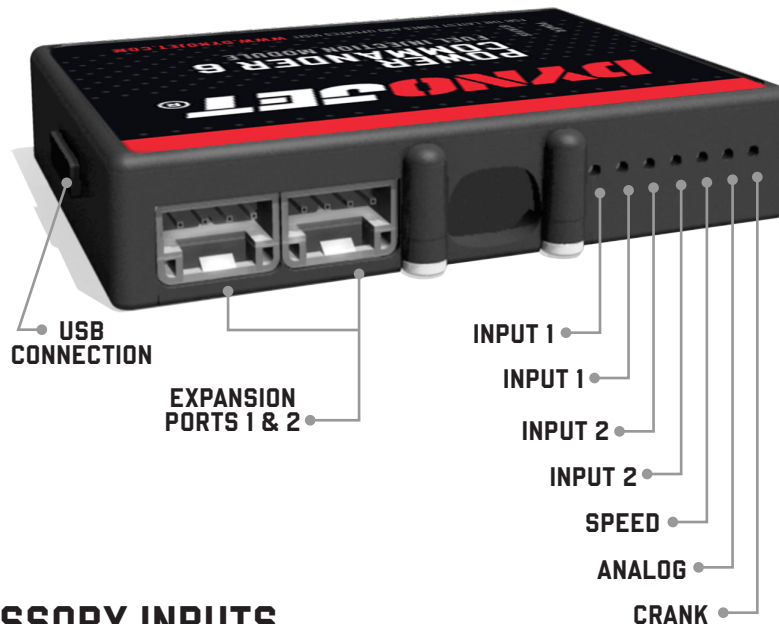
**PLEASE READ ALL DIRECTIONS BEFORE STARTING INSTALLATION.
THE IGNITION MUST BE TURNED OFF BEFORE INSTALLATION.**

×

IPC6-21012.01

**TRIPLE
DYNOJET**

INPUT ACCESSORY GUIDE



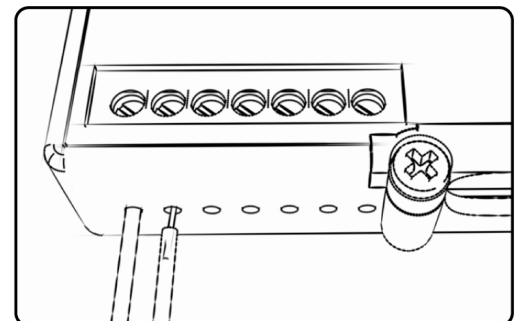
OPTIONAL ACCESSORY INPUTS

- Map** (Input 1 or 2) The PC6 has the ability to hold 2 different base maps. You can switch on the fly between these two base maps when you hook up a switch to the MAP inputs. You can use any open/close type switch. The polarity of the wires is not important.
- Shifter** (Input 1 or 2) Used for clutch-less full throttle upshifts. Insert the wires from the Dynojet quick shifter into either Input 1 or Input 2. The polarity of the wires is not important. Set to Input 2 by default.
- Speed** If your application has a speed sensor then you can tap into the signal side of the sensor and run a wire into this input. This will allow you to calculate gear position in the Control Center Software. Once gear position is setup you can alter your map based on gear position and setup gear dependent kill times when using a quickshifter.
- Analog** This input is for a 0-5v signal such as engine temp, boost, etc. Once this input is established you can alter your fuel curve based on this input in the Power Core software.
- Launch** You can connect a wire to either Input 1 or Input 2 and then the other end to a switch. This switch when engaged (continuity) will only allow the RPM to be raised to a certain limit (set in the software). When released, you will have full RPM.

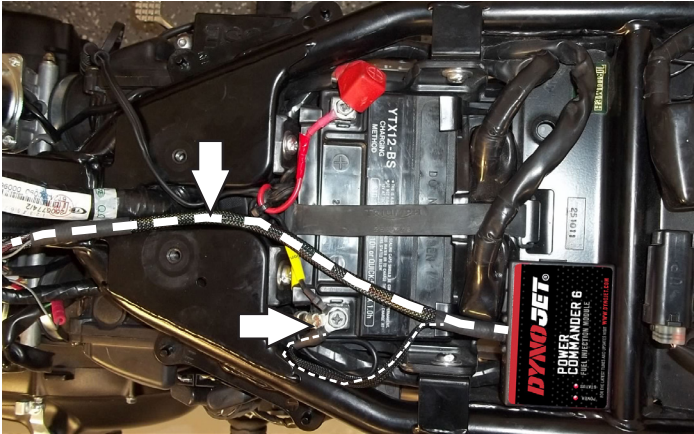
WIRE CONNECTIONS

To input wires into the PC6 first remove the rubber plug on the backside of the unit and loosen the screw for the corresponding input. Using a 22-24 gauge wire, strip about 10mm from its end. Push the wire into the hole of the PC6 until it stops and then tighten the screw. Make sure to reinstall the rubber plug.

NOTE: If you tin the wires with solder it will make inserting them easier.



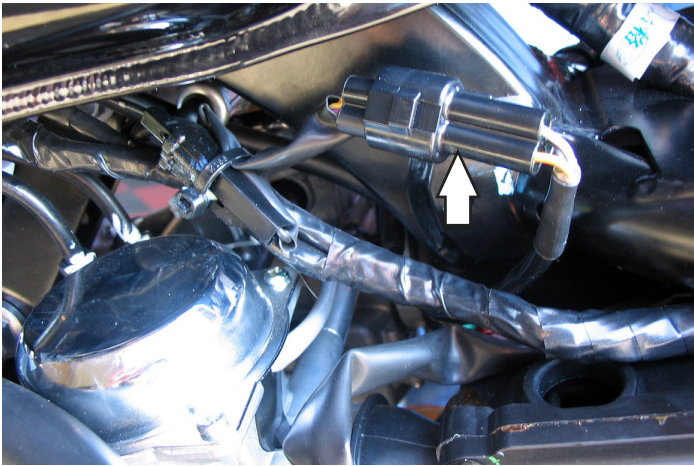
INSTALLING THE POWER COMMANDER 6



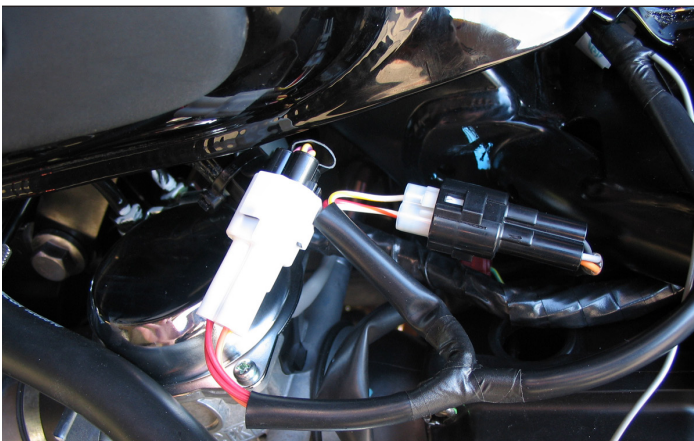
- 1 Remove the seat, both side covers, and the fuel tank.
- 2 Using the supplied Velcro, secure the PC6 to the frame just rear of the battery.

Make sure to clean the surfaces with the alcohol swab before attaching.

- 3 Secure the PC6 ground wire with the small ring lug to the negative (-) terminal of the bike's battery.
- 4 Route the PC6 harness forward following along the left side of the frame.

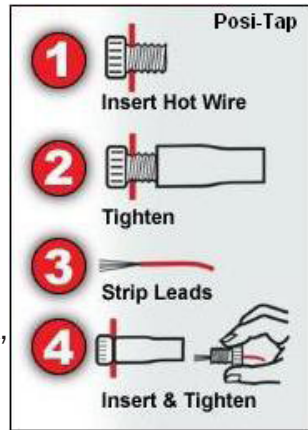


- 5 Unplug the BLACK 3-pin connector for the bike's Fuel Injectors on the left side of the frame behind and above the left throttle body.

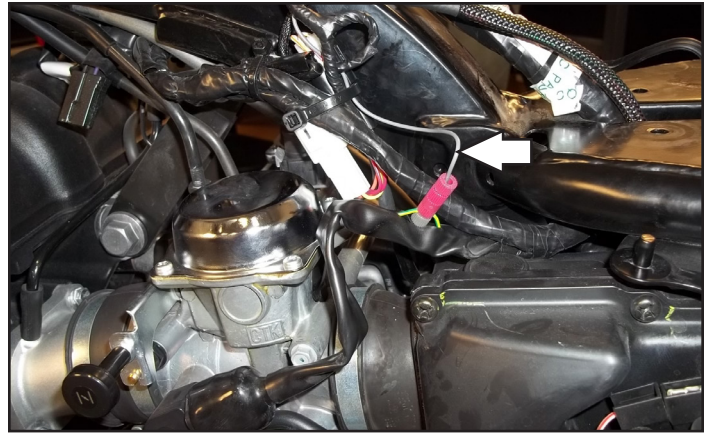


- 6 Plug the pair of 3-pin connectors of the PC6 wiring harness in-line of the stock Fuel Injector connectors.

- 7 Attach the supplied Posi-tap to the stock GREEN/YELLOW wire of the Throttle Position Sensor wiring harness.

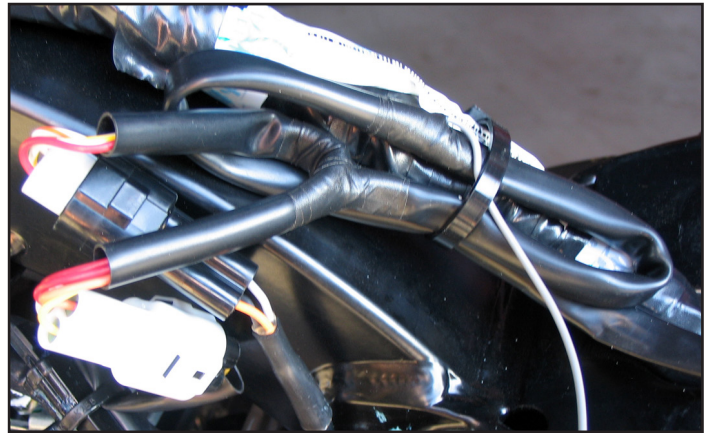


For a cleaner install cut through the stock wiring harness sheathing for the TPS to access the wire near the top of the air box, so that the connection will be behind the left side cover after it is reinstalled.



- 8 Connect the GREY wire from the PC6 wiring harness to the Posi-tap.

It is recommended to use dielectric grease on these connections.



- 9 Using the supplied zip tie, secure the PC6 harness to the main wiring harness.

- 10 Locate and unplug the stock wiring harness for the bike's Crank Position Sensor.

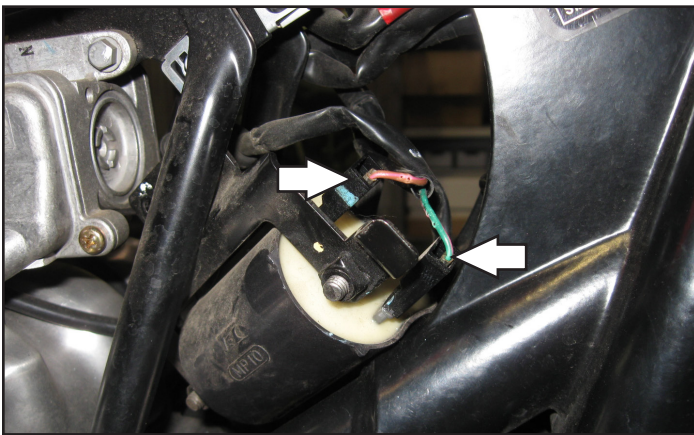
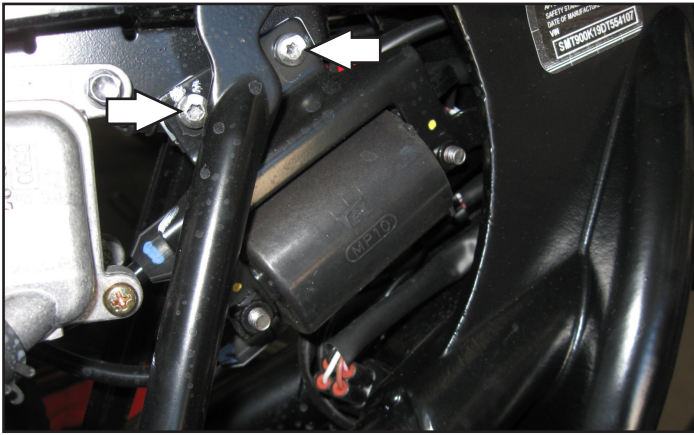
This is a 2-pin connector pair (1 BLACK connector and 1 WHITE connector) located rear of the right side throttle body. It can be difficult to find. This is usually stuffed between the top of the air box and the frame on the right side of the bike. You may need to cut zip ties and/or pull the wiring out from between the frame and air box to access this connector.



- 11 Plug the pair of 2-pin WHITE connectors of the PC6 wiring harness in-line of the stock CPS connectors.

- 12 Route the rest of the PC6 wiring harness with the spade connectors forward to the Ignition Coil following along the stock wiring harness on the left side of the frame.





- 13 Remove the two bolts securing the coil bracket to the frame.

This will allow access to the coil wires.

- 14 Unplug both of the stock wires from the ignition coil.
- 15 Plug the pair of PC6 wiring harness spade terminals with GREEN colored wires in-line of the Ignition Coil and the stock GREEN/PINK wire.
- 16 Plug the pair of PC6 wiring harness spade terminals with RED colored wires in-line of the Ignition Coil and the stock BROWN/PINK wire.
- 17 Re-secure the coil bracket and Ignition Coil to the frame.
- 18 Reinstall the fuel tank, making sure the PC6 wiring harness does not get pinched.
- 19 Reinstall the seat and the side covers.
- 20 Affix the supplied CARB E.O. label to a conspicuous area. The best location is next to the original emissions label. Make sure to clean the surface before attaching the label.

Download the latest map files from our web site at dynojet.com/tunes.



PUSH THE LIMIT

2191 MENDENHALL DRIVE, NORTH LAS VEGAS, NV 89081 - 800-992-4993 - DYNOJET.COM

© 2011-2021 DYNOJET RESEARCH ALL RIGHTS RESERVED