

POWER COMMANDER 6

Installation Guide for: PC6-22006

Model Coverage: 2009-2011 Yamaha R1

YAMAHA

PARTS LIST

×

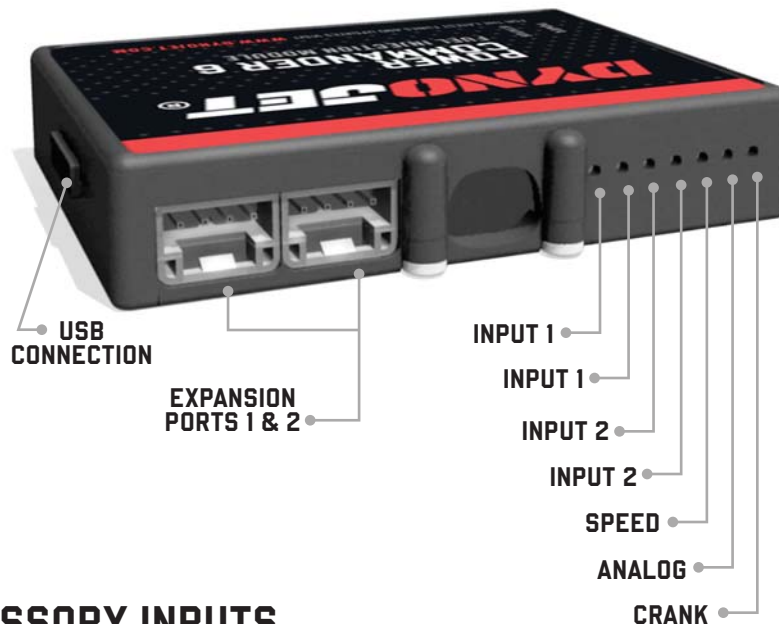
- | | |
|----------------------|--------------------------|
| 1 POWER COMMANDER 6 | 2 POWER COMMANDER DECALS |
| 1 INSTALLATION GUIDE | 2 VELCRO STRIPS |
| 1 USB CABLE | 1 ALCOHOL SWAB |
| 2 DYNOJET DECALS | 1 POSI-TAP |

**PLEASE READ ALL DIRECTIONS BEFORE STARTING INSTALLATION.
THE IGNITION MUST BE TURNED OFF BEFORE INSTALLATION.**

×

IPC6-22006.01

INPUT ACCESSORY GUIDE



OPTIONAL ACCESSORY INPUTS

- Map** (Input 1 or 2) The PC6 has the ability to hold 2 different base maps. You can switch on the fly between these two base maps when you hook up a switch to the MAP inputs. You can use any open/close type switch. The polarity of the wires is not important.
- Shifter** (Input 1 or 2) Used for clutch-less full throttle upshifts. Insert the wires from the Dynojet quick shifter into either Input 1 or Input 2. The polarity of the wires is not important. Set to Input 2 by default.
- Speed** If your application has a speed sensor then you can tap into the signal side of the sensor and run a wire into this input. This will allow you to calculate gear position in the Control Center Software. Once gear position is setup you can alter your map based on gear position and setup gear dependent kill times when using a quick shifter.
- Analog** This input is for a 0-5v signal such as engine temp, boost, etc. Once this input is established you can alter your fuel curve based on this input in the Power Core software.
- Launch** You can connect a wire to either Input 1 or Input 2 and then the other end to a switch. This switch when engaged (continuity) will only allow the RPM to be raised to a certain limit (set in the software). When released, you will have full RPM.

WIRE CONNECTIONS

To input wires into the PC6 first remove the rubber plug on the backside of the unit and loosen the screw for the corresponding input. Using a 22-24 gauge wire, strip about 10mm from its end. Push the wire into the hole of the PC6 until it stops and then tighten the screw. Make sure to reinstall the rubber plug.

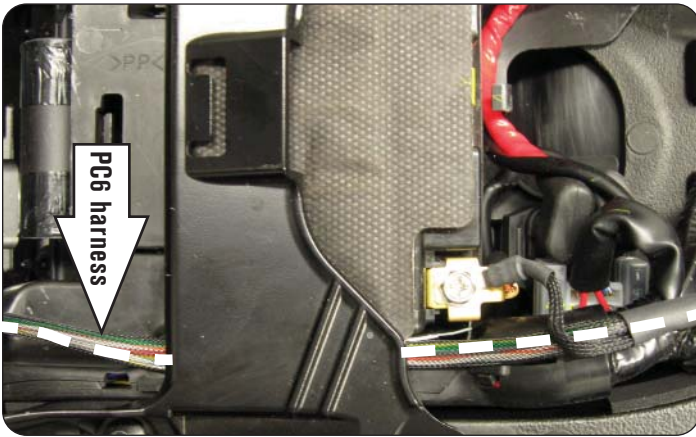
NOTE: If you tin the wires with solder it will make inserting them easier.



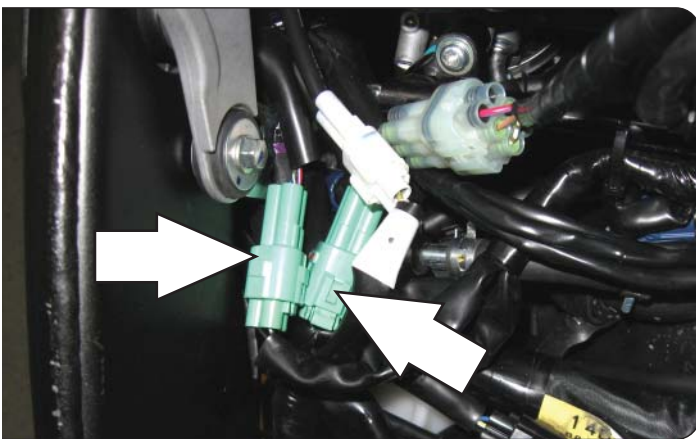
INSTALLING THE POWER COMMANDER 6



- 1 Remove the main seat.
- 2 Lift the front of the fuel tank up and use something to keep it propped up.
- 3 Remove the inner fairing on the left hand side of the bike.



- 4 Lay the PC6 near the battery and route the harness down the left side of the bike. Route the harness underneath the battery bracket.
- 5 Attach the ground wire of the PC6 to the negative side of the battery.



- 6 Unplug the connectors from the throttle bodies to the main wiring harness.

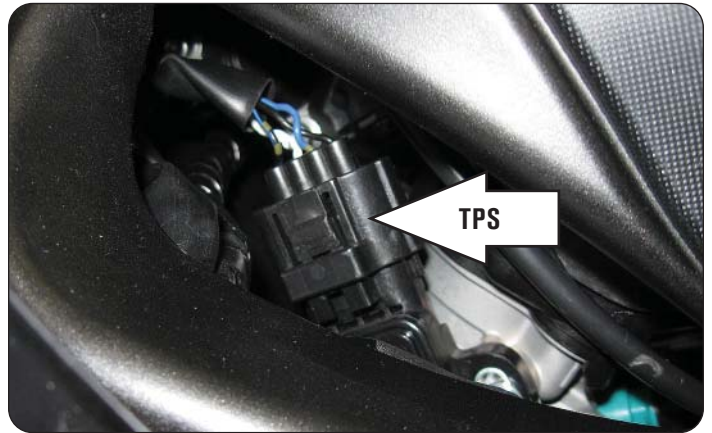
There is a GREEN 3 pin connector and a GREEN 4 pin connector to the inside of the frame on the left side.

7 Plug the PC6 harness in-line of the stock wiring harness and throttle bodies.



8 Unplug the wiring harness from the Throttle Position Sensor.

This connector is located on the left side of the throttle bodies underneath the inner fairing that was removed in step 3.



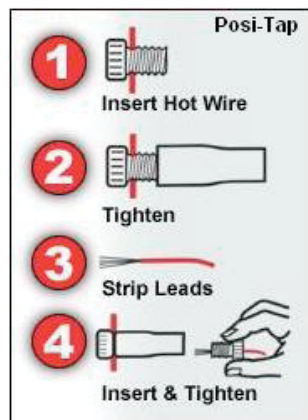
9 Using the supplied Posi-tap attach the GREY wire of the PC6 to the WHITE wire of the TPS harness.

10 Plug the TPS back on to the throttle bodies

11 Install the PC6 in the tail section using the supplied velcro if needed.

12 Reinstall fuel tank back into place and bodywork.

Download the latest map files from our web site at dynojet.com/tunes.



Speed input location - Top of engine case on left hand side. PINK wire on sensor side - WHT/YELwire on ECU side.

Temperature input location - Temperature sensor is located on back of cylinder near #3 throttle body. GRN/WHT wire to ECU. Pin #34 on small ECU connector

12v for Autotune - BLU/RED wire of tail light connector.





PUSH THE LIMIT

2191 MENDENHALL DRIVE, NORTH LAS VEGAS, NV 89081 - 800-992-4993 - DYNOJET.COM

© 2009-2022 DYNOJET RESEARCH ALL RIGHTS RESERVED