

POWER COMMANDER 6

Installation Guide for: PC6-14029

Model Coverage: 2015-2019 Ducati Scrambler

SCRAMBLER
POWER COMMANDER 6

PARTS LIST

×

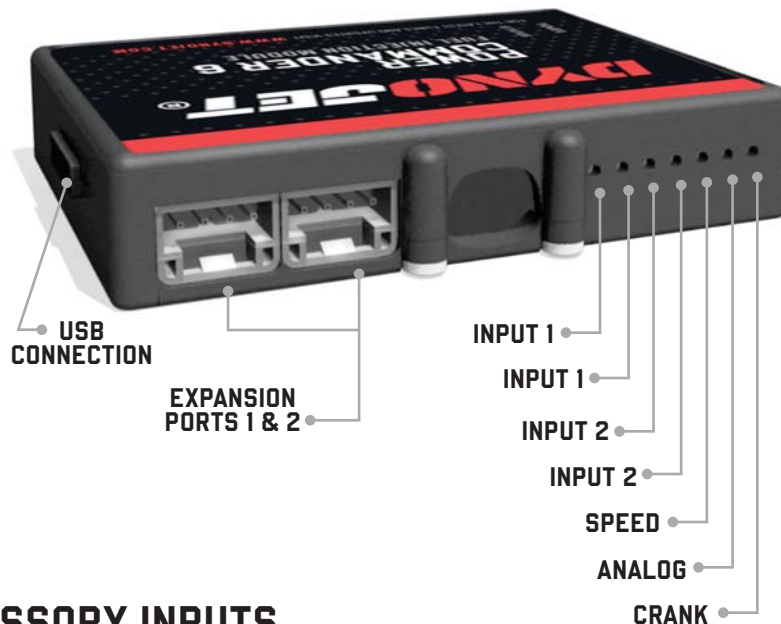
- | | |
|----------------------|--------------------------|
| 1 POWER COMMANDER 6 | 2 POWER COMMANDER DECALS |
| 1 INSTALLATION GUIDE | 2 VELCRO STRIPS |
| 1 USB CABLE | 1 ALCOHOL SWAB |
| 2 DYNOJET DECALS | 1 POSI-TAP |

**PLEASE READ ALL DIRECTIONS BEFORE STARTING INSTALLATION.
THE IGNITION MUST BE TURNED OFF BEFORE INSTALLATION.**

×

IPC6-14029.01

INPUT ACCESSORY GUIDE



OPTIONAL ACCESSORY INPUTS

- Map** (Input 1 or 2) The PC6 has the ability to hold 2 different base maps. You can switch on the fly between these two base maps when you hook up a switch to the MAP inputs. You can use any open/close type switch. The polarity of the wires is not important.
- Shifter** (Input 1 or 2) Used for clutch-less full throttle upshifts. Insert the wires from the Dynojet quick shifter into either Input 1 or Input 2. The polarity of the wires is not important. Set to Input 2 by default.
- Speed** If your application has a speed sensor then you can tap into the signal side of the sensor and run a wire into this input. This will allow you to calculate gear position in the Control Center Software. Once gear position is setup you can alter your map based on gear position and setup gear dependent kill times when using a quick shifter.
- Analog** This input is for a 0-5v signal such as engine temp, boost, etc. Once this input is established you can alter your fuel curve based on this input in the Power Core software.
- Launch** You can connect a wire to either Input 1 or Input 2 and then the other end to a switch. This switch when engaged (continuity) will only allow the RPM to be raised to a certain limit (set in the software). When released, you will have full RPM.

WIRE CONNECTIONS

To input wires into the PC6 first remove the rubber plug on the backside of the unit and loosen the screw for the corresponding input. Using a 22-24 gauge wire, strip about 10mm from its end. Push the wire into the hole of the PC6 until it stops and then tighten the screw. Make sure to reinstall the rubber plug.

NOTE: If you tin the wires with solder it will make inserting them easier.



INSTALLING THE POWER COMMANDER 6



- 1 Remove the seat, the small plastic panel in the frame on the right side of the bike, and the plastic panel at the front of the fuel tank.
- 2 Remove the small plastic panel in the frame on the left side of the bike.



- 3 On the right side of the bike remove the PAIR valve and its bracket.



- 4 Using the supplied Velcro, secure the PC6 module to the top of the bike's ECU.
Make sure to use the supplied alcohol swab to clean both surfaces before attaching the Velcro.
- 5 Secure the PC6 ground wire with the small ring lug to the negative (-) terminal of the bike's battery.
- 6 Route the PC6 wiring harness towards the engine along the inside of the right frame rail.

- 7 Route the PC6 wiring harness to the opening in the frame on the right side of the bike. Keep the PC6 harness inside of the frame rails.

Once there, continue routing the pair of 3-pin connectors and the pair of connectors with YELLOW colored wires of the PC6 harness to the same area on the left side of the bike going straight through the middle of the bike.

It is important to have the PC6 wiring harness fully routed before making the connections. Be sure to keep the PC6 wiring harness free and clear of any hot or moving parts.

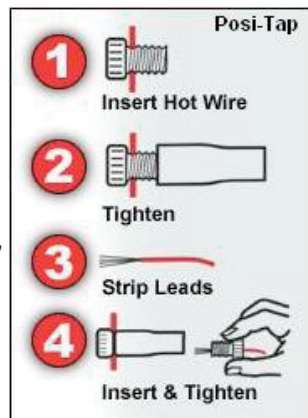


- 8 On the right side of the bike, unplug the stock connector for the Front Cylinder Fuel Injector.

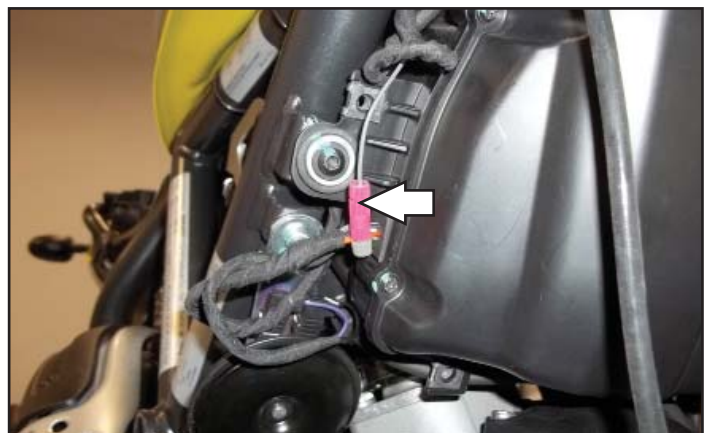


- 9 Plug the pair of PC6 leads with ORANGE colored wires in-line of the Front Cylinder Fuel Injector and the stock wiring harness.

- 10 Route the single unterminated GREY wire of the PC6 wiring harness forward to the right side of the air box keeping it inside of the frame rail.



- 11 Use the supplied posi-tap, to attach the PC6 GREY wire to the stock ORANGE wire right where the stock wiring goes into the air box.



- 12 On the left side of the bike, unplug the Rear Cylinder Fuel Injector and the stock Crank Position Sensor connectors.





- 13 Plug the pair of PC6 connectors with YELLOW colored wires in-line of the Rear Cylinder Fuel Injector and the stock wiring harness.
- 14 Plug the pair of 3-pin PC6 connectors in-line of the stock Crank Position Sensor connectors.
- 15 Reinstall the PAIR valve and bracket, the bodywork, and the seat.

Download the latest map files from our web site at dynojet.com/tunes.



PUSH THE LIMIT

2191 MENDENHALL DRIVE, NORTH LAS VEGAS, NV 89081 - 800-992-4993 - DYNOJET.COM

© 2015-2022 DYNOJET RESEARCH ALL RIGHTS RESERVED