

POWER COMMANDER 6

Install guide for: PC6-12022

Model coverage: 2015-2018 BMW S1000XR

POWER COMMANDER 6

PARTS LIST

×

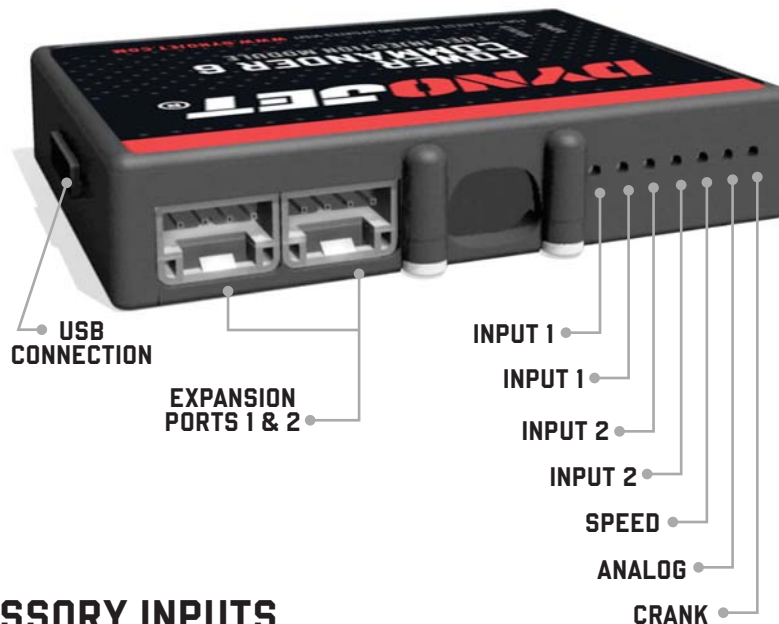
- | | |
|----------------------|--------------------------|
| 1 POWER COMMANDER 6 | 2 POWER COMMANDER DECALS |
| 1 INSTALLATION GUIDE | 2 VELCRO STRIPS |
| 1 USB CABLE | 1 ALCOHOL SWAB |
| 2 DYNOJET DECALS | 2 POSI-TAPS |

**PLEASE READ ALL DIRECTIONS BEFORE STARTING INSTALLATION.
THE IGNITION MUST BE TURNED OFF BEFORE INSTALLATION.**

×

IPC6-12022.01

INPUT ACCESSORY GUIDE



OPTIONAL ACCESSORY INPUTS

- Map** (Input 1 or 2) The PC6 has the ability to hold 2 different base maps. You can switch on the fly between these two base maps when you hook up a switch to the MAP inputs. You can use any open/close type switch. The polarity of the wires is not important.
- Shifter** (Input 1 or 2) Used for clutch-less full throttle upshifts. Insert the wires from the Dynojet quick shifter into either Input 1 or Input 2. The polarity of the wires is not important. Set to Input 2 by default.
- Speed** If your application has a speed sensor then you can tap into the signal side of the sensor and run a wire into this input. This will allow you to calculate gear position in the Control Center Software. Once gear position is setup you can alter your map based on gear position and setup gear dependent kill times when using a quickshifter. .
- Analog** This input is for a 0-5v signal such as engine temp, boost, etc. Once this input is established you can alter your fuel curve based on this input in the Power Core software.
- Launch** You can connect a wire to either Input 1 or Input 2 and then the other end to a switch. This switch when engaged (continuity) will only allow the RPM to be raised to a certain limit (set in the software). When released, you will have full RPM.

WIRE CONNECTIONS

To input wires into the PC6 first remove the rubber plug on the backside of the unit and loosen the screw for the corresponding input. Using a 22-24 gauge wire, strip about 10mm from its end. Push the wire into the hole of the PC6 until it stops and then tighten the screw. Make sure to reinstall the rubber plug.

NOTE: If you tin the wires with solder it will make inserting them easier.



INSTALLING THE POWER COMMANDER 6



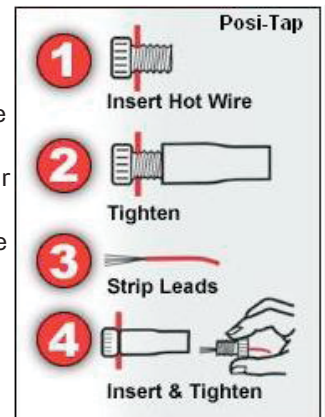
- 1 Remove the seat, the side panels and fairings, the bodywork surrounding the fuel tank, and the fuel tank itself.
- 2 Using the supplied Velcro, secure the PC6 module in the tail section.

Clean both surfaces with the supplied alcohol swab prior to attaching the Velcro.

- 3 Route the PC6 wiring harness forward towards the engine following inside the left frame spar.



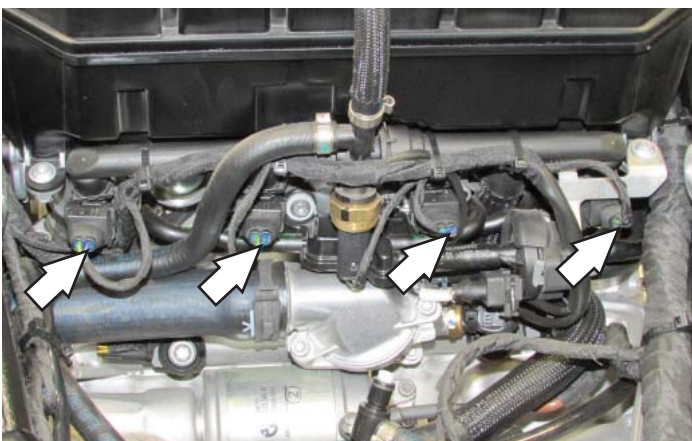
- 4 Using one of the supplied posi-taps, attach the PC6 BLUE/WHITE wire to the stock PURPLE/BLACK wire (middle wire) of the stock 3-pin Gear Position Sensor connector located on the frame of the left side of the bike.



There are two PURPLE/BLACK wires on this connector. Go to the one in the middle.

This is an optional 0-5v analog gear position signal input.

- 5 Unplug each fuel injector.



- 6 Plug the PC6 harness in-line of the stock wiring harness and each Fuel Injector.

PC6 harness:

ORANGE - cylinder #1 (left)

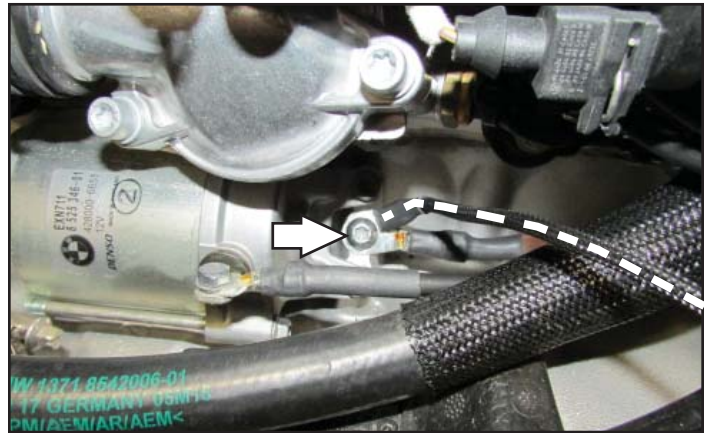
YELLOW - cylinder #2

GREEN - cylinder #3

BLUE - cylinder #4 (right)



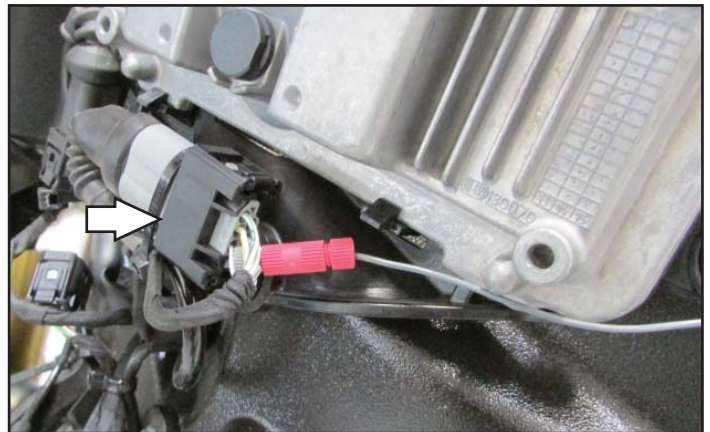
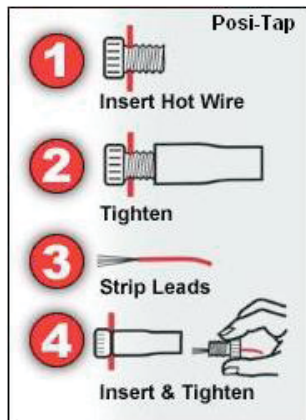
- 7 Secure the PC6 ground wire with the small ring lug to the stock common ground bolt on the engine case just rear of the starter.



- 8 Route the PC6 GREY wire to the stock throttle body connector.

This is a 6-pin connector located below the stock ECU on the outside of the frame on the left side of the bike.

- 9 Use the other supplied posi-tap to attach the PC6 GREY wire to the stock WHITE/GREY wire of the throttle body connector.



- 10 Reinstall the fuel tank, bodywork, and the seat.

Download the latest map files from our web site at dynojet.com/tunes.



PUSH THE LIMIT

2191 MENDENHALL DRIVE, NORTH LAS VEGAS, NV 89081 - 800-992-4993 - DYNOJET.COM

© 2015-2022 DYNOJET RESEARCH ALL RIGHTS RESERVED