



YOSHIMURA

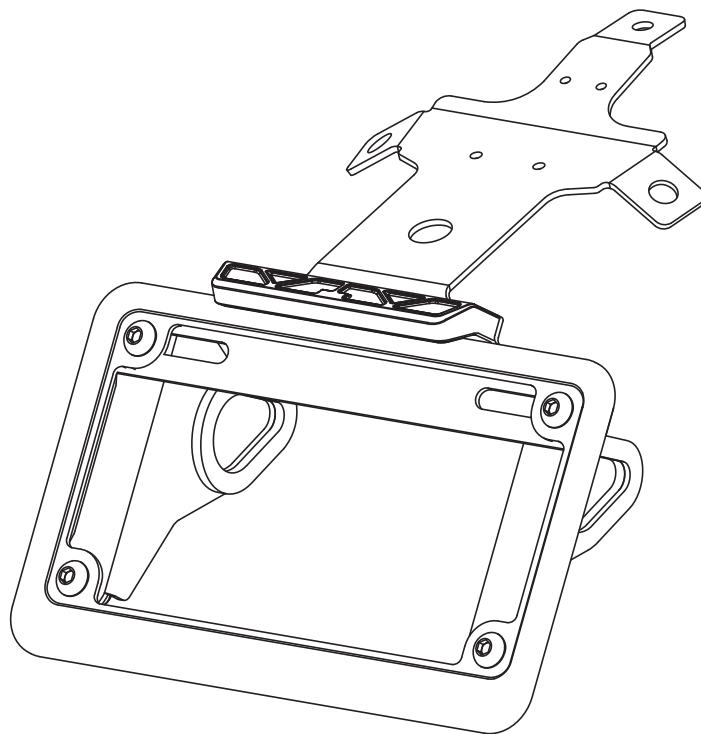
RESEARCH&DEVELOPMENT OF AMERICA, INC.

5420 DANIELS STREET STE A, CHINO CA., 91710 · (800) 634-9166 · (909) 628-4722 · FAX (909) 591-2198

www.yoshimura-rd.com

FENDER ELIMINATOR KIT

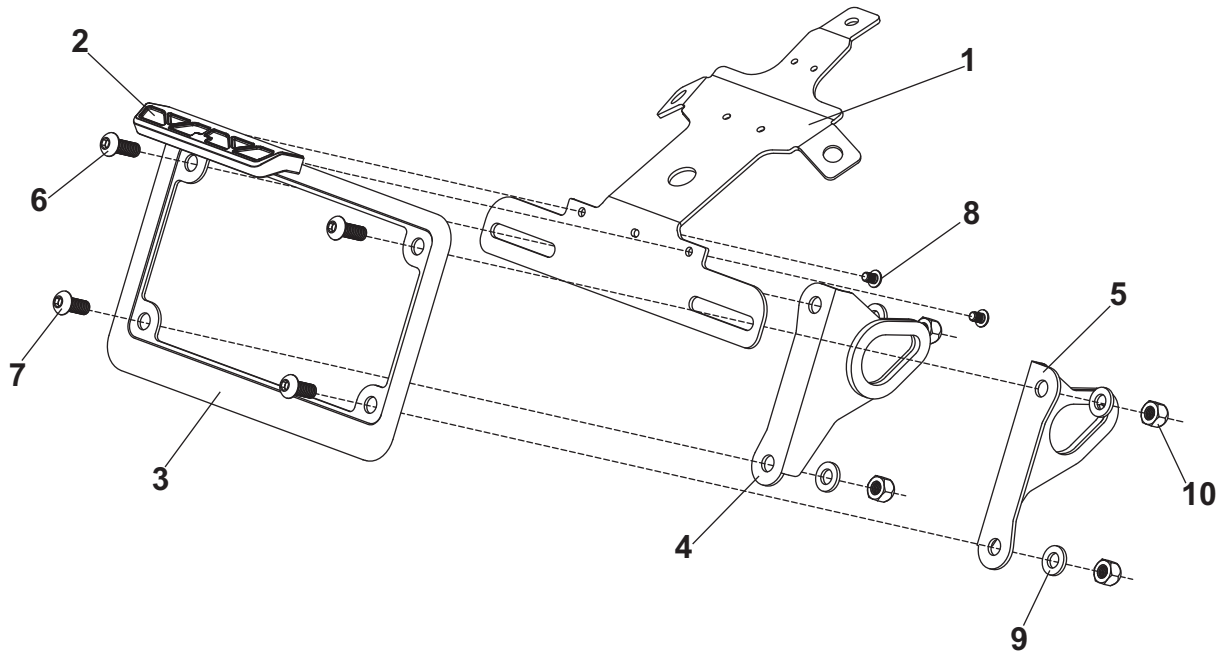
070BG137500
Yamaha XSR700



THIS PRODUCT IS NOT DOT APPROVED.

Yoshimura R&D of America, Inc. is not liable or responsible for any resulting event caused by the installation of this product. Check with local laws and regulations for compliance prior to installation and use. This product is not intended for use on public highways.





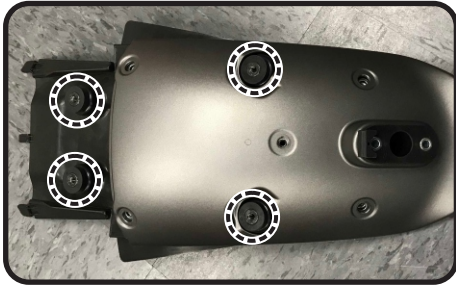
No.	Item	Description	Qty.
1	13750-FEBKT	Fender Eliminator Bracket	1
2	070BG-LH-K1	LED License Plate Light	1
3	070BG-LPF	License Plate Frame	1
4	13630-TSBL-00	Left Turn Signal Bracket	1
5	13630-TSBR-00	Right Turn Signal Bracket	1
6	M6X16BHS	6mm x 16mm Button Head Screw	2
7	M6X14BHS	6mm x 14mm Button Head Screw	2
8	M4X6BHS	4mm x 6mm Button Head Screw	2
9	6MMWASHER	6mm Washer	4
10	6MMLN	6mm Nylon Lock Nut	4
**	BN-SSS-22-18	Butt Connectors	2
**	ZT-400	Cable Ties	3
**	17029	Yoshimura Sticker Sheet	1
Optional Parts			
***	070BGUNVTBKT	Universal Turn Signal Bracket Kit	

** Not shown on diagram.

*** The Yoshimura Universal Turn Signal Bracket Kit is to be used with aftermarket stud-mounted turn signals and is sold separately.

Removal

1. Remove rider seat.
2. Locate and disconnect license plate light, turn signal, and brake/tail light connectors.
3. While securely supporting the stock fender assembly, remove the four bolts securing fender assembly to chassis and carefully remove the fender assembly.



4. Remove the five bolts securing upper rear fender cover to the lower mud guard.



5. Remove the two tapping screws securing lower rear fender cover to the underside of lower mud guard. The lower rear fender cover will not be reused.



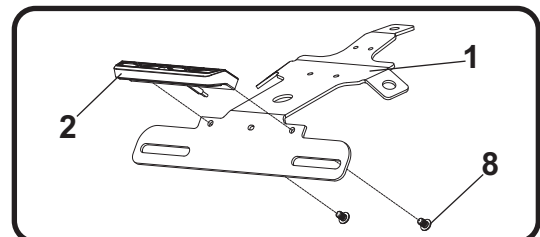
6. Disassemble the stock fender assembly and remove left and right turn signals from lower mud guard.
7. Cut the stock license plate light connector from the stock fender assembly. Be sure to cut at least a 6" section of wire from the connector.

Installation

1. Using masking tape and marker, mark and mask lower mud guard as shown.



2. Cut and trim lower mud guard using a rotary tool. File edges smooth removing any burrs.
3. Install (No. 2) 070BG-LH-K1, LED light onto (No. 1) 13750-FEBKT, fender eliminator bracket using (No. 8) M4X6BHS, 4mm screws.



- Route wire through hole in (No. 1) *13750-FEBKT*, fender eliminator bracket and using the *BN-SSS-22-18*, butt connectors provided in the kit, connect Yoshimura license plate light wires to the stock license plate light wires as follows:

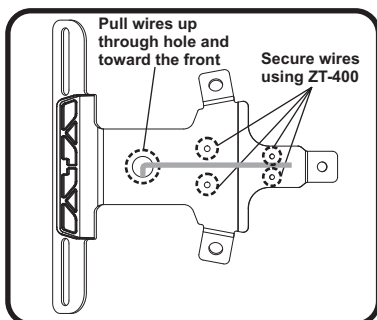
Red -to- Blue
Black -to- Black

- Strip the stock fender light wire ends 1/4" - 1/2" and insert into *BN-SSS-22-18*, butt connectors provided in the kit.
- Center the spliced wire ends in the middle and using a heatgun or lighter, apply heat evenly on the outer edges of the butt connector to shrink and hold wires in place.
- Making sure that the stripped ends are centered, heat the center of the butt connector evenly until the solder begins to liquify.
- Allow to cool completely and tug both ends of the wires to verify that connection is secured.

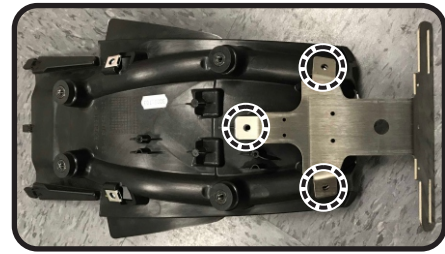
Scan for link to butt connector instruction video.



- Install the stock left and right turn signals onto (No. 4,5) *13630-TSBL/R-00*, turn signal brackets using the stock hardware.
- Install (No. 4,5) *13630-TSBL/R-00*, turn signal brackets and (No. 3) *070BG-LPF*, license plate frame using the (No. 6,7) *M6X16BHS* and *M6X14BHS*, 6mm button head screws as shown in the diagram.
- Route turn signal wires through hole in (No. 1) *13750-FEBKT*, fender eliminator bracket. Secure license plate light wire and turn signal wires to (No. 1) *13750-FEBKT*, fender eliminator bracket using supplied *ZT-400*, cable ties.



- Place (No. 1) *13750-FEBKT*, assembled fender eliminator bracket on top of the trimmed lower mud guard and align the three mounting holes.



- Place upper rear fender cover on top of (No. 1) *13750-FEBKT*, fender eliminator bracket and lower mud guard. Align the five mounting holes and secure using the stock fender cover bolts.



- Re-install the stock fender assembly to chassis using the four stock bolts.



- Re-connect license plate light, turn signal, and tail / brake light connectors.
- Re-install rider seat.
- Check for proper function of license plate light, turn signals, brake light, and that all brackets and components are secure prior to riding.