

**PARTS  
UNLIMITED**

**PARTS  
EUROPE**

**PARTS  
CANADA**

DISTRIBUTED IN THE U.S. BY:  
DISTRIBUÉ AUX U.S.A. PAR:  
VERTRIEBEN IN DEN U.S.A. DURCH:  
DISTRIBUITO NEGLI USA DA:  
DISTRIBUIDO EN LOS EE.UU. POR:  
DISTRIBUTEUR IN DE VS:  
DISTRIBUÍDO NOS E.U.A. POR:  
РАСПРОСТРАНЯЮТСЯ В США:  
Америка:

**PARTS UNLIMITED®**

DISTRIBUTED IN EUROPE BY:  
DISTRIBUÉ EN EUROPE PAR:  
VERTRIEBEN IN EUROPA DURCH:  
DISTRIBUITO IN EUROPA DA:  
DISTRIBUIDO EN EUROPA POR:  
DISTRIBUTEUR IN EUROPA:  
DISTRIBUÍDO NA EUROPA POR:  
РАСПРОСТРАНЯЮТСЯ В ЕВРОПЕ:  
ヨーロッパ:

**PARTS EUROPE GMBH**  
CONRAD-ROENTGEN-STR. 2., 54332  
WASSERLIESCH, GERMANY

DISTRIBUTED IN CANADA BY:  
DISTRIBUÉ AU CANADA PAR:  
VERTRIEBEN IN KANADA DURCH:  
DISTRIBUITO IN CANADA DA:  
DISTRIBUIDO EN CANADÁ POR:  
DISTRIBUTEUR IN CANADA:  
DISTRIBUÍDO NO CANADÁ POR:  
РАСПРОСТРАНЯЮТСЯ В КАНАДЕ:  
Канада:

**PARTS CANADA®**

ICON® IS A REGISTERED TRADEMARK. ALL RIGHTS RESERVED. COPYRIGHT© 2018 LEMANS CORPORATION.  
REPLACEMENT PARTS AND SPECIFICATIONS SUBJECT TO CHANGE WITHOUT NOTICE. PRINTED IN VIETNAM.  
J-TECH CORP. Made in Vietnam ECE/DOT/PSC

**icon**  
RIDEICON.COM

**icon**

NOT TO BE REMOVED EXCEPT BY CONSUMER

**DOT // ECE**

# AIRFORM™

## OWNERS INSTRUCTION MANUAL



**SAFETY WARNING: FOR YOUR SAFETY, IT IS IMPORTANT THAT YOU COMPLETELY READ THIS OWNER'S MANUAL AND ALL WARNING LABELS ON AND INSIDE THE HELMET.**

The instructions in this manual are designed to help you select the right helmet, wear it properly, take care of it and know when to replace it. Failure to follow these instructions may increase your risk of serious injury or death in an accident. In order to get the most protection possible from your helmet, you should always do the following – Wear your helmet when you ride, Handle your helmet carefully to avoid accidental damage and ride safe. Do not take risks because you are wearing a helmet.

# AIRFORM™

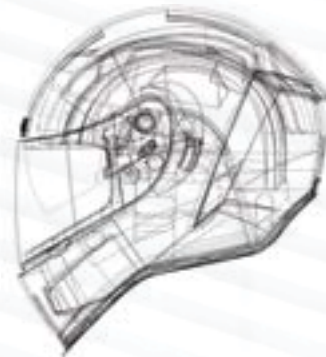
Leaders of the modern helmet game, ICON Motorsports is always pushing the envelope of street style design and the Airform is no exception. Its base level price delivers pro level features including an interchangeable DropShield™, a sculpted neck roll to avoid jacket or suit interference, and integrated speaker pockets for a bluetooth communication device. The 4 intake vents, 1 exhaust port, and air channeling in the EPS provide you engineered air flow for all day riding comfort.

Design-Develop-Deploy: We're setting the new asphalt tech standards with the ICON Airform™ helmet.



## CONTENTS

// CONSTRUCTION	03
// SHELL & EPS	04
// CHOOSING THE CORRECT HELMET SIZE	05
// PROPER FITTING	06
// CHINSTRAP	07
// USING YOUR HELMET CORRECTLY	08
// INSPECTING YOUR HELMET	08
// AIRFORM FACE SHIELDS	09
// ICON OPTICS CHANGE AND REMOVAL	11
// DROPSHIELD CHANGE AND REMOVAL	12
// COMFORT LINER REMOVAL AND REASSEMBLY	13
// VENTING SYSTEM	14
// CARE AND CLEANING	15
// ADVISORY	16



**USE INSTRUCTIONS AND WARNINGS:** Before using this helmet, be sure to read this instruction manual and retain it after reading. It contains valuable information that will help you maximize the performance and life of the helmet.

**SAFETY WARNING:** Riding a motorcycle is a dangerous activity. No helmet can protect a wearer against all possible impacts. When riding, always wear a helmet, eye protection, protective clothing, gloves and boots. There is no assurance that serious injury or death can be avoided even if you wear the helmet shown in this manual. Take all precautions to avoid every risk when riding a motorcycle. This helmet is not meant for use as a fire retardant product and does not contain any fire retardant materials. Please ensure that your ICON® products fit properly. Improperly fitting products can impair your ability to control your motorcycle.



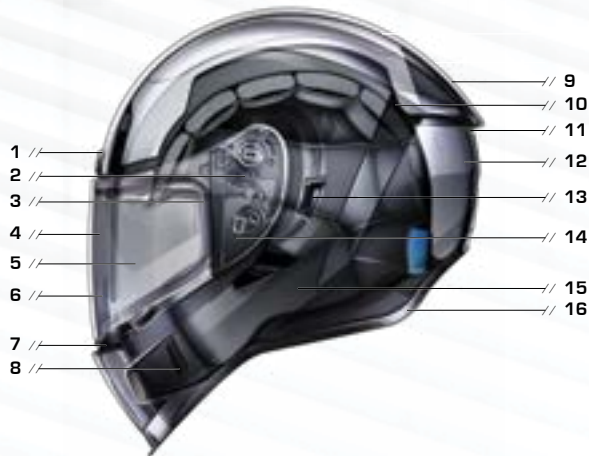
PROLOCK™  
SHELO LOCKING SYSTEM

DROPSHIELD

## CONSTRUCTION

The ICON® AIRFORM™ is engineered to the ICON WORLD STANDARD, which meets DOT FMVSS 218 (US), ECE 22.05 (EUROPE), & PSC (JAPAN) Helmet Safety Standards. Over 50 countries officially recognize these extensive head protection standards. Refer to the diagram below to familiarize yourself with specific names and terms used on the AIRFORM™ helmet before attempting to repair or replace parts on the helmet.

- 1 // FOREHEAD VENTS
- 2 // SHIELD RELEASE SYSTEM
- 3 // EYEPORT GASKET
- 4 // ICON OPTICS™ SHIELD
- 5 // DROPSHIELD™
- 6 // BREATH DEFLECTOR
- 7 // MOUTH VENT
- 8 // CHIN INTAKE VENTS
- 9 // OUTER SHELL
- 10 // REAR SPOILER
- 11 // EXHAUST VENTS
- 12 // DUAL DENSITY EPS
- 13 // DROPSHIELD™ SWITCH
- 14 // SIDEPLATE
- 15 // COMFORT LINER
- 16 // BASE GASKET



**MAKE NO MODIFICATIONS.** To maintain the full effectiveness of this helmet, there should be no alteration to the structure of this helmet or its component parts. Paints and adhesives may damage and render your helmet ineffective, without the damage being visible to the user.

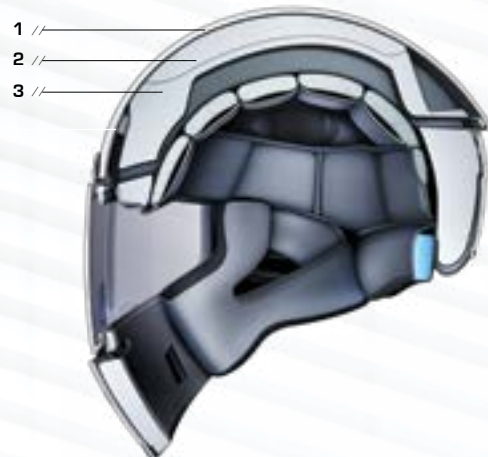
## SHELL & EPS

The injection-molded polycarbonate PC-ABS shell of the ICON® AIRFORM™ helmet is manufactured under some of the most stringent quality control standards available on the market today.

The ICON® AIRFORM's dual-density Expanded-Polystyrene liners are engineered to offer impact absorption and force dissipation.

Additionally, both liners are channeled with an extensive series of directional air ducts to distribute airflow from the outer ventilation system.

- 1 // POLYCARBONATE SHELL
- 2 // EPS DENSITY 2
- 3 // EPS DENSITY 1

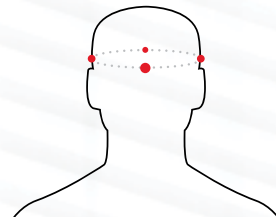


## CHOOSING THE CORRECT HELMET SIZE

Helmet fit is critical to helmet protective performance. Different helmets fit differently due to differences in design and construction. The correct helmet size can only be checked and confirmed by physically fitting the helmet to the user. Always try the helmet on in a store, before purchasing it, to be sure you are purchasing the correct sized helmet for you.

1. Wrap flexible tape measure approximately one inch above eyebrows and ears.
2. Use this measurement to find your "inches" or "centimeters" head size in our helmet sizing chart.

**SAFETY WARNING:** Never buy a used helmet or borrow someone else's helmet. Over time the protective foam in helmets will adjust to the contours of a user's head. A used or borrowed helmet may not offer as much protection as a new helmet. Wearing the wrong size helmet can increase your risk of serious injury or death in an accident. A helmet that is too large for your head may be dislodged or knocked off in an accident. To select the right size helmet for your head, follow these instructions.



### HEAD MEASUREMENT

**WARNING:** For adequate protection, this helmet must fit snugly and be securely attached.

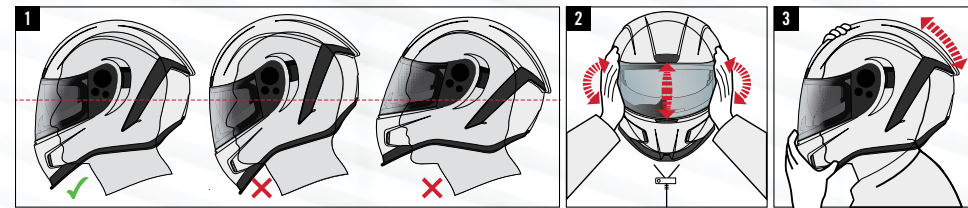
### HELMET SIZING CHART

SHELL	XS	S	M	L	XL	2XL	3XL
HAT SIZE	6 <sup>5</sup> / <sub>8</sub> - 6 <sup>3</sup> / <sub>4</sub>	6 <sup>7</sup> / <sub>8</sub> - 7	7 <sup>1</sup> / <sub>8</sub> - 7 <sup>1</sup> / <sub>4</sub>	7 <sup>3</sup> / <sub>8</sub> - 7 <sup>1</sup> / <sub>2</sub>	7 <sup>5</sup> / <sub>8</sub> - 7 <sup>3</sup> / <sub>4</sub>	7 <sup>7</sup> / <sub>8</sub> - 8	8 <sup>1</sup> / <sub>8</sub> - 8 <sup>1</sup> / <sub>4</sub>
INCHES	20 <sup>7</sup> / <sub>8</sub> - 21 <sup>1</sup> / <sub>4</sub>	21 <sup>5</sup> / <sub>8</sub> - 22	22 <sup>3</sup> / <sub>8</sub> - 22 <sup>3</sup> / <sub>4</sub>	23 <sup>1</sup> / <sub>8</sub> - 23 <sup>1</sup> / <sub>2</sub>	24 - 24 <sup>3</sup> / <sub>8</sub>	24 <sup>3</sup> / <sub>4</sub> - 25 <sup>1</sup> / <sub>8</sub>	25 <sup>1</sup> / <sub>2</sub> - 26
CENTIMETERS	53-54	55-56	57-58	59-60	61-62	63-64	65-66

**SAFETY WARNING:** The helmet size chart is only for reference. Always try the helmet on and follow this manual's instruction for proper fitting. If you are unable to find a size of this helmet style that fits you properly, please try another certified helmet style.

## PROPER FITTING

No helmet can protect the user against all foreseeable impacts. For your safety, please choose a helmet in the correct size for your head (refer to the helmet size chart previous page). For maximum head protection, your helmet must also fit properly and the retention system must be securely fastened under the chin.



To check and ensure a proper fit, please follow the steps below:

1. Position the helmet on your head so that it sits low on your forehead. If you can't see the edge of the brim at the extreme upper range of your vision, the helmet is probably out of place. Adjust the retention system so that, when in use, it will hold the helmet firmly in place. **Always make sure you can see well enough to safely operate your motorcycle.**
2. With the chinstrap still fastened as tightly as possible, take hold of the helmet with both hands. Without moving your head, try to move the helmet up and down, and from side to side. You should feel the skin of your head and face being pulled as you try to move the helmet. If you can move the helmet around easily, it is too big. Try a smaller size.
3. Now, with the chinstrap secured, put your hands flat on the back of the helmet and try to pull the helmet off by rotating it forward. Then, put your hands on the front of the helmet, and try to push the helmet off by rotating it toward the rear. If the helmet starts to come off in either direction, the helmet is either too large, or the chinstrap is not fastened tightly enough. **If helmet comes off, try another size or another model.**

Please note that the face shield is adjustable. Try the helmet with the face shield in all positions, prior to purchase, to make sure that the helmet meets your requirements and that the face shield does not interfere with your vision when in the open position. These steps should be repeated until you are able to find the right size helmet for you.

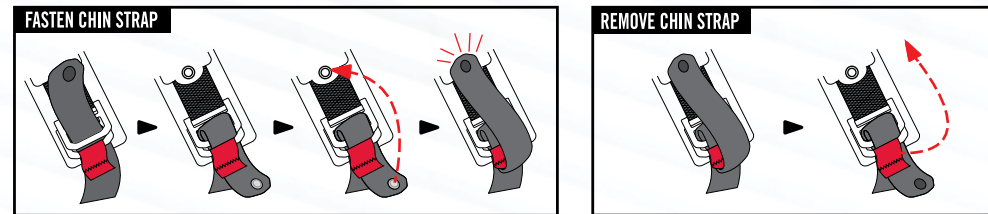
## CHINSTRAP

In order for your helmet to function properly, the chinstrap must always be securely fastened while in use. With the chinstrap fastened, it should not be possible to remove the helmet from your head by pulling up at the center rear. Check periodically to see that the vibration has not caused the chinstrap to loosen. Just give a little tug to make sure it is still tight.

To securely fasten the D-ring retention system, thread the end of the chinstrap through the D-rings only as shown in the diagram below. Pull on the loose end of the strap until the chinstrap is tight under your chin. Fasten the female snap of the chinstrap to the male snap to secure the loose end of the chinstrap after the chinstrap is securely fastened and tightened. The only function of the snap fastener on the end of the chinstrap is to keep it from flapping in the air stream. It is not part of the retention system and should not be used independently without passing the chinstrap through the D-rings and then tightening the chinstrap as illustrated below.

To release the D-ring retention system, unsnap the loose end of the chinstrap from its fastener. Then pull on the red flag attached to the end of the lower D-ring to loosen the strap. Once loose, feed the end of the strap back through the D-rings to fully release the chinstrap.

**PLEASE MAKE SURE THAT THE CHINSTRAP IS FASTENED AS INSTRUCTED ABOVE. FAILURE TO DO SO MAY RESULT IN FATAL INJURY.**



**SAFETY WARNING:** Do not rely on the snap to secure the helmet. The snap is provided only to prevent the strap from flapping in the air. Fasten the retention system only as shown in this illustration.

## USING YOUR HELMET CORRECTLY

**[SAFETY WARNING]:** To reduce the risk of serious injury or death, always use your helmet correctly.

- Never adjust your helmet or helmet accessories while riding – Only make helmet adjustments when stopped.
- Never drop your helmet – Dropping your helmet may crack the shell or damage the protective foam. The damage may not be visible. Your helmet is only designed for ONE impact. Refer to “REPLACEMENT RECOMMENDATION” for more information.
- Never wear anything between your head and your helmet – This may reduce the effectiveness of your helmet.
- Never hang or hook your helmet on anything including mirror stalks, handlebars, or sissy bars – Doing so may cause damage to the helmet protective foam or liner.
- Never use insect repellent on or around your helmet – Insect repellent may damage your helmet’s visor, shell, protective foam, or other components.
- Never expose helmet to gasoline or gasoline fumes – Gasoline may damage your helmet’s visor, shell, protective foam, or other components.

## INSPECTING YOUR HELMET BEFORE EVERY USE

**[SAFETY WARNING]:** To reduce the risk of serious injury or death and to help prevent damage to your helmet:

- Check the shield and shield ratchet – retighten shield ratchet screws if necessary. Be sure not to over-tighten any screws. Plastic base plate screws can break and aluminum screws can strip the screw sleeves if over-tightened.
- Check for helmet damage. If your helmet is damaged or cracked, stop using it immediately. See “REPLACEMENT RECOMMENDATION” section for further information. If your helmet has been dropped, you may not be able to see the damage.
- Check for worn or damaged parts. Plastic components may wear out over time. If you find worn or damaged parts, replace them or purchase a new helmet. For a complete listing of helmet replacement parts and accessories including liners, cheek-pads, side-plates, breath deflectors, etc. visit us at [WWW.RIDEICON.COM](http://WWW.RIDEICON.COM)
- Make sure that the liner and cheek pads are properly in place and that the chinstrap system is secured.

# AIRFORM™ FACE SHIELDS

**ICON OPTICS™+**  
DISTORTION FREE FACE SHIELD

The ICON AIRFORM™ is equipped with a clear ICON OPTICS™ face shield, providing you with a clear and distortion-free line of sight.

The clear ICON OPTICS™ shield supplied with this helmet meets Regulation VESC-8. Accessory shields with the marking indicating "daytime use only" are not suitable for use during the hours of darkness or in conditions of poor visibility. Make sure the face shield is always in perfect condition.

**DROP SHIELD**

Instead of carrying extra ICON OPTICS™ for changing light conditions, with the flip of a switch, engage the tinted DropShield™ hidden within the helmet.

Tinted DropShields™ should not be used during hours of low light; instead swap out for a Yellow face shield or just use the Clear ICON OPTICS™ shield. The DropShield™ must only be used while the main face shield is in the fully closed position.

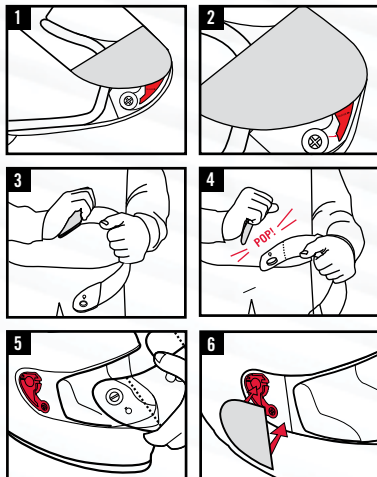
To order replacement face shields in a variety of colors, visit your local dealer or [www.rideicon.com](http://www.rideicon.com).

**SAFETY WARNING:** Your AIRFORM™ is originally supplied with a Clear ICON OPTICS™ shield and tinted DropShield™. Under no circumstances should a rider use a tinted DropShield™ while a tinted ICON OPTICS™ is attached. Duplicated tinted face shields will limit your vision.



## ICON OPTICS™ SHIELD CHANGE AND REMOVAL

1. To remove the shield, open the shield completely.
2. Push both locking levers to the open position towards the rear of the helmet and remove the shield from the gear plates.
3. Once removed, brace the shield with one hand, and use the other hand to pull the side plates from the straight, long edge (the front of the side plates).
4. Pull each side plate until they pop free from the shield.
5. To replace shield, align the tabs on the shield with holes on the gear plates and press in until secure.
6. To replace the side plates, align tabs on side plate with holes in shield, and snap it into place. Repeat for adjacent side plate.
7. Test out the opening and closing function of your shield before riding.



This helmet is unsuitable for use with goggles.

**SAFETY WARNING:** Do not ride without the sideplates attached. If the shield is opened during riding use without sideplates the force of air against the open shield may cause the shield to disengage from the helmet.

## DROPSHIELD™ CHANGE & REMOVAL

### REMOVAL:

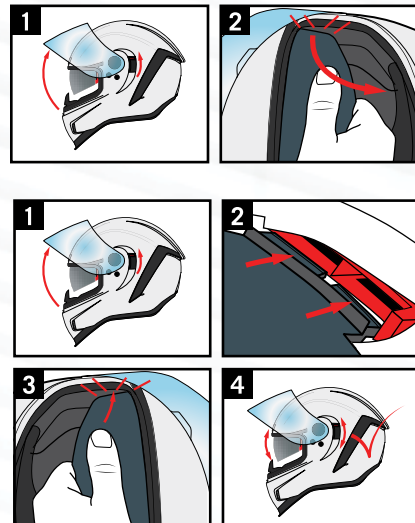
1. Open the ICON OPTICS™ shield and lower the Drop-Shield™
2. While firmly holding the helmet, pull the Drop-Shield™ forward and down until two clicks are heard and the shield is free from both side clips.

### INSTALLATION:

1. Begin by placing the Drop-Shield™ Switch in the DOWN Position.
2. Start with the SWITCH side of the Drop-Shield™. Align the tabs with the clips for the internal mechanism and push firmly on the lens until you hear a “CLICK” sound.
3. Repeat the process with the opposite side of the Drop-Shield™.
4. Once installed, operate the Drop-Shield™ Switch to ensure proper installation, and clean the Drop-Shield™ with an ICON Lens wipe or microfiber cloth.

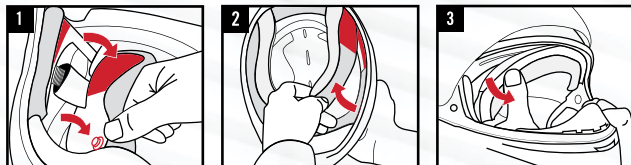
Some users may find it easier to change the Drop-Shield™ with the ICON OPTICS™ shield and Breath Deflector removed. If the ICON OPTICS™ shield was removed for Drop-Shield™ replacement, ensure the ICON OPTICS™ shield has been re-installed correctly before riding. The Drop-Shield™ is not designed to be used without the ICON OPTICS™ shield.

**SAFETY WARNING:** Incorrect installation of the Drop-Shield™ may adversely affect its performance and may affect the riders vision and ability to control the motorcycle.



## COMFORT LINER REMOVAL AND REASSEMBLY

How to remove your interior for cleaning or replacement:

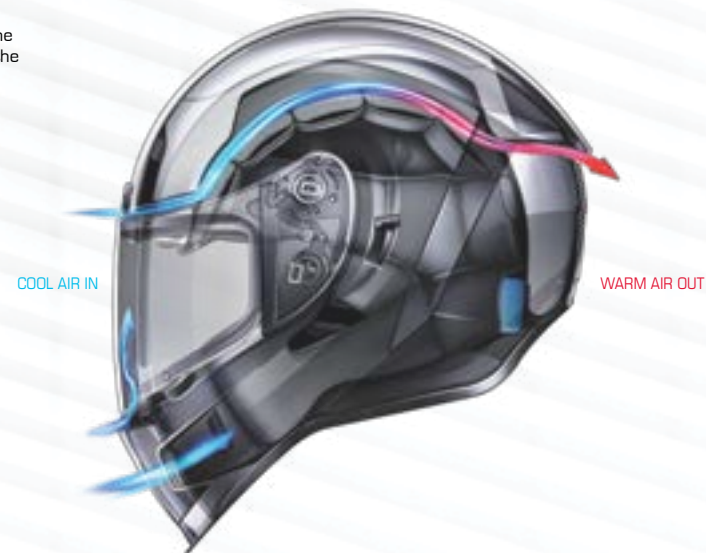
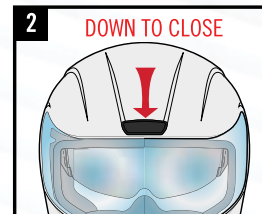
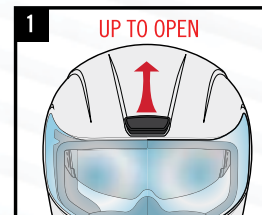


1. With the helmet upside down and with the chin bar facing away from you release each cheekpad from the helmet by pulling inward, freeing it from the snap and velcro system.
2. Turn the helmet until the chin bar faces toward you then pull each cheekpad towards you, removing the cheekpads from the helmet. Note how the chin straps thread through the cheekpads and how the cheekpad plate slips between the helmet shell and EPS liner for reassembly.
3. Remove your comfort liner by releasing it from the two snap system on the back of the helmet. Then remove the crown comfort liner attachment point, taking note of how the crown plate attachment slips into place between the shell and EPS liner.
4. Reverse these steps to reinstall the comfort liner and cheekpads.

**SAFETY WARNING:** The liner is essential to the intended performance of the helmet, it must be properly installed when using the helmet.

## VENTING SYSTEM

To activate the forehead vents, slide the vents open by pushing them towards the rear.





## CARE AND CLEANING

Let's face it, Icon® helmets look cool and you want to keep them that way. We've found the following methods work really well to keep our helmets looking sharp and ready to roll. Remember, never use gas, pre-mix, carb cleaner, brake cleaner or any other random unlabeled spray can lying around the garage. Chemicals and harsh solvents can break down the materials in your helmet; it's like using brake cleaner to polish your plastics—don't do it!

### INTERIOR CLEANING

1. Remove interior lining as shown in the section of this info notice titled "Comfort Liner Removal and Reassembly".
2. Soak your interior in a mild solution of baby shampoo.
3. Rinse in clean water several times until all soap is gone.
4. Let interior air dry and replace accordingly.

\* **Never machine wash or dry your helmet interior.**

### SHIELD CLEANING

Your helmet is equipped with a scratch resistant fog free shield. **Common household cleaners such as glass cleaners, surface cleaners, and furniture polishes, can leave behind unwanted residues, or in some extreme cases damage the shield itself. Use no cleaners or detergents on the inside of your shield.** Using anything other than a clean soft cloth, micro fiber cloth, or the bag supplied with your helmet, will ruin or reduce the effectiveness of the fog free coating.

It is our recommendation the same steps outlined for cleaning the exterior of your helmet should be applied to cleaning the exterior of your shield.

### STORAGE

It is a good idea to protect your helmet if it is stored for a period of time. Store your helmet inside the helmet bag we have provided in a secure, dry place out of direct exposure to sunlight.

### EXTERIOR CLEANING (GLOSS HELMETS)

1. Lay a warm, wet, cloth towel on the exterior of the helmet for at least 5 minutes to soften dried on bugs. (Don't skip this step!)
2. Using a fresh, wet, clean cloth and mild dish soap wipe down the exterior to get rid of road grime and softened bug guts.
3. Use another fresh dry cloth towel to dry the helmet and get rid of any water spots.

### EXTERIOR CLEANING (RUBATONE™ HELMETS)

1. Lay a warm, wet, cloth towel on the exterior of the helmet for at least 5 minutes to soften dried on bugs.
2. Remove the now softened bugs and road grime with a light blotting action. For this use the soft part of your helmet bag provided or a clean microfiber cloth.

\* **Never rub aggressively with anything on the Rubatone™ or you can ruin the finish.**

### EXTERIOR POLISHING

1. For gloss helmet finishes, use spray automotive wax that is specifically designed for cars with a clear coat. (Available at any automotive store.)
2. For matte finishes, you know better than to polish a matte finish don't you?

## ADVISORY

**ONE IMPACT RULE - ANY HELMET THAT HAS SUSTAINED AN IMPACT SHOULD BE REPLACED.** Helmets are designed to absorb only one impact. The helmet is designed to absorb some shock by partial destruction of the shell and liner. After your helmet has endured any impact, the impact absorption liner portion of your helmet will have dispersed the energy from that impact, thus rendering the liner compacted and, therefore, compromised. This damage may not be visible. Even if there is no VISIBLE damage to the shell, the helmet's usefulness is expired after one impact. A helmet that has experienced an impact should be destroyed and replaced, even if it is apparently undamaged.

**HEARING:** Wearing any helmet reduces the wearer's ability to hear. A wearer needs to be aware of this audible reduction and their surroundings. Not being aware this audible reduction may lead to an accident that could result in injury or death.

**OBSOLESCENCE AND HELMET DISPOSAL:** A helmet has a limited lifespan in use and should be replaced when it shows obvious signs of wear, e.g. change of fit, cracks, rust or fraying or other signs of normal "wear and tear" that can contribute to helmet degradation.

**REPLACEMENT RECOMMENDATION:** The five-year helmet replacement recommendation is based on a consensus of the majority of helmet manufacturers. Glues, resins and other materials used in helmet production can affect liner materials over time. Hair oils, body fluids and cosmetics, as well as normal "wear and tear" also contribute to helmet liner degradation. Additionally, petroleum-based products present in cleaners, paints, fuels, and other commonly encountered materials may break down materials used in the construction of many helmets, possibly compromising performance. Experience indicates that helmet standards are revised every five years. This, coupled with advances in materials, designs and production methods suggest that it is in the rider's best interest to replace his/her every five years at a minimum. If you buy a new helmet, destroy the old one to ensure it cannot be reused. Do not sell or give away your old helmet, even if it has not been damaged. Over time, the protective layer in the helmet will adjust to the contours of your head. If someone else uses this helmet it will not provide him or her with as much protection.

**WAIVER AND RELEASE BY OWNER:** No personal protective equipment is able to safeguard against all injuries in the event of an accident or fall from a motorcycle. No personal protective equipment can offer complete protection against impact or abrasion as a result of an accident or fall from a motorcycle. Motorcycling is inherently dangerous in nature and use of this helmet cannot prevent injury or death. Even a low speed accident may result in serious injury or death. When using this helmet, the user assumes all risk associated with this activity, which may cause injury or death. The user hereby waives all claims against Icon® Motosports (a division of Lemans Corporation), Lemans Corporation and J-TECH Corp. for death or injury to his or her person and hereby covenants to not sue for any claims arising as a result of injury or death while using Icon Motosports products.

