

# HONDA

## INSTALLATION INSTRUCTIONS

Accessory

ENDURO FOOTPEGS  
P/N 08R79-MKS-E00

Application

CRF1100A/A4/D/D4

Publication No.

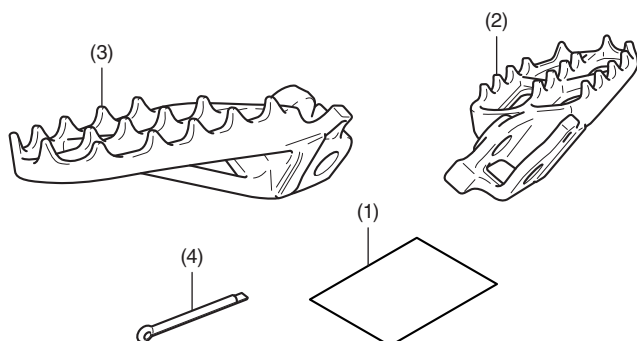
MII 17351

Issue Date

February 2020

**Honda Dealer: Please give a copy of these instructions to your customer.**

### PARTS LIST



No.	Description	Qty
(1)	Installation Instruction URL	1
(2)	Right enduro footpeg arm	1
(3)	Left enduro footpeg arm	1
(4)	Split pin	2

### SUPPLIES REQUIRED

Long nose pliers

Grease

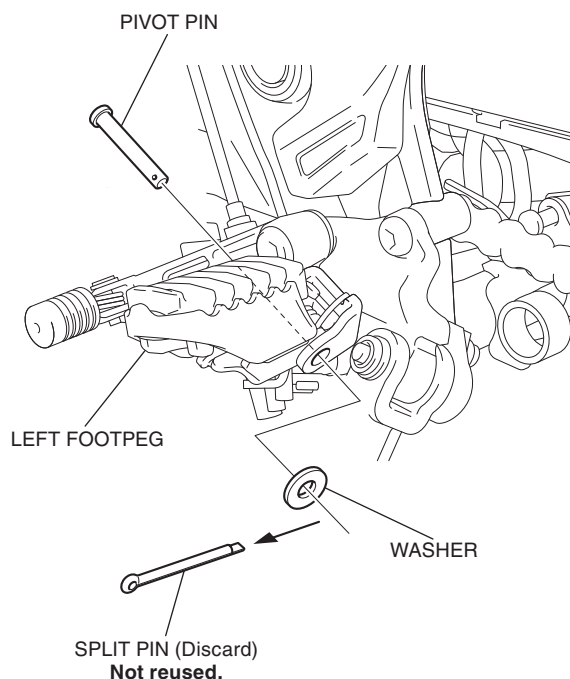
### INSTALLATION

#### ▲ CAUTION

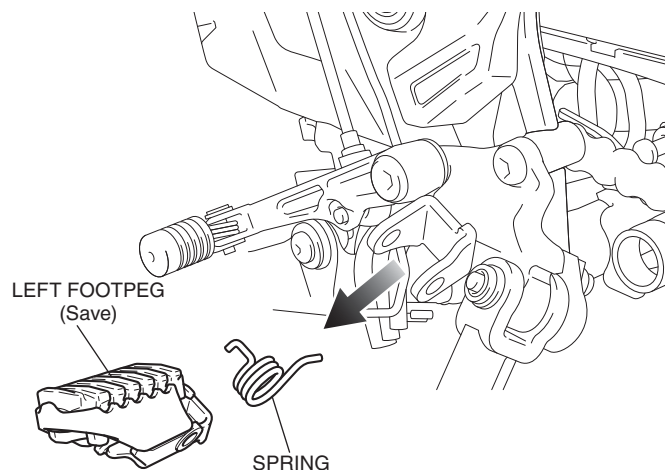
- To prevent burns, allow the engine, exhaust system, radiator, etc., to cool before installing the accessory.

1. Remove the split pin and pivot pin.

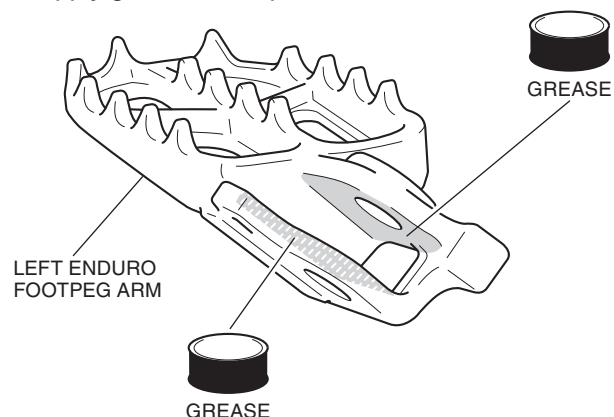
<Left side>



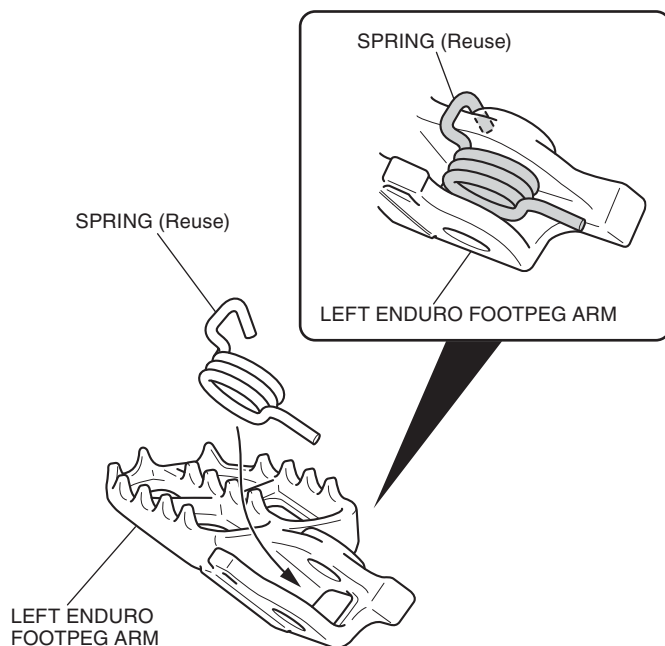
2. Remove the left footpeg as shown.



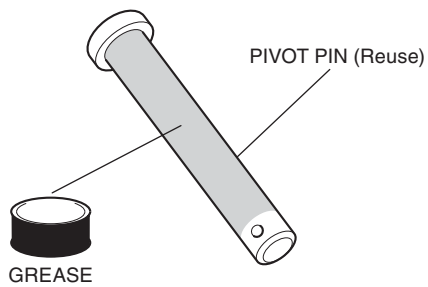
3. Apply grease to the positions shown.



4. Install the spring as shown.

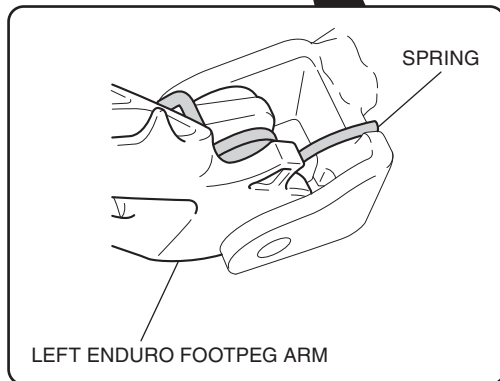
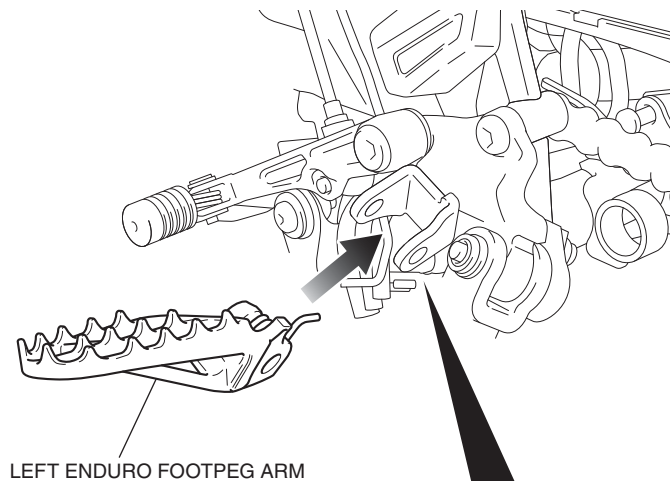


5. Apply grease to the pivot pin as shown.

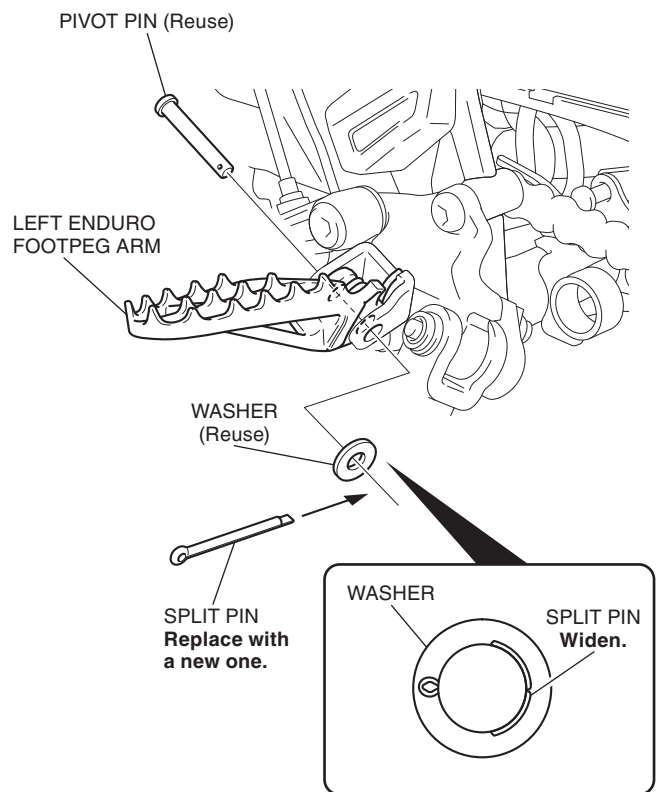


6. Install the left enduro footpeg arm as shown.

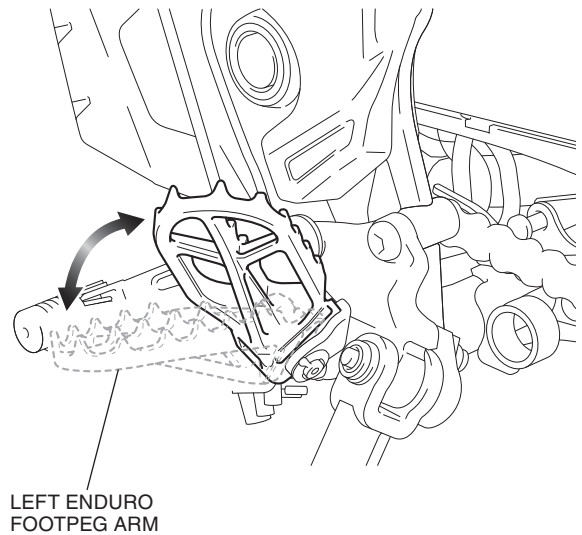
<Left side>



7. Install the pivot pin and split pin as shown.



8. Check that the left enduro footpeg arm operates smoothly.



9. Install the right enduro footpeg arm in the same manner as the left side.