



AltRider Crash Upper Bars for BMW R 1200/ R1250 GSW 2017+ INSTALLATION INSTRUCTIONS

The most up to date instructions can be downloaded from the product page at altrider.com, under the instructions tab.

Dear Rider,
Thank you for choosing AltRider! Whether a seasoned world adventurer or a first time ADV-Newbie, we welcome you to the AltRider experience. You can install your new product with the utmost confidence. AltRider designs, tests, and manufactures all of its products here in the United States. We are proud to do what we do, and honored to present to you the product of our labors.

Enjoy it, show it off, and most of all, RIDE IT!

Venture On,
Jeremy LeBreton



BMW R1200 / R1250 GSW 2017+ Upper Crash Bars

Package Contents:
- Crash Bars
- Hardware Kit
- Instructions

AltRider LLC

Global

mailing: 4000 Aurora Ave N Ste 100
Seattle, WA 98103 USA
phone: 206-922-3618
email: info@altrider.com
web: www.altrider.com

Europe

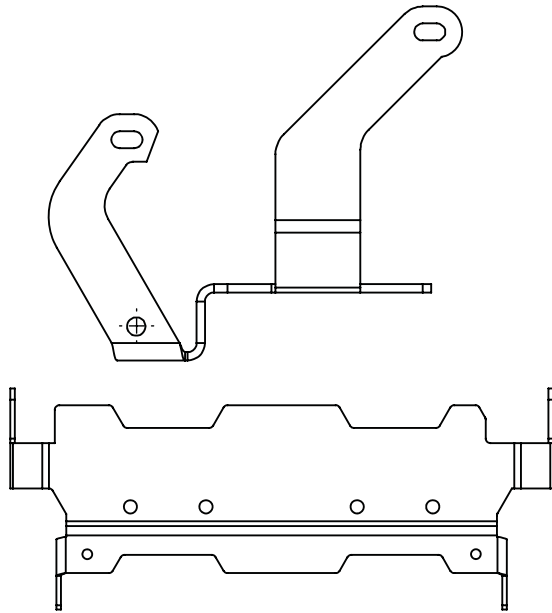
mailing: Spectrumlaan 31
2665 NM Bleiswijk
The Netherlands
email: info@altrider.eu
web: www.altrider.eu



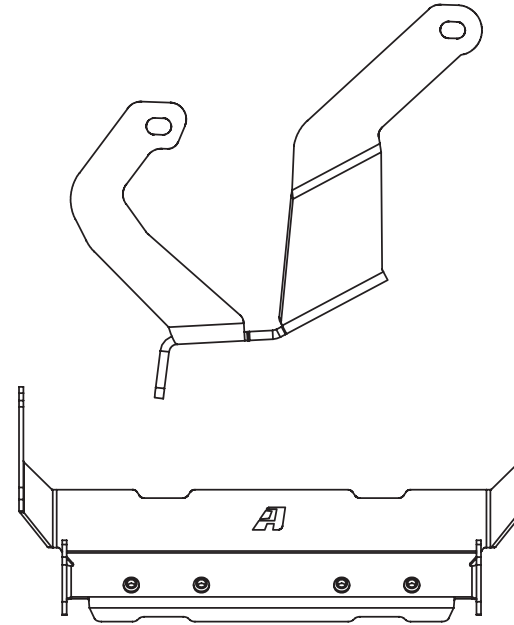
MADE IN THE USA
R118-X-1001-INST REV 1



NOTE: The installation process for the upper crash bar is the same between the R1200 and R1250, however, the upper brackets have a subtle difference, shown below.

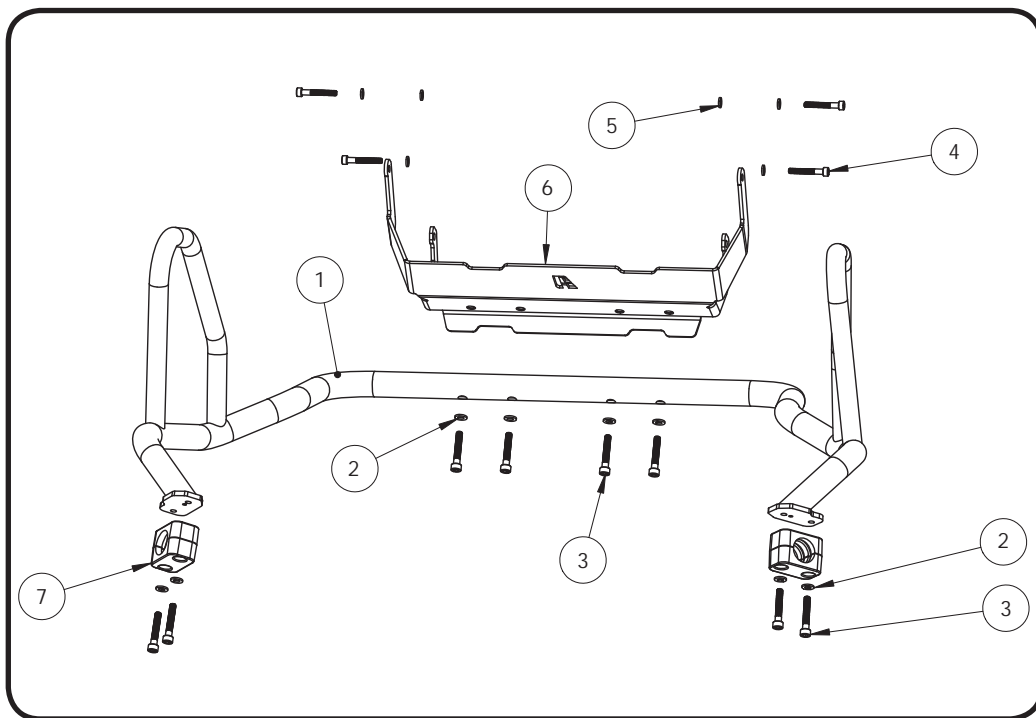


R1250 Upper Crash bar bracket without AltRider Logo cut out.



R1200 Upper Crash bar bracket 2017+, and has an AltRider logo cut out.





Kit:

- ① Upper crash bars
- ② (8) M6 washers
- ③ (8) M6 x 35mm screws
- ④ (4) M5 x 35mm screws
- ⑤ (6) M5 washers
- ⑥ Upper bracket
- ⑦ (2) aluminum clamps



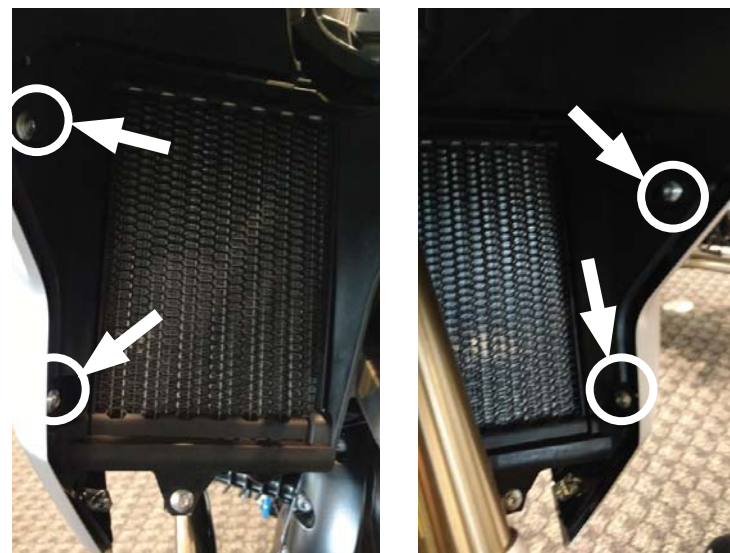
Recommended tools:

- ① hardware tray
- ② 1/4" ratchet / 1/4" extension
- ③ M5 allen driver
- ④ T25 driver
- ⑤ Thread locker
- ⑥ torque wrench
- ⑦ M4 allen driver





- ① Using T25 driver, remove four (4) screws holding the side panels in place, (two fasteners on each side) where indicated. Note: pay close attention to where each fastener comes from, some are different lengths.



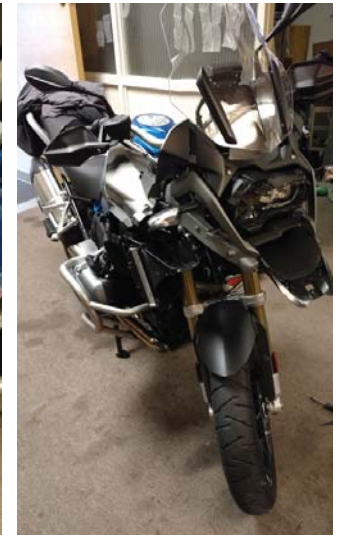
- ② Using T25 driver remove the (4) screws holding radiator shrouds in place, (2) on each side. Remove each side panel, take care with clips and note how the panels fit together for reinstallation.



- ③ Remove the four (4) screws (two each side) at the rear of the beak plastic. (A) One on top near the tank, (B) one on the side just under the edge. (Left side of bike only shown in the pics above)



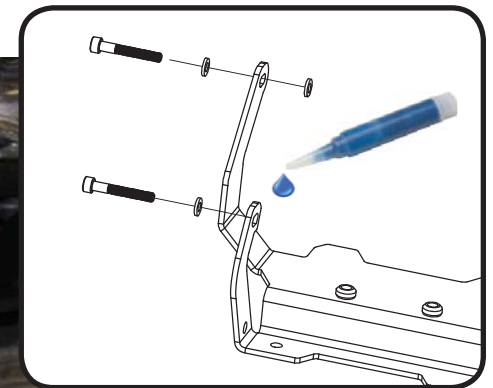
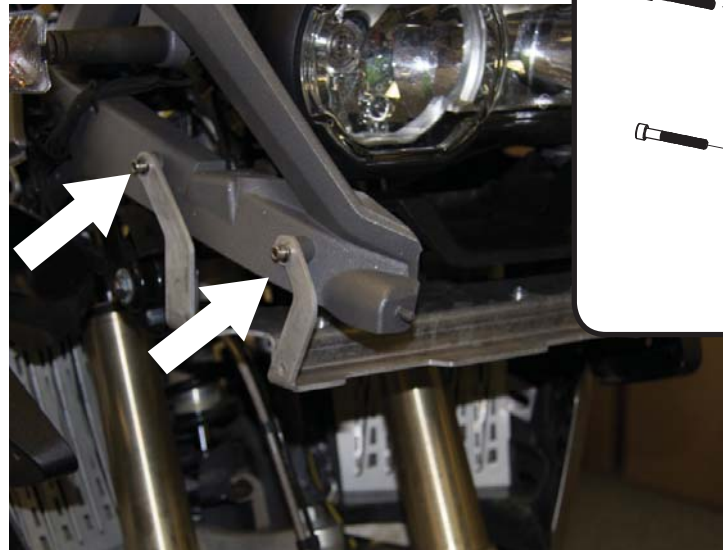
- ④ Remove the two (2) fasteners just under the front edge of the beak.



- ⑤ Gently pull the beak forward to remove it. Note rubber grommets and other mounting points for reinstallation.



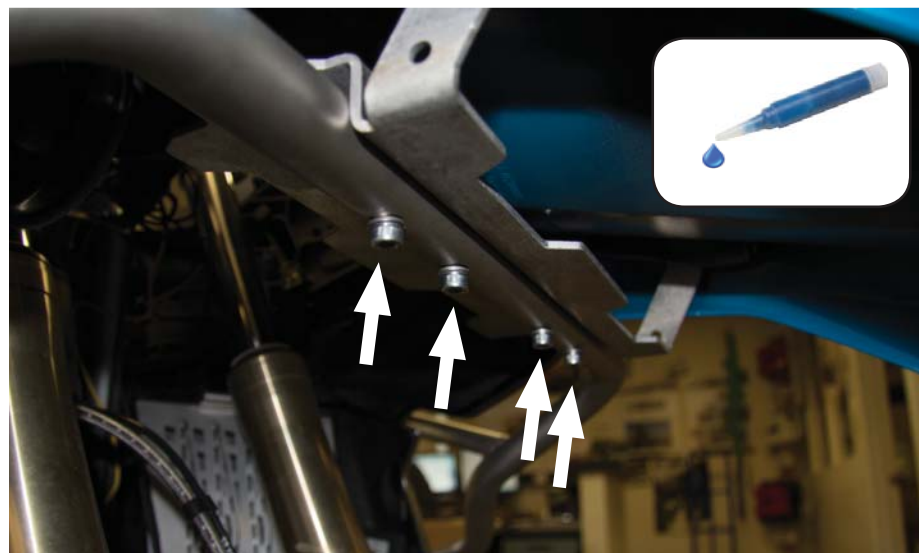
- ⑥ Remove (4) total OEM M5 screws from the front sub frame (2) on each side. Set them aside as you will not need them to complete this installation.



- ⑦ Install the upper bracket using an M4 driver and (4) M5 x 35mm bolts and (6) M5 washers; TAKE NOTE OF WASHER PLACEMENT BY REFERRING TO THE ABOVE DIAGRAM. Apply thread locker to the fasteners. Completely tighten each fastener and torque to 10 nm.



- ⑧ Reinstall the beak and side plastics (reverse steps 1-5)

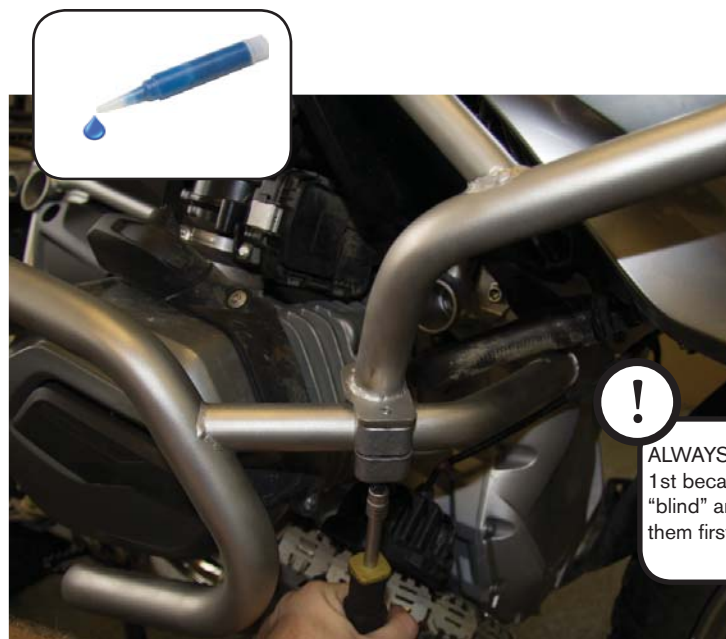


- ⑨ Hold your upper bars in place while you start threading the (4) M6 x 35 mm fasteners and washers. Add thread locker to each fastener, do not tighten all the way. (Bracket may differ slightly from picture depending on model).

- ⑩ Assemble each clamp. Add a drop of thread locker to the last few threads of each M6 screw.

Place the top section of the clamp in between the upper and lower bars. Next mate the bottom section of the clamp against the top and start threading the rear two (2) M6 x 35mm bolts and washers. Then move to the front two (2)

NOTE: bars may not line up dead center with holes in clamps. If this happens simply leverage on the bar so it lines up properly before starting the threads to avoid cross-threading. Once all (4) bolts are started, torque them to 10 nm in a criss-cross pattern providing equal compression.



! ALWAYS start rear bolts 1st because they are "blind" and accessing them first is the easiest.

CONGRATULATIONS!

**You've completed your installation.
If at any point you have questions about
your installation or have any feed back
for us, we'd love to hear it.**

**A downloadable version of these
instructions can be found at our web
site. www.AltRider.com**

**After 5 hours of riding, or 100 miles,
check all the fasteners on the assembly
to ensure they are tightened to spec.**

Global Office:

email: info@AltRider.com
phone: +1 206-922-3618
address: 4000 Aurora Ave N
Ste 100
Seattle, WA 98103

Europe Office:

mailing: Spectrumlaan 31
2665 NM Bleiswijk
The Netherlands
email: info@altrider.eu
web: www.altrider.eu

TERMS OF USE, WARRANTY AND LIABILITY WAIVER

AltRider LLC, a Washington company, having its principal place of business in Seattle, WA ("AltRider") offers its motorcycle accessories (the "Product") with the terms, conditions and notices as follows:

Terms of Use

This Product is offered to you conditioned upon your acceptance without modification of the terms, conditions, and notices contained herein. Installation and/or use of this product implies acceptance of all such terms, conditions, and notices. If you do not agree to these terms, do not buy the Product. If you have already bought the Product and do not agree to these terms, return this Product promptly including the packaging and all written materials, to AltRider.

Limitation of Liability and Warranty Disclaimer

You may return your merchandise for a full refund or exchange, less any original or return shipping fees under these conditions:

1. Only if the merchandise is in 100% factory condition. Original manufacturer's packaging and same condition as sold – original boxes, packaging material, instructions, documentation, parts, and attached tags.

2. Only unused, unscratched, uninstalled, undamaged merchandise will be accepted. Do not install equipment until you are sure you want to keep it. Package items carefully in protective materials before returning them. Never ship an item in its original manufacturers packaging – it will arrive damaged. Please use a postal box or other adequate packaging to ensure your return or exchange is not damaged on the way back to AltRider.com.

To read more about our exchanges and returns policy, on the web, navigate to <http://www.altrider.com/info/exchangesAndReturns>

Excepting the warranties stated in the preceding paragraph, AltRider hereby disclaims all other warranties and conditions with regard to the Product including all implied warranties and conditions of merchantability and fitness for a particular purpose. There are no warranties which extend beyond the description on the face hereof. AltRider does not warrant against damages or defects arising out of use or installation of the Product. Installation instructions are provided for your convenience. AltRider is not responsible for any damages arising out of the installation, improper or otherwise, of the Product. No warranty of any kind, expressed or implied, is made regarding the safety of this Product.

To the extent allowed by law, AltRider shall not be held liable for any direct, indirect, punitive, incidental, special or consequential damages arising out of, or connected with, the use or misuse of this Product. Buyer assumes all risks and liability arising from use of this Product.

Entire Agreement

This document states the entire obligation of AltRider with respect to the Product. If any part of this agreement is determined to be void, invalid, unenforceable or illegal, including, but not limited to the warranty disclaimers and liability limitations set forth above, then the remainder of the agreement shall remain in full force and effect.

Applicable Law

This agreement is governed by the laws of Washington, USA. You hereby consent to the exclusive jurisdiction and venue of the courts of Washington, USA, in all disputes arising out of or relating to the use of this product.

