

Assembly Instructions

Model:	EN650C/D/E
Description:	Cafe Deflector
Part Number:	99994-0826
Flat Rate Time(Hr):	0.2

Before you begin, read through these instructions and check that all parts are present. Please note that Kawasaki cannot assume any responsibility for damage resulting from incorrect installation. Kawasaki recommends that all genuine accessories should be fitted by an authorized Kawasaki dealer.

The following symbols indicate the information for proper installation and operation in this instruction.

NOTE : *NOTE indicates information that may help or guide you in the operation or service of the vehicle.*

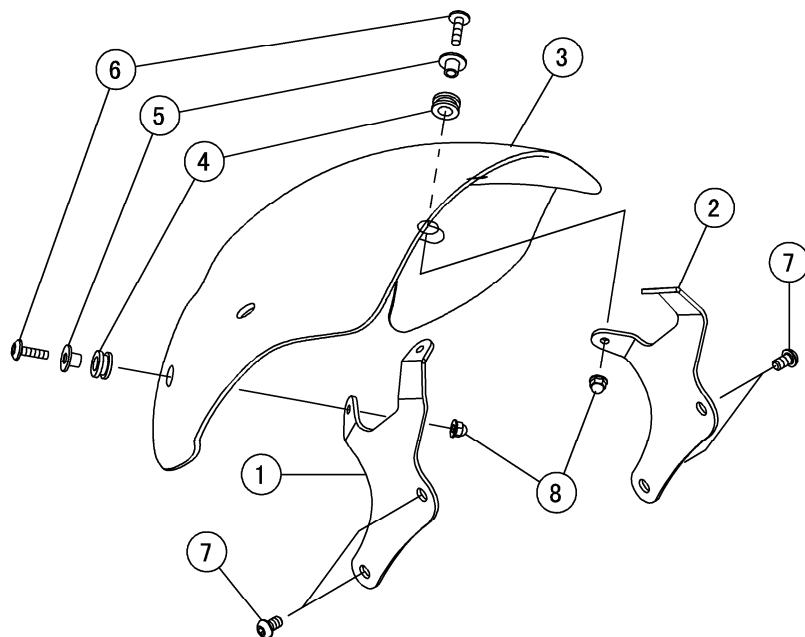
- Indicates a procedural step or work to be done.
- Indicates a procedural sub-step or how to do the work of the procedural step it follows. It also precedes the text of a NOTE.

Refer to the Service Manual (P/No.: 99924-1515-01) for detailed procedures.

NOTE

- *This kit cannot install if the windshield bracket (Front Fork) kit is not installed, therefore install the windshield bracket (Front Fork) kit (see Windshield Bracket (Front Fork) Kit (P/No.:99994-0824) for Assembly Instructions Manual).*

Parts List				
No.	Component Name	Part No.	Qty	Remark
1	Bracket	11057-0220	1	Left
2	Bracket	11057-0221	1	Right
3	Deflector	59254-0005	1	
4	Grommet	92071-0759	4	
5	Collar	92152-2251	4	
6	Bolt	92154-0787	4	M6 × 22 mm (0.9 in.)
7	Bolt	92154-1032	4	M8 × 14 mm (0.6 in.)
8	Nut	92210-0322	4	



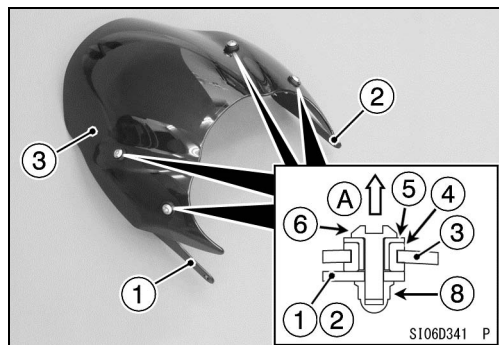
S106629CW2 C

Installation Instructions

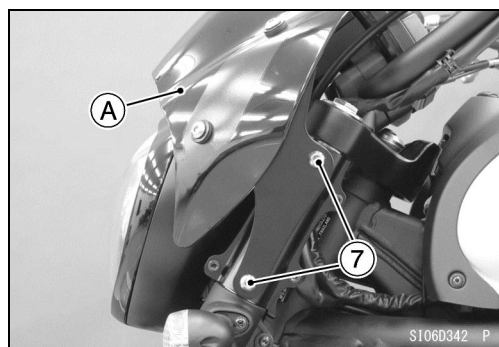
- Install:

- Deflector [3]
- Grommets [4]
- Collars [5]
- Bolts [6]
- Brackets [1] [2]
- Nuts [8]

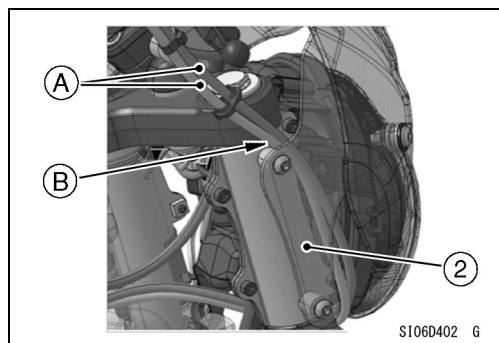
- Install the grommet with its thinner side facing to the outside [A].



- Install the deflector assembly [A] and temporary tighten the bolts [7].

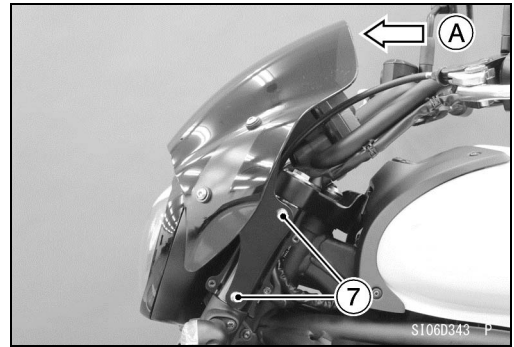


- Run the throttle cables [A] inside [B] the bracket [2].



Installation Instructions

- Tighten the bolts [7] at both sides while pushing the top [A] of the deflector forward.
- Tighten the upper bolts first.



Basic Torque for General Fasteners

The tables below, relating tightening torque to thread diameter, lists the basic torque for the bolts, nuts and screws. Use these tables for the bolts, nuts and screws which are not specified the tightening torque particularly on the previous pages. All of the values are for use with dry solvent-cleaned threads.

For Bolts and Nuts

Threads dia. (mm)	Torque		
	N·m	kgf·m	ft·lb
5	4.5	0.46	40 in·lb
6	8.0	0.82	71 in·lb
8	20	2.0	15
10	35	3.6	26
12	60	6.1	44

For Screws, Plastic Part Tightening Portions and Plastic Washer Tightening Portions

Threads dia. (mm)	Torque		
	N·m	kgf·m	ft·lb
4	1.2	0.12	11 in·lb
5	3.0	0.31	27 in·lb
6	4.0	0.41	35 in·lb

Check tightness of all fasteners in regular interval. Retighten loose fasteners.