

Assembly Instructions

Model:	ZR900A/B
Description:	Slider
Part Number:	99994-0836
Flat Rate Time(Hr):	0.3

Before you begin, read through these instructions and check that all parts are present. Please note that Kawasaki cannot assume any responsibility for damage resulting from incorrect installation.

Kawasaki recommends that all genuine accessories should be fitted by an authorized Kawasaki dealer.

The following symbols indicate the information for proper installation and operation in this instruction.

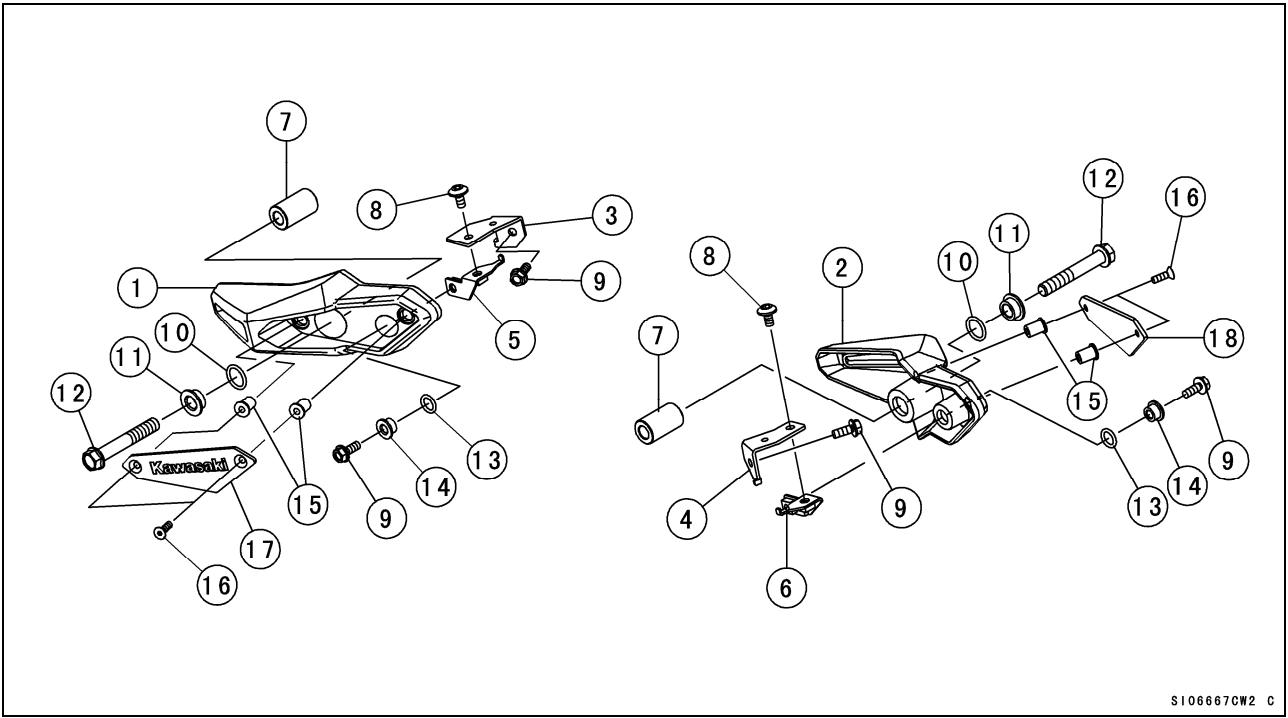
NOTE : *NOTE indicates information that may help or guide you in the operation or service of the vehicle.*

● Indicates a procedural step or work to be done.

○ Indicates a procedural sub-step or how to do the work of the procedural step it follows. It also precedes the text of a NOTE.

Refer to the Service Manual (P/No.: 99924-1525-01) for detailed procedures.

Parts List				
No.	Component Name	Part No.	Qty	Remark
1	Pad	39156-2123	1	Left
2	Pad	39156-2124	1	Right
3	Bracket	11057-0313	1	Left, "ACC-0105" Mark
4	Bracket	11057-0314	1	Right
5	Bracket	11057-0778	1	Left
6	Bracket	11057-0779	1	Right
7	Collar	92152-2268	2	
8	Bolt	92154-1788	2	M6 × 12 mm (0.5 in.)
9	Bolt	130CB0616	4	M6 × 16 mm (0.6 in.)
10	O-ring	92055-0884	2	φ 15.8 mm (0.6 in.)
11	Collar	92152-2334	2	10.5 mm (0.4 in.)
12	Bolt	92153-1931	2	M10 × 65 mm (2.6 in.)
13	O-ring	92055-0885	2	φ 11 mm (0.4 in.)
14	Collar	92152-2335	2	16 mm (0.6 in.)
15	Wellnut	92015-1757	4	
16	Bolt	92154-2669	4	M5 × 16 mm (0.6 in.)
17	Cover	14093-0516	1	Left
18	Cover	14093-0517	1	Right



S106667CW2 C

Installation Instructions

Assembly Procedure For Left Side

- Remove the left frame cover (Refer to the Service Manual).
- Remove the middle front engine mounting bolt [A].
- If the middle front engine mounting bolt [A] can not be removed smoothly, loosen the middle engine bracket bolts [B], and then remove the middle front engine mounting bolt [A].

NOTE

- This bolt is not necessary for this accessory.

- Temporary tighten the middle front engine mounting bolt [A], and then tighten the middle engine bracket bolts [B].

Torque – Middle Engine Bracket Bolts [B]: 25 N·m (2.5 kgf·m, 18 ft·lb)

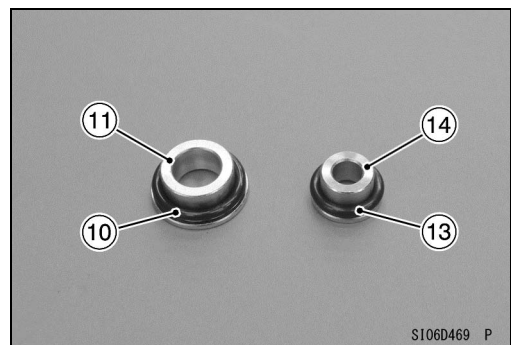
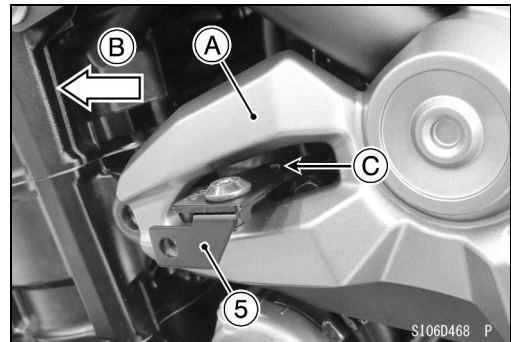
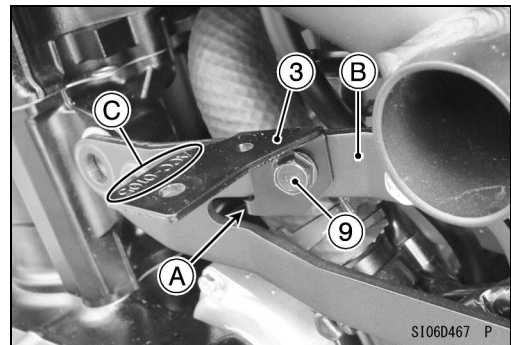
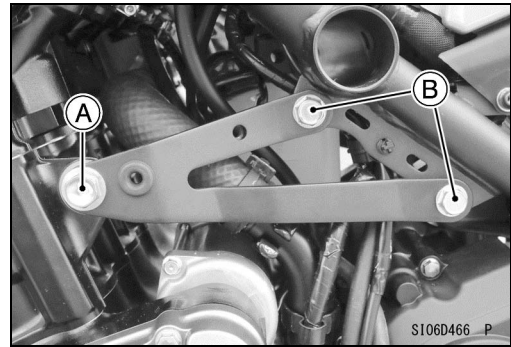
- Remove the middle front engine mounting bolt [A].
- Install the left bracket [3], and tighten the bolt [9].
- Fit the stopper [A] of the left bracket [3] to the middle engine bracket [B] as shown.

NOTE

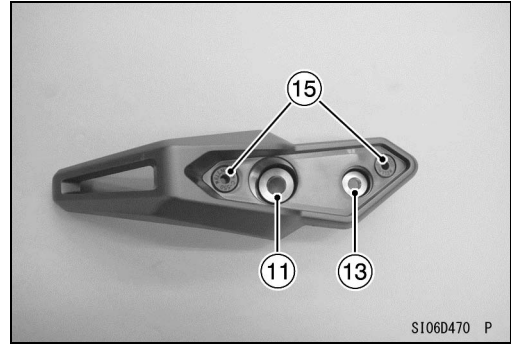
- This left bracket have a "ACC-0105" mark [C] and the right bracket have a no mark.

- Install the left frame cover [A] (Refer to the Service Manual).
- Install the left outside bracket [5] as shown.
Front [B]
- Insert the projection [C] of the left outside bracket [5] into the left bracket hole.

- Insert the O-ring [10] to the collar [11].
- Insert the O-ring [13] to the collar [14].

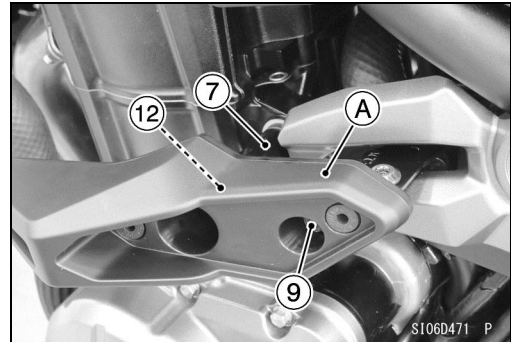


- Install the wellnuts [15].
- Install the collars [11] [13].



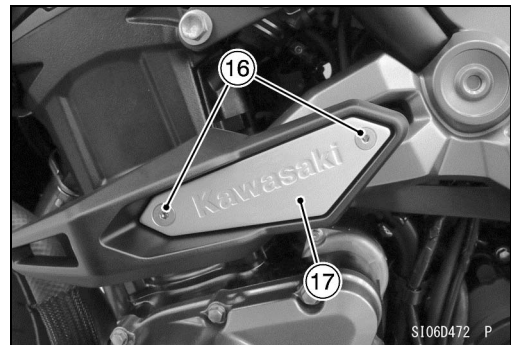
- Install:
Collar [7]
Pad Assy [A]
- Tighten:
Bolt [9]

Torque – Middle Front Engine Mounting Bolt [12]: 44 N·m (4.5 kgf·m, 32 ft·lb)



- Install the cover [17].
- Tighten:

Torque – Bolts [16]: 0.50 N·m (0.05 kgf·m, 4.4 in·lb)



NOTE

○ The right side slider installation is the same as left side.

Basic Torque for General Fasteners

The table below, relating tightening torque to thread diameter, lists the basic torque for the bolts and nuts. Use this table for only the bolts and nuts which do not require a specific torque value. All of the values are for use with dry solvent-cleaned threads.

Threads dia. (mm)	Torque		
	N·m	kgf·m	ft·lb
5	3.4 ~ 4.9	0.35 ~ 0.50	30 ~ 43 in·lb
6	5.9 ~ 7.8	0.60 ~ 0.80	52 ~ 69 in·lb
8	14 ~ 19	1.4 ~ 1.9	10 ~ 13.5
10	25 ~ 34	2.6 ~ 3.5	19 ~ 25
12	44 ~ 61	4.5 ~ 6.2	33 ~ 45
14	73 ~ 98	7.4 ~ 10.0	54 ~ 72
16	115 ~ 155	11.5 ~ 16.0	83 ~ 115
18	165 ~ 225	17.0 ~ 23.0	125 ~ 165
20	225 ~ 325	23.0 ~ 33.0	165 ~ 240

Check tightness of all fasteners in regular interval. Retighten loose fasteners.