

Assembly Instructions

Model:	ER250C/D, ER300A/B, EX250L/M, EX300A/B
Description:	Frame Slider
Part Number:	99994-0648, 99994-0726 (For ER250C/D and ER300A/B Models with Evaporative Emission Control)

Before you begin, read through these instructions and check that all parts are present. Please note that Kawasaki cannot assume any responsibility for damage resulting from incorrect installation. Kawasaki recommends that all genuine accessories should be fitted by an authorized Kawasaki dealer.

The following symbols indicate the information for proper installation and operation in this instruction.

NOTE : *NOTE indicates information that may help or guide you in the operation or service of the vehicle.*

- Indicates a procedural step or work to be done.
- Indicates a procedural sub-step or how to do the work of the procedural step it follows. It also precedes the text of a NOTE.

Refer to the following Service Manual for detailed procedures.

ER250C/D: P/No.: 99924-1467-04

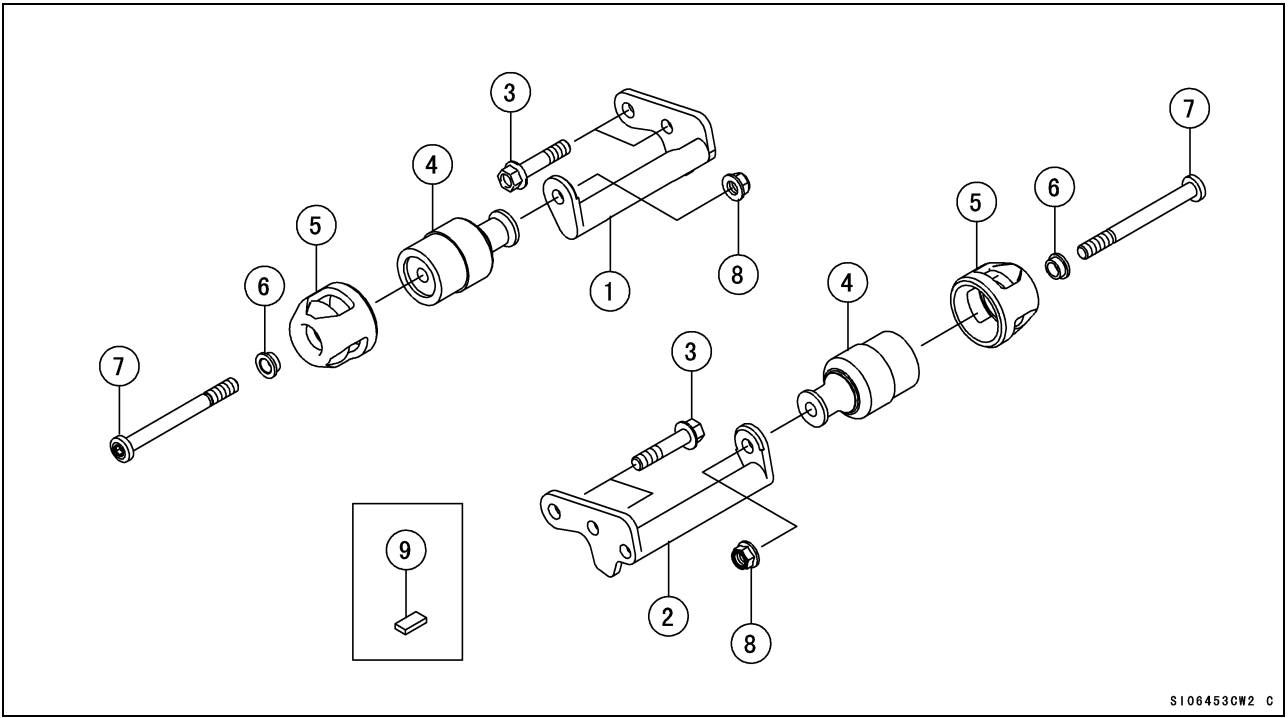
ER300A/B: P/No.: 99924-1492-01

EX250L/M: P/No.: 99924-1461-03

EX300A/B: P/No.: 99924-1460-03

Parts List				
No.	Component Name	Part No.	Qty	Remark
1	Bracket	39137-0633	1	Left
2	Bracket	39137-0634	1	Right
3	Bolt	92001-1522	4	L = 47
4	Boss	13061-0782	2	
5	Pad	39156-1913	2	
6	Collar	92152-2129	2	
7	Bolt	92154-1767	2	L = 105
8	Nut	92210-1081	2	
9	Damper*	39156-0927	1	99994-0726 only

*Damper is used for evaporative emission control equipped model only.



S106453CW2 C

Installation Instructions

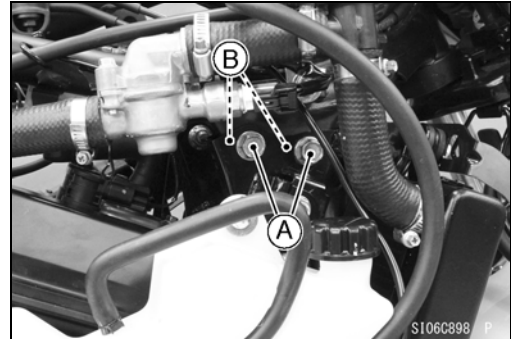
- Remove:
 - Fuel Tank (Refer to the Service Manual)
 - Middle/Lower Fairing (Refer to the Service Manual)

For Right Side

- Remove the front engine upper mounting bolts [A] and nuts [B].

NOTE

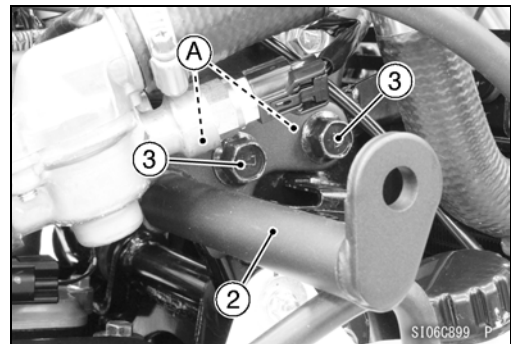
- The front engine upper mounting bolts are not necessary for this accessory.
- Reuse the front engine upper mounting nuts.



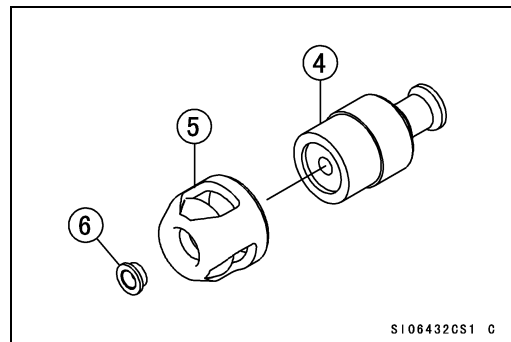
- Install the bracket [2].
- Tighten the bolts [3] and nuts [A].

Torque – Front Engine Upper Mounting Bolts [3]: 69 N·m (7.0 kgf·m, 51 ft·lb)

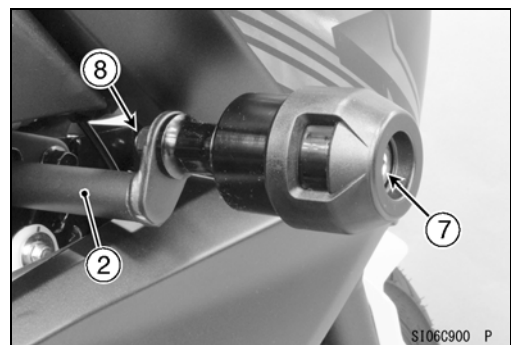
- Install the removed parts of right side. Installation is the reverse of removal (Refer to the Service Manual).
- For EX250L/M and EX300A/B models, do not install the inner fairing yet due to the convenience of tightening the bolt and nut below.



- Assemble the following parts as shown.
 - Boss [4]
 - Pad [5]
 - Collar [6]

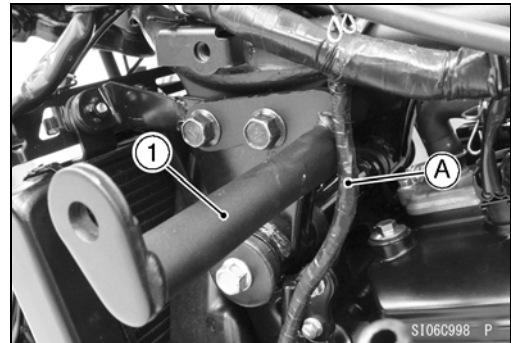


- Install the assembled parts to the bracket [2].
- Tighten the bolt [7] and nut [8] securely.



For Left Side of not Evaporative Emission Control System on ER250C/D, ER300A/B Models and EX250L/M and EX300A/B Models (99994-0648 only)

- The left side also install with the same procedure.
- For ER250C/D and ER300A/B models. Run the main harness [A] to backward at the bracket [1].



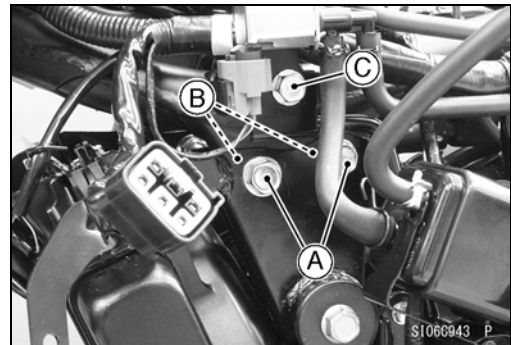
- Install the removed parts. Installation is the reverse of removal (Refer to the Service Manual).

For Left Side of Evaporative Emission Control System on ER250C/D and ER300A/B Models (999924-0726 only)

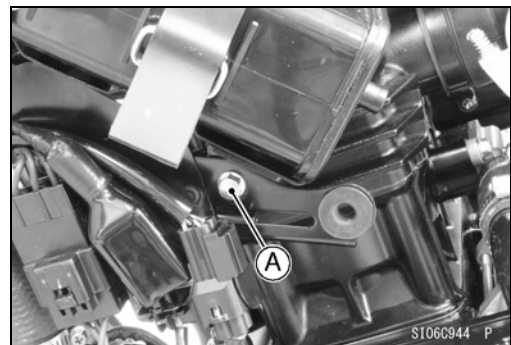
- Remove:
 - Front Engine Upper Mounting Bolts [A] and Nuts [B].
 - Canister Bracket Bolt (M8) [C]

NOTE

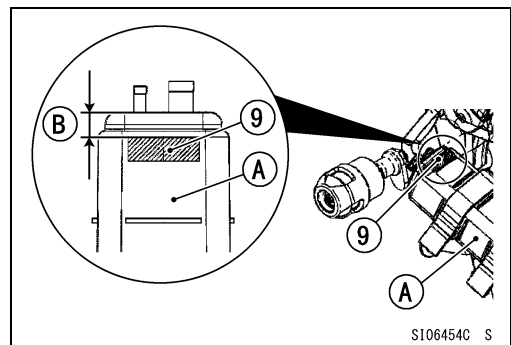
- *The front engine upper mounting bolts are not necessary for this accessory.*
- *Reuse the front engine upper mounting nuts.*



- Loosen the canister bracket bolt (M6) [A].



- Install the damper [9] to canister [A] as shown. About 10 mm (0.39 in.) [B]

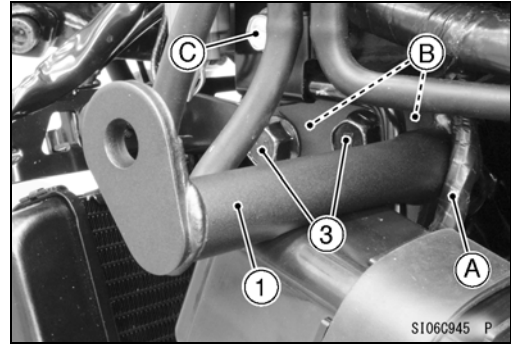


- Install the bracket [1] so that the main harness [A] position the backward at the bracket.
- Tighten the bolts [3] and nuts [B].

Torque – Front Engine Upper Mounting Bolts [3]: 69 N·m (7.0 kgf·m, 51 ft·lb)

- Tighten the Canister Bracket Bolt (M8) [C].

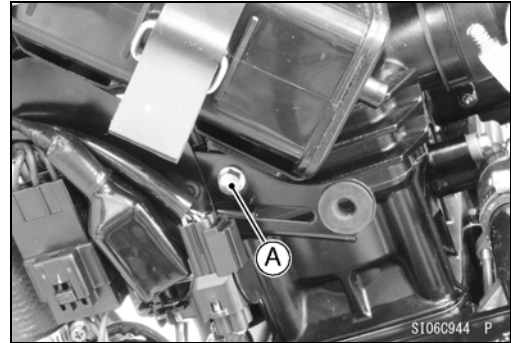
Torque – Canister Bracket Bolts (M8) [C]: 12 N·m (1.2 kgf·m, 106 in·lb)



- Tighten the Canister Bracket Bolt (M6) [A].

Torque – Canister Bracket Bolts (M6) [A]: 9.8 N·m (1.0 kgf·m, 87 in·lb)

- The following installation procedure is the same as the right side.



Basic Torque for General Fasteners

The table below, relating tightening torque to thread diameter, lists the basic torque for the bolts and nuts. Use this table for only the bolts and nuts which do not require a specific torque value. All of the values are for use with dry solvent-cleaned threads.

Threads dia. (mm)	Torque		
	N·m	kgf·m	ft·lb
5	3.4 ~ 4.9	0.35 ~ 0.50	30 ~ 43 in·lb
6	5.9 ~ 7.8	0.60 ~ 0.80	52 ~ 69 in·lb
8	14 ~ 19	1.4 ~ 1.9	10.0 ~ 13.5
10	25 ~ 34	2.6 ~ 3.5	19.0 ~ 25
12	44 ~ 61	4.5 ~ 6.2	33 ~ 45
14	73 ~ 98	7.4 ~ 10	54 ~ 72
16	115 ~ 155	11.5 ~ 16.0	83 ~ 115
18	165 ~ 225	17.0 ~ 23.0	125 ~ 165
20	225 ~ 325	23.0 ~ 33.0	165 ~ 240

Check tightness of all fasteners in regular interval. Retighten loose fasteners.