

Kawasaki

Assembly Instructions

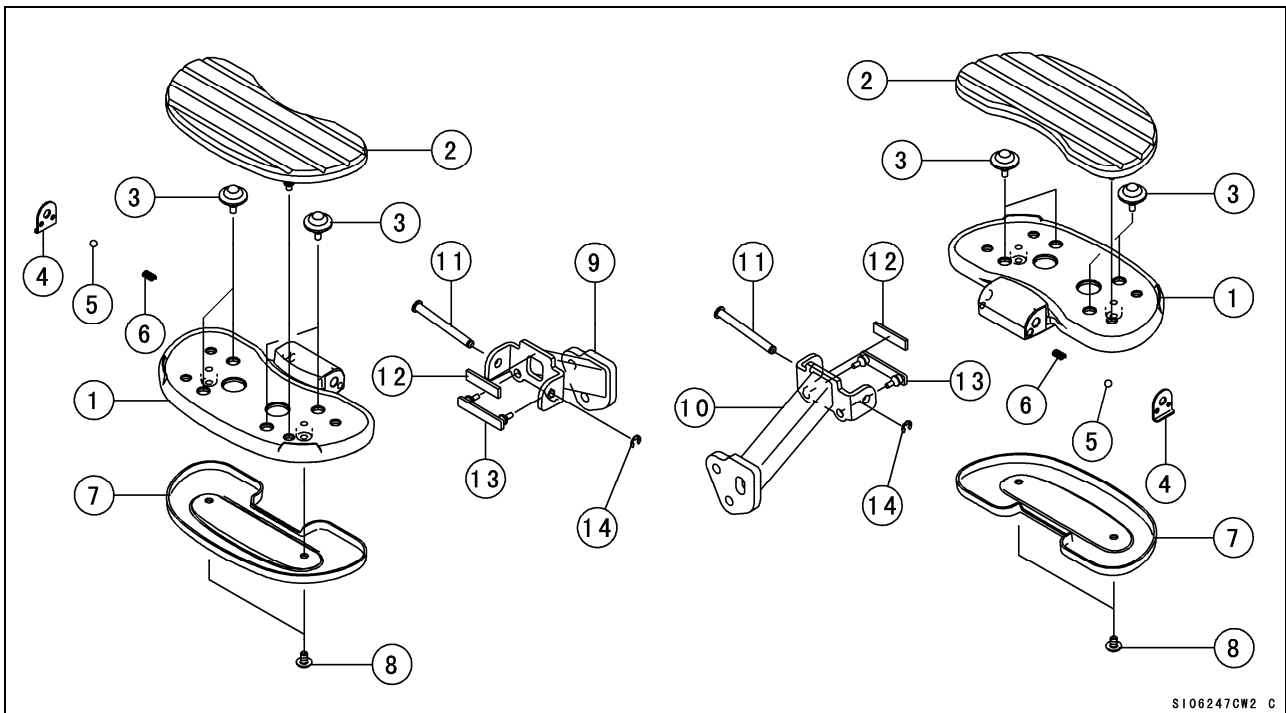
Description:	Rear Footboard
Part Number:	99994-0406

Before you begin, read through these instructions and check that all parts are present.

Please note that Kawasaki cannot assume any responsibility for damage resulting from incorrect installation. Kawasaki recommends that all genuine accessories should be fitted by an authorized Kawasaki dealer.

Parts List

No.	Component Name	Part No.	Qty	Remark
1	Footboard	34028-0145	2	
2	Outer Damper	92161-0771	2	
3	Inner Damper	92161-0766	8	
4	Stopper	32085-0045	2	
5	Steel Ball	600A0800	2	
6	Spring	92145-1319	2	
7	Footboard Cover	14091-1808	2	
8	Socket Bolt	92153-1096	4	L= 10 mm
9	Left Bracket	35063-0669	1	
10	Right Bracket	35063-0649	1	
11	Pin	92043-0054	2	
12	Damper	92161-0840	2	
13	Damper	92161-0772	2	
14	Circlip	482EA7000	2	



Installation Instructions

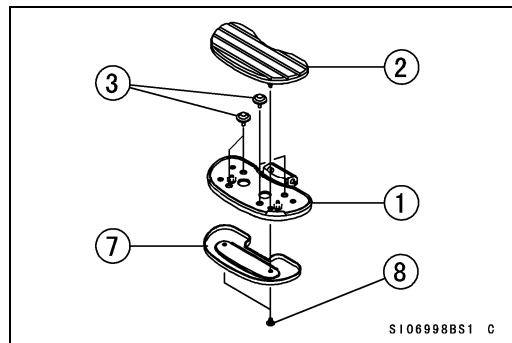
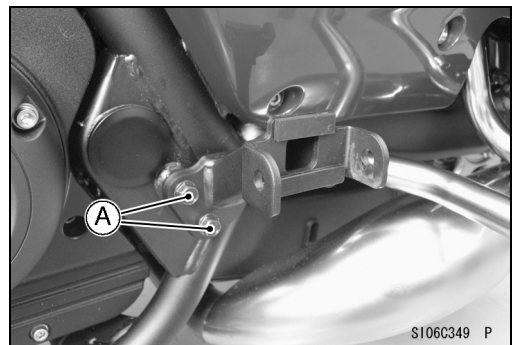
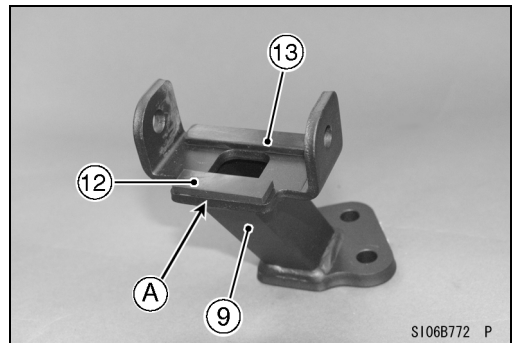
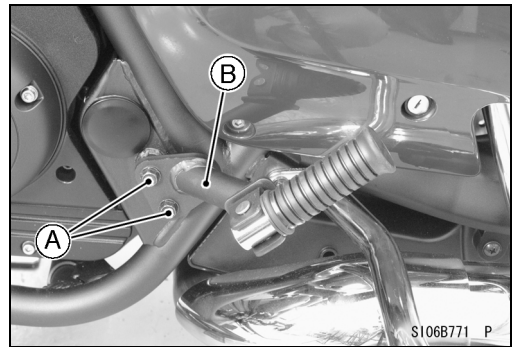
Assembly Procedure

- Remove:
 - Footpeg Bracket Bolts [A]
 - Footpeg Bracket [B]
- Keep the footpeg bracket bolts as those parts will be reused for installation.

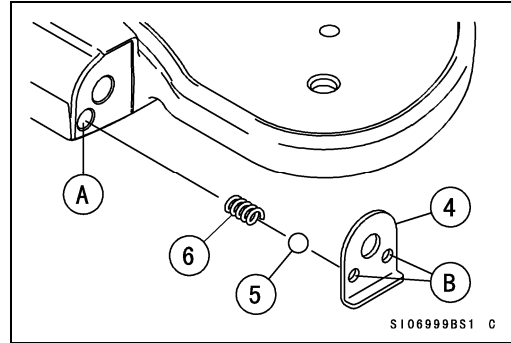
- Install the dampers [12][13] onto the left bracket [9].
 - Align the damper [12] end with the bracket edge [A].
 - Insert the projections of the damper [13] into the holes of the bracket.
 - For right side, install the dampers [12][13] onto the right bracket [10].

- Install the bracket with the bolts [A] (reuse).
Torque – Footboard Bracket Bolt: 25 N·m (2.5 kgf·m, 18 ft·lb)

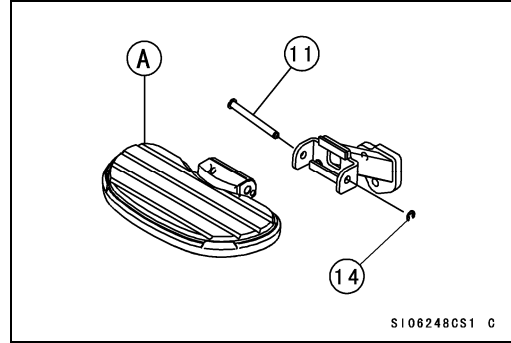
- Install the following parts onto the footboard [1].
 - Inner Dampers [3]
 - Outer Damper [2]
 - Footboard Cover [7] and Socket Bolts [8]



- Install the spring [6] and steel ball [5] into the hole [A] of the footboard.
- Fit the stopper [4] onto the footboard.
- The illustration shows right footboard. For left footboard, position the spring, steel ball and stopper forward.
- Apply grease to the holes [B].



- Install the footboard assembly [A] to the bracket.
- Apply grease to the sliding surface of the footboard.
- Insert the pin [11] from the front.
- Install the circlip [14].



- Install the right footboard in the same manner as the left side.

Basic Torque for General Fasteners

The table below, relating tightening torque to thread diameter, lists the basic torque for the bolts and nuts. Use this table for only the bolts and nuts which do not require a specific torque value. All of the values are for use with dry solvent-cleaned threads.

Threads dia. (mm)	Torque		
	N·m	kgf·m	ft·lb
5	3.4 ~ 4.9	0.35 ~ 0.50	30 ~ 43 in·lb
6	5.9 ~ 7.8	0.60 ~ 0.80	52 ~ 69 in·lb
8	14 ~ 19	1.4 ~ 1.9	10 ~ 13.5
10	25 ~ 34	2.6 ~ 3.5	19 ~ 25
12	44 ~ 61	4.5 ~ 6.2	33 ~ 45
14	73 ~ 98	7.4 ~ 10.0	54 ~ 72
16	115 ~ 155	11.5 ~ 16.0	83 ~ 115
18	165 ~ 225	17.0 ~ 23.0	125 ~ 165
20	225 ~ 325	23.0 ~ 33.0	165 ~ 240

Please check / adjust all screws at regular intervals.