

# Kawasaki

## Assembly Instructions

Model:	ZR1000F/G
Description:	Shroud Slider
Part Number:	99994-0400

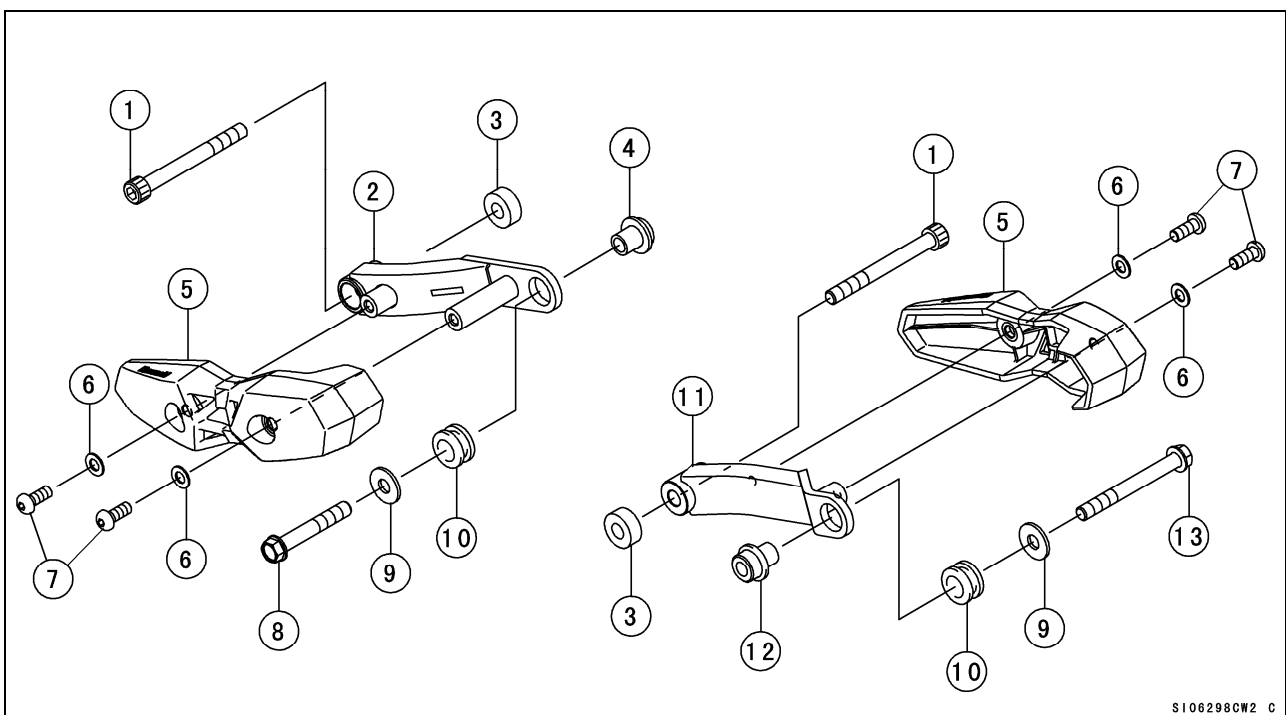
Before you begin, read through these instructions and check that all parts are present. Please note that Kawasaki cannot assume any responsibility for damage resulting from incorrect installation.

Kawasaki recommends that all genuine accessories should be fitted by an authorised Kawasaki dealer.

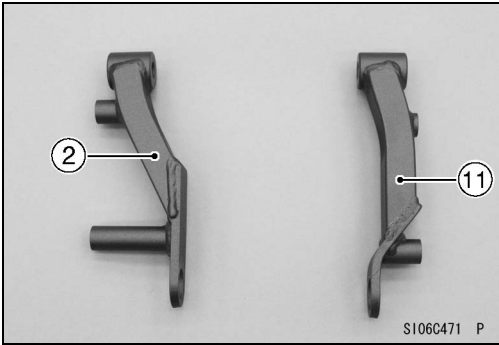
The following symbols indicate the information for proper installation and operation in this instruction.

**NOTE** : NOTE indicates information that may help or guide you in the operation or service of the vehicle.

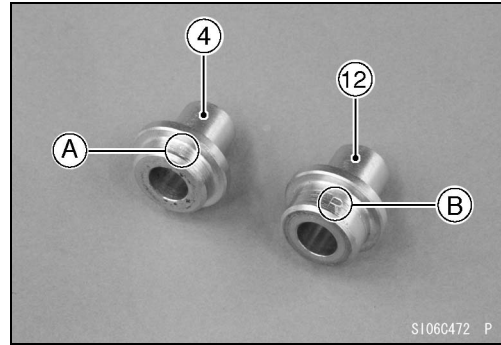
Parts List				
No.	Component Name	Part No.	Qty	Remark
1	Bolt	92154-0447	2	10 × 95 mm (0.4 × 3.7 in.)
2	Bracket	23062-0791	1	Left
3	Collar	92152-1790	2	Front
4	Collar	92152-1519	1	Rear, Left, 23.5 mm (0.93 in.)
5	Pad	39156-1768	2	
6	Washer	410AB0800	4	8.5 × 16 mm (0.33 × 0.6 in.)
7	Bolt	92153-0912	4	8 × 20 mm (0.3 × 0.8 in.)
8	Bolt	92153-1931	1	10 × 65 mm (0.4 × 2.6 in.)
9	Washer	92200-0088	2	10.5 × 26 mm (0.41 × 1.0 in.)
10	Damper	92161-1361	2	
11	Bracket	23062-0792	1	Right
12	Collar	92152-1520	1	Rear, Right, 27.2 mm (1.07 in.)
13	Bolt	92154-0448	1	10 × 90 mm (0.4 × 3.5 in.)



S106298CW2 C



2. Left Bracket  
11. Right Bracket



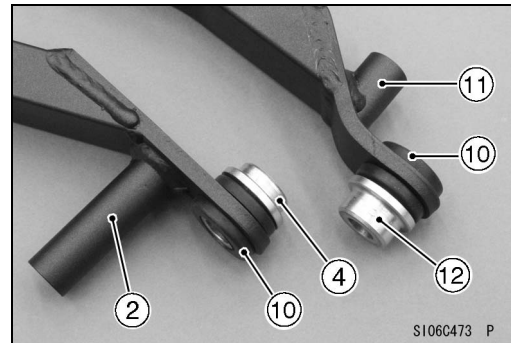
4. Rear Left Collar ([A]: "L" Mark)  
12. Rear Right Collar ([B]: "R" Mark)

Refer to the service manual for detailed procedures.

### Installation Instructions

#### Assembly Procedure

- Install the damper [10] and rear left collar [4] to the left bracket [2].
- Install the damper [10] and rear right collar [12] to the right bracket [11].



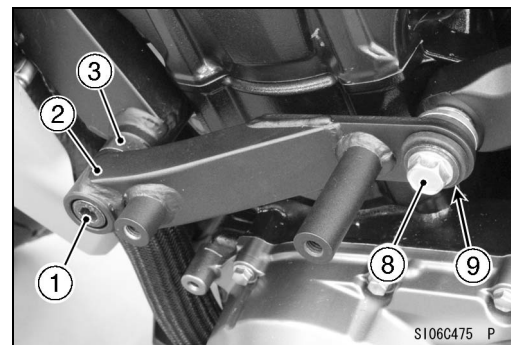
- Remove:  
Lower Engine Bracket Bolt [A]  
Upper Engine Mounting Bolt [B]

#### NOTE

- Discard the removed bolts.



- Install:  
Collar [3]  
Left Bracket [2]  
Bolt (L = 95 mm, 3.7 in.) [1]  
Bolt (L = 65 mm, 2.6 in.) [8]  
Washer [9]
- Tighten:  
**Torque – Front Bracket Mounting Bolt [1]: 59 N·m (6.0 kgf·m, 44 ft·lb)**  
**Rear Bracket Mounting Bolt [8]: 44 N·m (4.5 kgf·m, 32 ft·lb)**



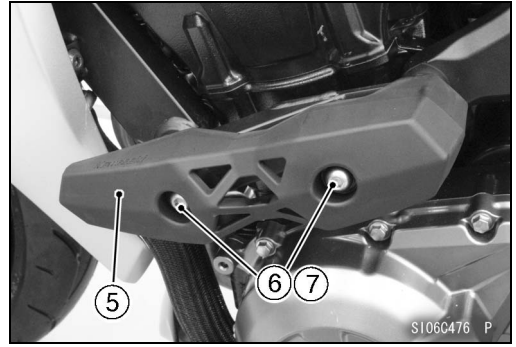
- Install the shroud slider [5], washers [6] and bolts [7] (L = 20 mm, 0.8 in.).

- Tighten:

**Torque – Shroud Slider Mounting Bolts [7]: 25 N·m (2.5 kgf·m, 18 ft·lb)**

**NOTE**

- *The right shroud slider installation is the same as for the left side.*



**Please check / adjust all screws in regular intervals.**