

Assembly Instructions

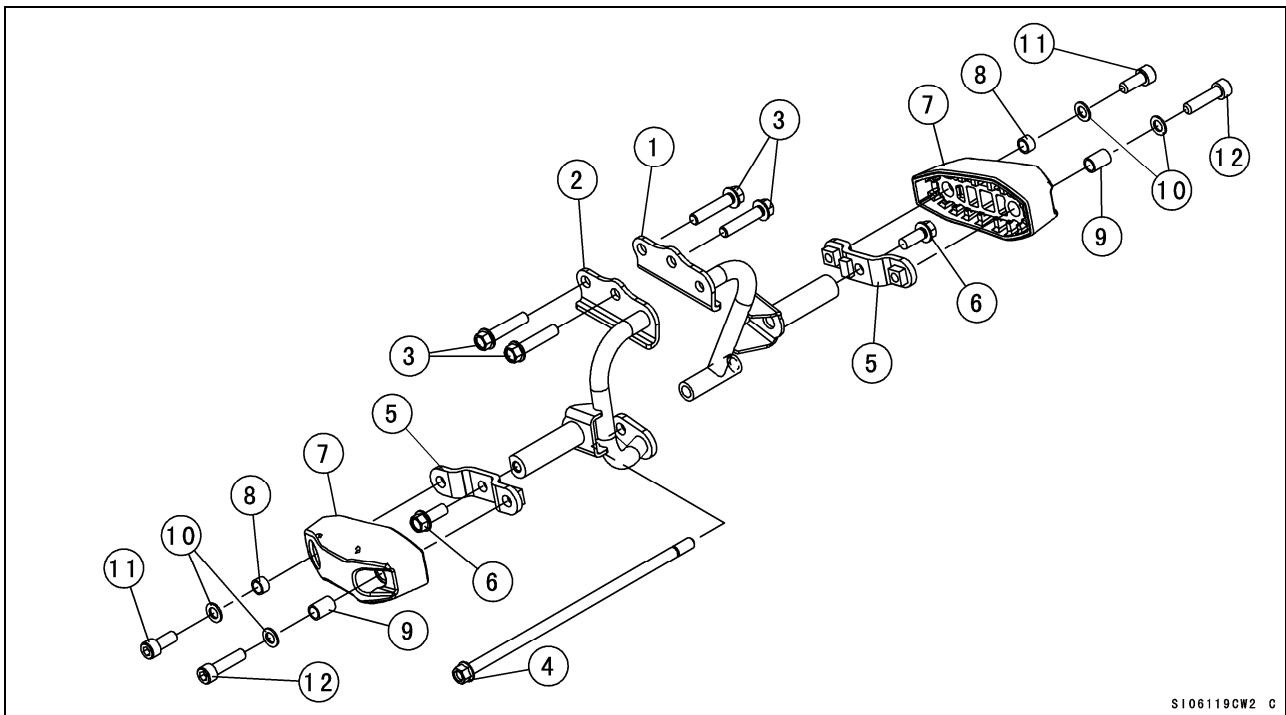
Model:	Ninja 300 (EX300A), Ninja 300 ABS (EX300B) Ninja 250 (EX250L), Ninja 250 ABS (EX250M)
Description:	Engine Guard
Part Number:	99994-0355

Before you begin installation, read through the installation instructions and check to be sure all parts are present.

If you are in doubt as to any part of the installation, please ask your authorized Kawasaki dealer to complete the installation. Please note that Kawasaki cannot assume any responsibility for damage resulting from incorrect installation.

Parts List

No.	Component Name	Part No.	Qty	Remark
1	Right Engine Guard Bracket	39137-0569	1	
2	Left Engine Guard Bracket	39137-0568	1	
3	Engine Bracket Bolt	92001-1522	4	M10 × 47
4	Engine Mounting Bolt	92151-1916	1	M10 × 280
5	Engine Guard Stay	11056-2117	2	
6	Bolt	130BB1025	2	
7	Engine Guard	39156-0758	2	
8	Collar	92152-1661	2	L = 7.8 mm
9	Collar	92152-1662	2	L = 19.8 mm
10	Washer	410AB1000	4	
11	Bolt	92154-1083	2	M10 × 30
12	Bolt	92154-1084	2	M10 × 40

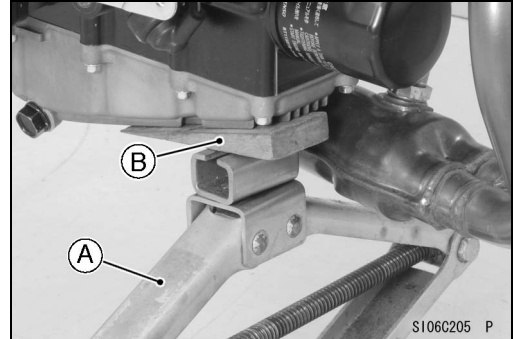


S106119CW2 C

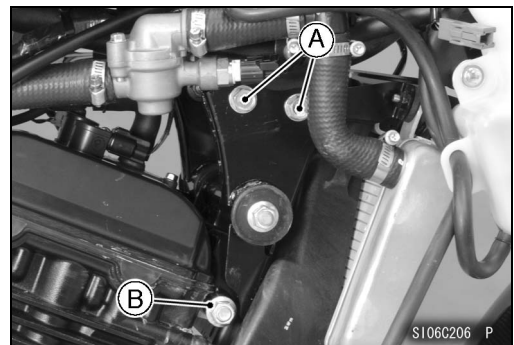
Installation Instructions

Assembly Procedure

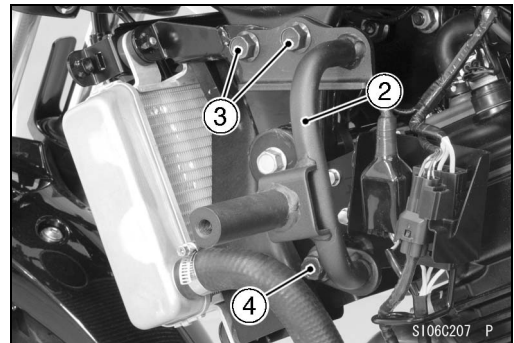
- Remove the middle fairings (refer to the Service Manual).
- Support the engine with a jack [A].
 - Put a plank [B] onto the jack for engine balance.



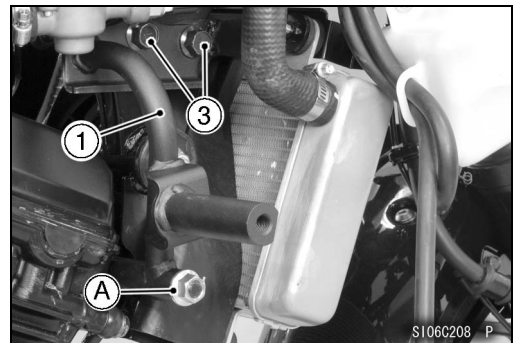
- Remove:
 - Engine Bracket Bolts [A] and Nuts (Both Sides)
 - Engine Mounting Nut [B] and Bolt
- Keep the nuts as those parts will be reused for installation.



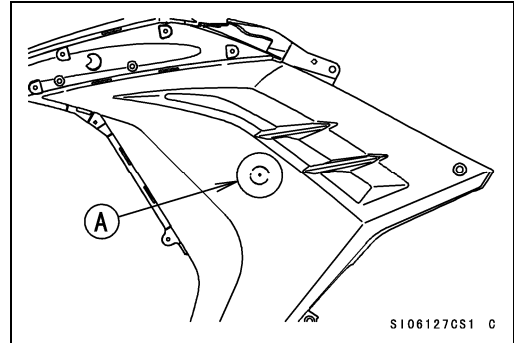
- Install:
 - Left Engine Guard Bracket [2]
 - Engine Bracket Bolts [3] and Nuts (Reuse)
 - Engine Mounting Bolt [4]
- Torque - Engine Bracket Bolts: 69 N·m (7.0kgf·m, 51 ft·lb)**



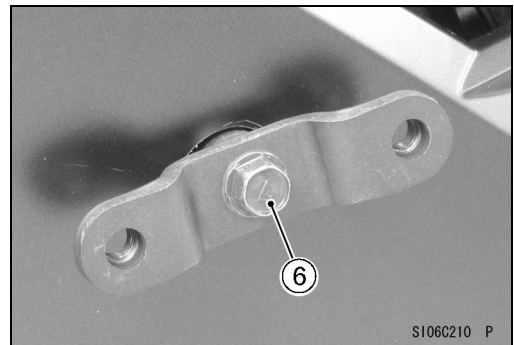
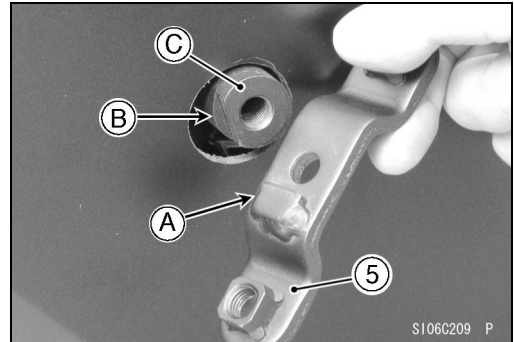
- Install:
 - Right Engine Guard Bracket [1]
 - Engine Bracket Bolts [3] and Nuts (Reuse)
 - Engine Mounting Nut [A] (Reuse)
- Torque - Engine Bracket Bolts: 69 N·m (7.0kgf·m, 51 ft·lb)**
Engine Mounting Nut: 69 N·m (7.0kgf·m, 51 ft·lb)



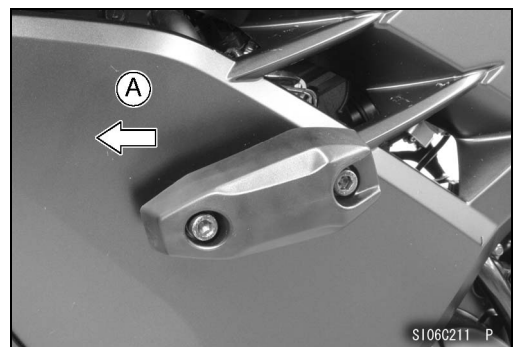
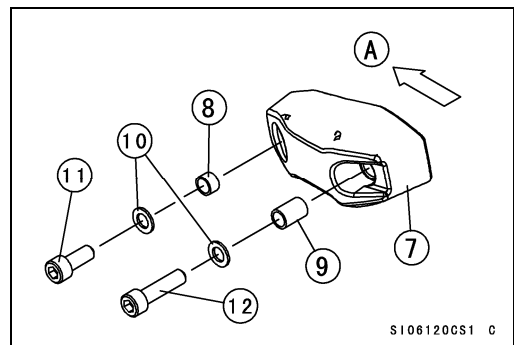
- Drill the middle fairing along a circle [A].
Diameter: about $\phi 30$ mm
- When installing the engine guard assy, if the clearance between the hole and bracket is too narrow, widen the hole.



- Install the middle fairings (refer to the Service Manual).
- Install the left engine guard stay [5] so that its rib [A] is aligned with the cut portion [B] of the engine bracket [C].
- Tighten the bolt [6].



- Set the following parts to install the engine guard as shown in the figure, and install the engine guard.
Engine Guard [7]
Collar [8]
Collar [9]
Washers [10]
Bolt [11]
Bolt [12]
Front Side [A]
- Install the other side in the same way.



Basic Torque for General Fasteners

The table below, relating tightening torque to thread diameter, lists the basic torque for the bolts and nuts. Use this table for only the bolts and nuts which do not require a specific torque value. All of the values are for use with dry solvent-cleaned threads.

Threads dia. (mm)	Torque		
	N·m	kgf·m	ft·lb
5	3.4 ~ 4.9	0.35 ~ 0.50	30 ~ 43 in·lb
6	5.9 ~ 7.8	0.60 ~ 0.80	52 ~ 69 in·lb
8	14 ~ 19	1.4 ~ 1.9	10 ~ 13.5
10	25 ~ 34	2.6 ~ 3.5	19 ~ 25
12	44 ~ 61	4.5 ~ 6.2	33 ~ 45
14	73 ~ 98	7.4 ~ 10.0	54 ~ 72
16	115 ~ 155	11.5 ~ 16.0	83 ~ 115
18	165 ~ 225	17.0 ~ 23.0	125 ~ 165
20	225 ~ 325	23.0 ~ 33.0	165 ~ 240

Please check / adjust all screws in regular intervals.