

Kawasaki

Assembly Instructions

Model:	EX250P/S, EX400G/H
Description:	Pillion Seat Cover
Part Number:	99994-1038-□□□ (□□□ is in the color codes.)
Flat Rate Time(Hr):	0.3

Before you begin, read through these instructions and check that all parts are present. Please note that Kawasaki cannot assume any responsibility for damage resulting from incorrect installation. Kawasaki recommends that all genuine accessories should be fitted by an authorized Kawasaki dealer.

Installation of this product will affect the passenger capacity.
Confirm your local regulations before installation.

The following symbols indicate the information for proper installation and operation in this instruction.

NOTE : *NOTE indicates information that may help or guide you in the operation or service of the vehicle.*

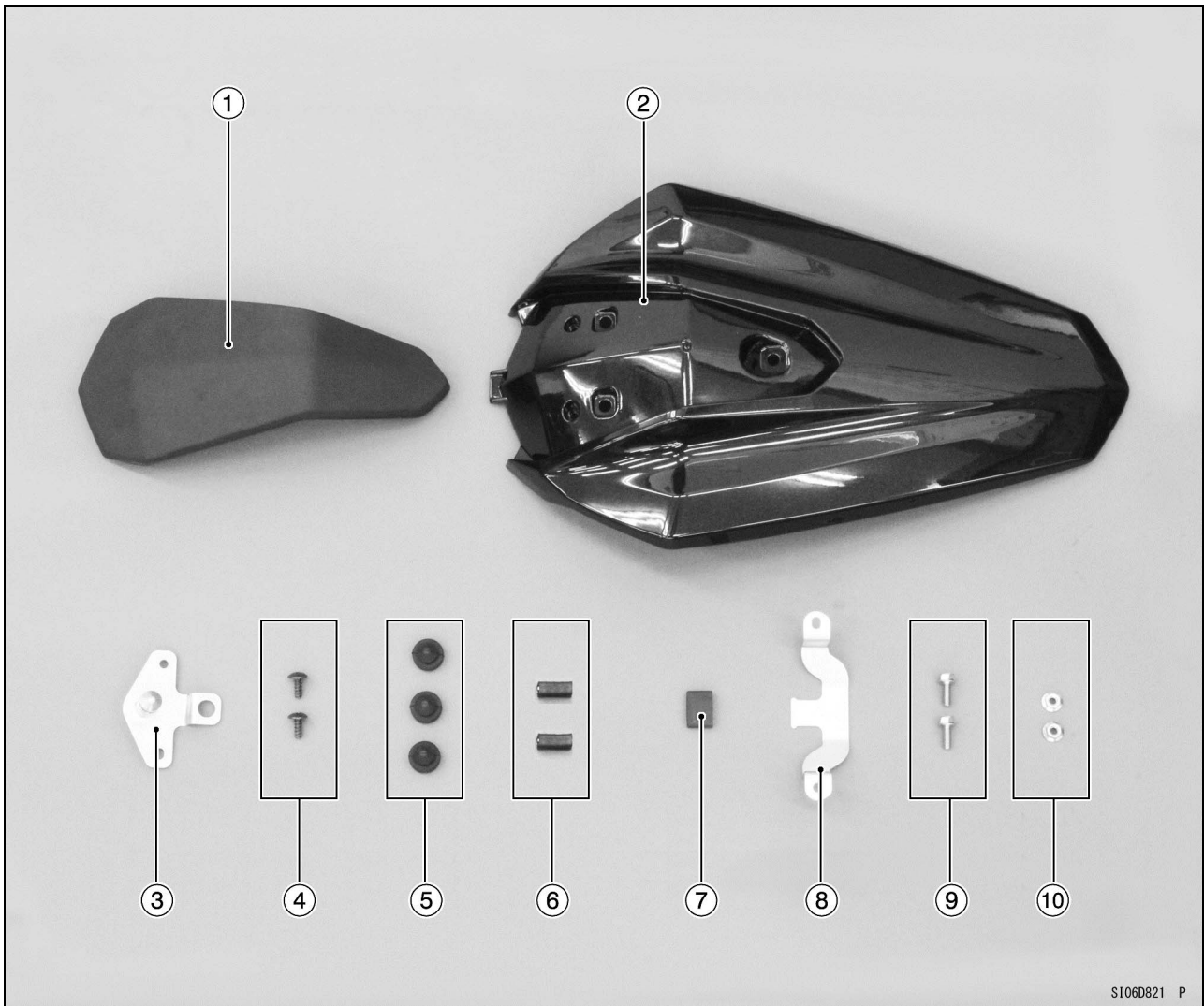
- Indicates a procedural step or work to be done.
- Indicates a procedural sub-step or how to do the work of the procedural step it follows. It also precedes the text of a NOTE.

Refer to the Service Manual for detailed procedures.

(EX250P/S) P/No.: 99924-1534-01

(EX400G/H) P/No.: 99924-1536-01

Parts List				
No.	Component Name	Part No.	Qty	Remark
1	Damper	92161-1988	1	
2	Seat Cover	53065-0044-□□□	1	□□□ is in the color codes.
3	Striker	11057-1241	1	
4	Screw	92172-0821	2	
5	Damper	92161-1473	3	
6	Trim	53044-0021	2	
7	Damper	92161-1472	1	
8	Bracket	11057-1242	1	
9	Bolt	92154-2894	2	L = 14 mm (0.55 in.)
10	Nut	92015-1656	2	



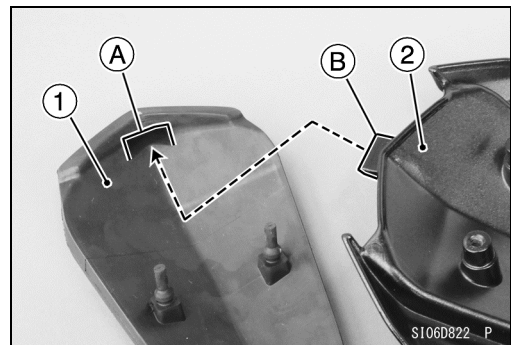
S106D821 P

Installation Instructions

NOTE

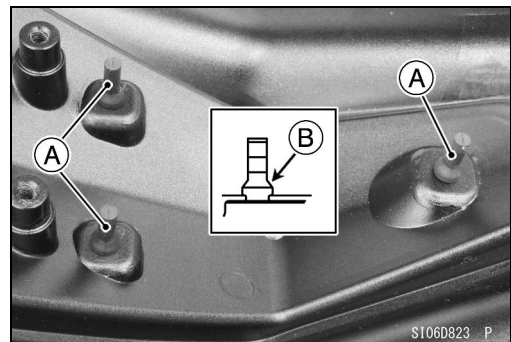
○ *In order to protect the seat cover from being damaged, do the work on a soft material such as cloth.*

- Install the damper [1] to the seat cover [2].
- Fit the slot [A] and the projection [B].



S106D822 P

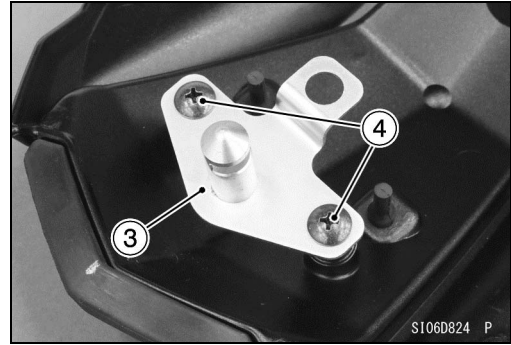
- Insert the projections [A] of the damper through the hole on the seat cover.
- Be sure to install the flange [B] of the projections fully as shown.



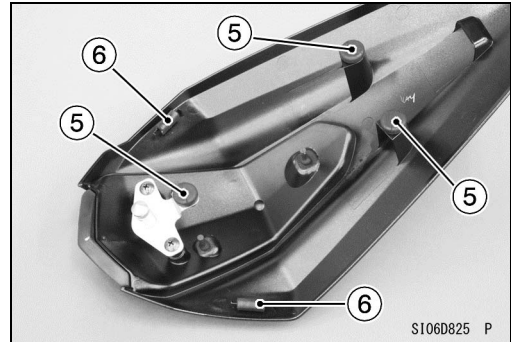
S106D823 P

- Install the striker [3].
- Tighten the screws [4].

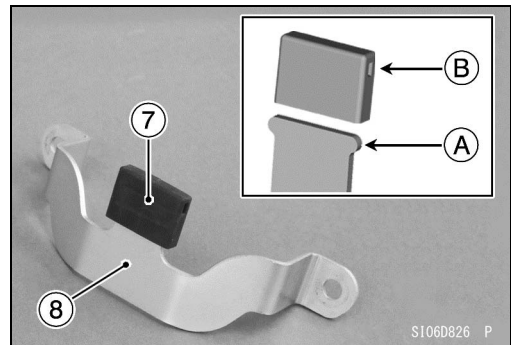
Torque – Striker Mounting Screws: 1.2 N·m (0.12 kgf·m, 11 in·lb)



- Install the dampers [5].
- Push and twist it.
- Install the trims [6].

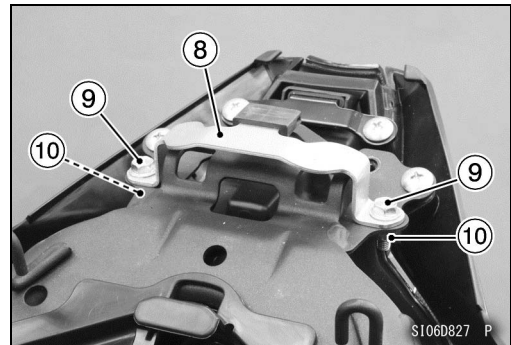


- Install the damper [7] to the bracket [8].
- Fit the projection [A] and the hole [B] on both sides.

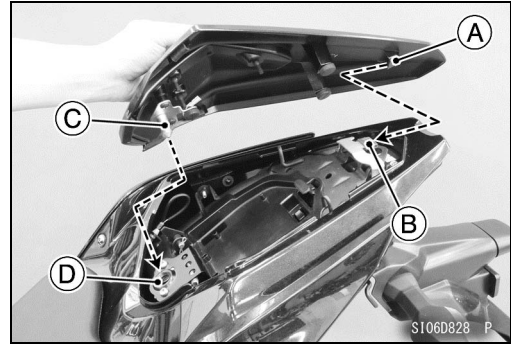


- Remove the following parts (Refer to the Service Manual).
 - Seats
 - Seat Covers

- Install the bracket [8] with the bolts [9] and the nuts [10].
- Tighten them on the left side of the vehicle firstly.
- Install the following parts (Refer to the Service Manual).
 - Seat Covers
 - Front Seat



- Insert the slot [A] on the pillion seat cover into the hook [B] on the bracket.
- Insert the striker [C] into the latch hole [D].
- Push down the front part of the pillion seat cover until the lock clicks.



NOTE

- Pull up the front end of the pillion seat cover to make sure it is securely locked.
- To remove the pillion seat cover, pull it backward horizontally.

Basic Torque for General Fasteners

The table below, relating tightening torque to thread diameter, lists the basic torque for the bolts and nuts. Use this table for only the bolts and nuts which do not require a specific torque value. All of the values are for use with dry solvent-cleaned threads.

Threads dia. (mm)	Torque		
	N·m	kgf·m	ft·lb
5	3.4 ~ 4.9	0.35 ~ 0.50	30 ~ 43 in·lb
6	5.9 ~ 7.8	0.60 ~ 0.80	52 ~ 69 in·lb
8	14 ~ 19	1.4 ~ 1.9	10 ~ 13.5
10	25 ~ 34	2.6 ~ 3.5	19 ~ 25
12	44 ~ 61	4.5 ~ 6.2	33 ~ 45
14	73 ~ 98	7.4 ~ 10.0	54 ~ 72
16	115 ~ 155	11.5 ~ 16.0	83 ~ 115
18	165 ~ 225	17.0 ~ 23.0	125 ~ 165
20	225 ~ 325	23.0 ~ 33.0	165 ~ 240

Check tightness of all fasteners in regular interval. Retighten loose fasteners.