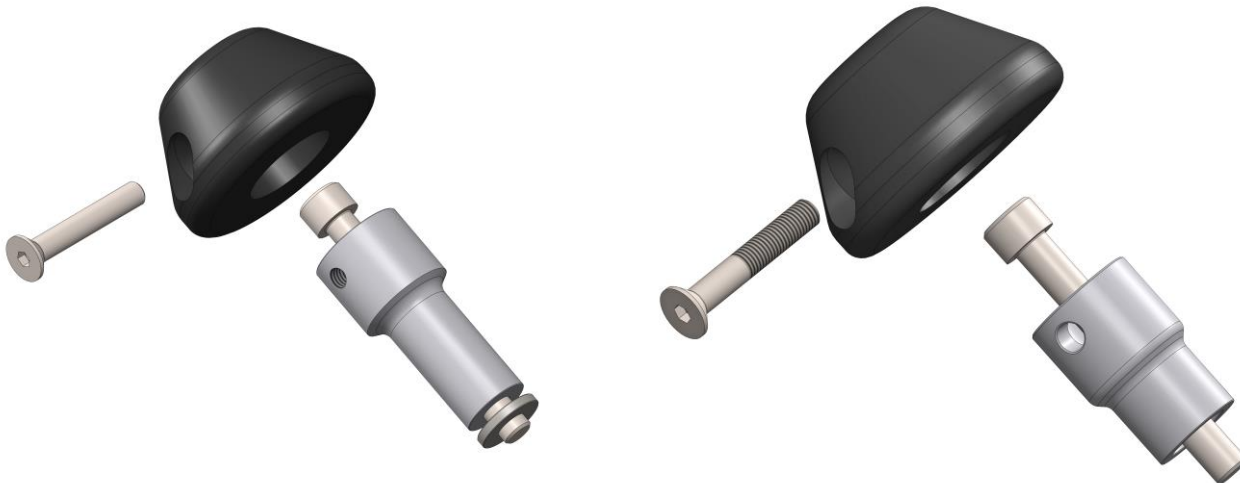


1) The sliders will use the most forward engine mount on each side. Completely install the sliders one side at a time – never loosen both motor mount bolts at the same time, or your engine may move and you will have to jack it back in place to ensure proper alignment for re-installation..

Left Side – long base with 90mm bolt

Right Side – Short base with 80mm bolt



2) Attach the slider bases to the motorcycle using the 10mm bolts provided, threading them in place of your motor mount bolt on each side. On the left side, place the stainless washer between the slider base and the frame. **Coat bolts that thread into aluminum (both bolts do this) with anti-seize and torque them to about 35 ft-lbs.**

WARNING: Since motor mount bolts are usually fine thread steel bolts going into an aluminum engine, it is easy to cross thread them and damage the threads. Always start the first few turns by hand before using a ratchet on the bolt.

4) Slide the plastic slider over the top of the base and secure in place using the 8 mm countersunk bolt provided. The bolt passes first through the non threaded hole and then screws into the threaded hole on the far side of the base. The plastic is undersized on the far side of the slider to act as a locknut for the bolt

105 Baldwinville Rd Winchendon, MA 01475 978-297-2977

WARNING: Improper installation and/or failure to comply with all warnings and instructions may cause a loss of control and serious injury or death. The motorcycle should be run and thoroughly inspected before use. **DO NOT INSTALL OR USE THIS PRODUCT IF YOU ARE UNABLE TO DO SO IN COMPLIANCE WITH ALL INSTRUCTIONS AND WARNINGS. SEEK THE ASSISTANCE OF A TRAINED PROFESSIONAL TECHNICIAN.**