



EVOTECH®
P E R F O R M A N C E

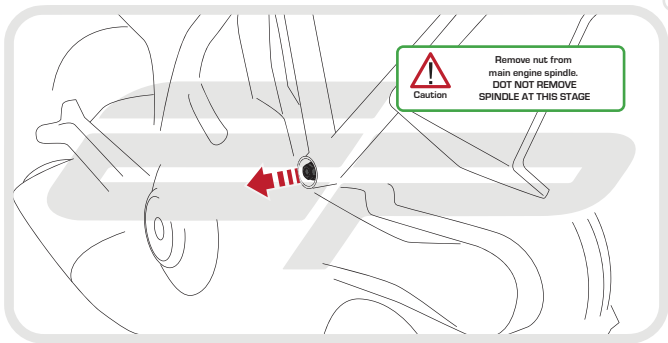
Installation Instructions

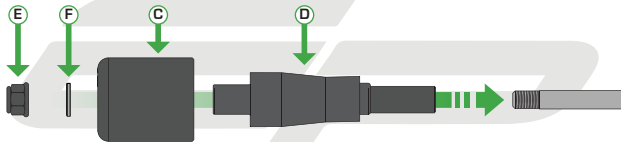
DUCATI SCRAMBLER SIXTY2 2016 CRASH PROTECTION

Product Reference - 13021

Kit Contents

- Ⓐ 1 x M12 Spindle
- Ⓑ 1 x LH Frame Shim
- Ⓒ 2 x Bobbin Heads
- Ⓓ 2 x Bobbin Spacers
- Ⓔ 2 x M12 Nyloc Nuts
- Ⓕ 2 x M12 Washers



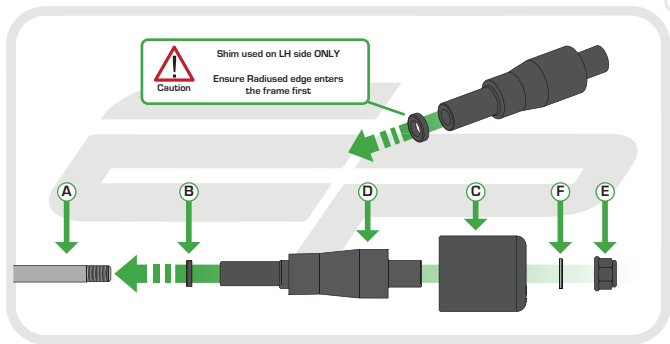




Caution

Slide entire assembly through the frame and engine from the RH Side.
As you slide the new spindle through, push the original spindle out of the LH Side.
DO NOT remove the original spindle without the new one in place or the engine may drop.

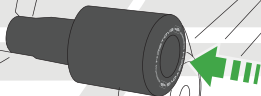






Caution

Max Torque Setting 62(Nm)





ESSENTIAL CHECKS



It is recommended that periodic inspections are made to ensure that all bolts are tightened to the specified torque settings.

Should the bike be involved in an accident a thorough inspection should be made and any components that have taken an impact, no matter how small, be replaced



EVOTECH®
P E R F O R M A N C E

www.evotech-performance.com