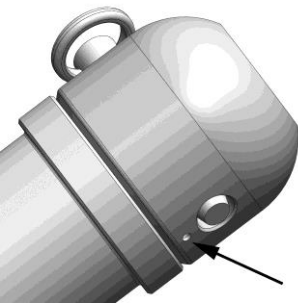


**Important Note:** Sometimes the inner portion of axles are damaged when they are “hammered” in. Since our axle sliders are a precise fit, you will need to file off any raised edges that exist. You will not need to do this on an axle in good condition.



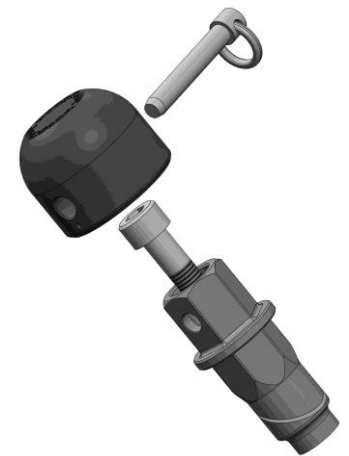
1) **Axle Side:** The large hex base will be installed in the hex of the axle itself. To install the base, thread the 8x45mm socket head bolt into the assembly until it is almost tight, leaving a small gap between the halves. Slide the assembly into the axle and be sure that it is fully seated against the axle itself.

2) Tighten the 8mm bolt to lock the assembly in place. You should hold the base with a wrench while doing this to ensure you can fully lock the axle side in place.



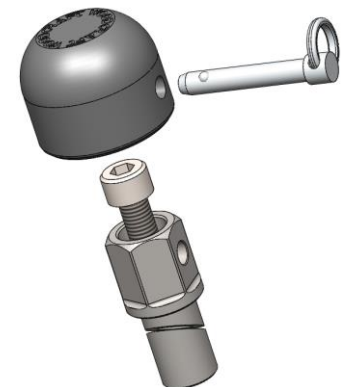
3) Install the plastic top using the removable pin.

**Important:** One side of the puck has a small hole drilled beneath the main hole. Install the pin so that the end of the pin with the ball is on the same side as this small hole. Install the pin so that the ring is on the upper half of the slider.

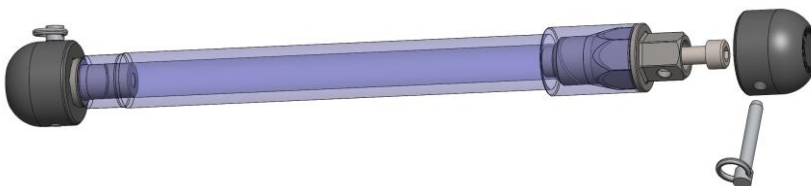


4) **Nut Side:** The nut side assembly can be installed with the axle nut in place. Thread the 8x25mm socket head bolt into the assembly until it is almost tight, leaving a small gap between the halves. Slide the assembly into the end of the axle and be sure that it is fully seated against the axle.

5) Tighten the 8mm bolt to lock the assembly in place. You should hold the base with a wrench while doing this to ensure you can fully lock the axle side in place.



6) Install the plastic top using the removable pin. Be sure to orient the pin as done in step 3. To remove the axle, simply take the puck off the nut side. The nut will slide over the base and the main axle slider bases can remain installed.



105 Baldwinville Rd, Winchendon, MA 01475

978-297-2977

WARNING: Improper installation and/or failure to comply with all warnings and instructions may cause a loss of control and serious injury or death. The motorcycle should be run and thoroughly inspected before use. DO NOT INSTALL OR USE THIS PRODUCT IF YOU ARE UNABLE TO DO SO IN COMPLIANCE WITH ALL INSTRUCTIONS AND WARNINGS. SEEK THE ASSISTANCE OF A TRAINED PROFESSIONAL TECHNICIAN.