



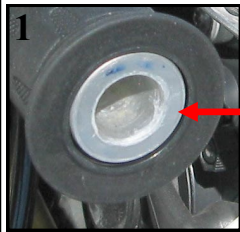
**KAOKO™ CRUISE CONTROL KIT:  
CCF110, CCF130, CCF130C, CCF400-13WC, CCF916**

**For BMW Models:** S1000RR/ABS (2010-), HP4 (2013-),  
K1600GT and K1600GTL (2011-), R1200GS LC Water-cooled (2013-); F800GT (2013-)



Patents  
"U.S. Pat. No. US D593,462 S"  
"U.S. Pat. No. US D593,463 S"  
"U.S. Pat. No. US D593,464 S"

RSA Registered Designs  
No. A2007/00202 No. A2007/00205  
No. A2007/00203 No. A2007/00206  
No. A2007/00204 No. A2007/00207



OEM Bar

**Thrust Washer**  
inserted in between the **Friction Nut** and the end of the handle bar (throttle grip),

When correctly engaged the Thrust Washer must thrust against the plastic throttle sleeve; not the rubber throttle grip.

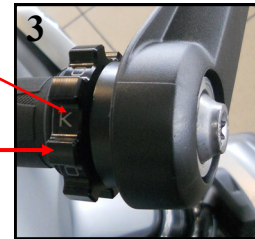


Assembled KAOKO™ Kit:  
No Hand Guards

**Friction Nut Grub  
Screw**

**KAOKO™  
Friction Nut**

**KAOKO™  
Bar weight**



Assembled KAOKO™ Kit:  
with Hand Guards

**KAOKO Kit  
Comprises of :**

End Weight,  
Friction Nut,  
Thrust Washer,  
2mm Allen key,  
Fitting  
Instructions

**DISCLAIMER: NO RESPONSIBILITY ACCEPTED FOR NON-ADHERENCE TO THESE INSTRUCTIONS**

**KAOKO™ Safety Warning:**

See: [www.kaoko.com](http://www.kaoko.com) for further information [info@kaoko.com](mailto:info@kaoko.com)

The KAOKO™ Cruise Control is an aftermarket accessory. Any misunderstood, abused or incorrectly installed motorcycle accessory is a safety hazard that could cause injury or death. It's the rider's responsibility to understand the operation and purpose for which the KAOKO™ Cruise Control is designed, namely, for cruising, only when safe to do so. At all other times the control should be disengaged. The KAOKO™ Cruise Controls are to be used only by experienced and responsible riders.

**Fitting & Operating Instructions :**

**Step 1:** Completely remove the right hand side bar weight as shown in picture 1.

**Step 2:** (Use the stock/OEM central screw for the KAOKO™ KIT) Adjust the KAOKO™ Friction Nut up against the shoulder of end weight as shown in Picture 2. Place the KAOKO™ Thrust Washer in between the friction nut and the end of throttle sleeve. Firmly fasten the central retaining screw as seen in Picture 2.

**Step 3:** See under **Maintenance below** and set grub screw as described (2mm Allen key). See picture 3

An adjustment to throttle assembly position may be necessary to suit KAOKO™ Cruise Controls. The throttle assembly position on aftermarket bars, and *some OEM bars*, is adjustable. The assembly can be marginally re-positioned along the handle bars by slightly *loosening* the throttle assembly clamp screws, and then sliding the entire throttle assembly along the handle bars (left or right). Once done, firmly tighten the clamp screws to OEM torque specifications. This adjustment is generally not necessary.

**Note:** CCF130/C is supplied with an M8 Bright Washer for rare fitting assemblies where insufficient clearance between the Friction Nut and throttle sleeve exists. In this event, fit the M8 Washer onto the central retaining bolt in between the end of the bar weight stem & the threaded insert inside the handle bar tube. This washer is generally not required.

**Note:** CCF400-08WC fits models with and without OEM hand guards. For models with OEM hand guards; simply install the OEM hand guards to the KAOKO end weight; as shown in Picture 3.

**Operation:** The friction nut has a **left hand thread**. In readiness for engagement, it must be adjusted so that it makes light contact with the thrust washer.

**To Engage:** While rolling on the throttle, the friction nut can be gripped between the small finger and palm of hand. This action tightens the nut and provides sufficient friction to set the throttle to the desired opening.

**(The friction is such that the rider may still open and close the throttle. It simply has a slight stiffness to it.)**

**To Disengage:** While rolling off the throttle, grip the friction nut between the small finger and palm of hand.

**VERY IMPORTANT!! The throttle should open and snap closed freely when correctly disengaged.**

**Note:** The Grub Screw is set to provide the necessary resistance on thread of friction nut. This may be adjusted periodically to take up wear (2mm Allen key).

**Note:** For bikes with electronic cruise controls; the KAOKO™ KIT is to be used independently and is to be regarded as a means of setting rotational resistance to the throttle sleeve. It is advised to fully disengage the KAOKO™ KIT when using the electronic cruise control.

**Maintenance:** Remove kit annually. Unscrew friction nut and brush clean threads with mild soap. Apply petroleum jelly to threads and assemble. Adjust grub screw to desired operating resistance. The Friction Nut should be slightly stiff turning.

*(O-Ring cushion: 19.6mm I.D. x 2.4mm section — if replacement is required)*

**Indemnity:**

It is advised that the use of the cruise control is at the sole risk of the rider and by his/her decision to use it he/she does indemnify the manufacturers or organizers, their agents, employees and officers against any claim or action by themselves, their dependents or any other third party arising out of any loss, damage, injury or death suffered.