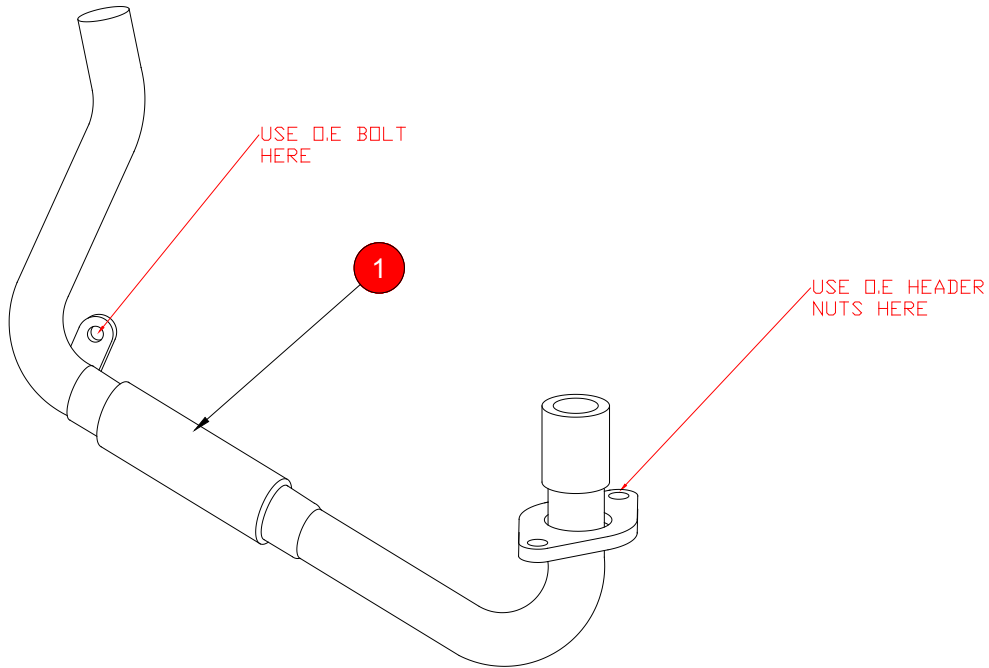


Box: PLOCK 1

BIKE	HONDA MSX 125cc	PART NO.	HA-170
YEAR	2013- Current	FIT KITS	N/A
NOTES	Use standard fittings where not supplied. MUST BE FITTED WITH RHA170	FEATURES	N/A



1 Header Pipe CP858

E-MARK	N/A
ISSUE NO.	0
DATE	14/07/15
AUTHORISED	T.Rowley
CHECKED	

NOTE: ENSURE SCORPION SYSTEM IS CLEAR OF MOVING PARTS AND ALL ORIGINAL FUNCTIONS WORK CORRECTLY.

A) Remove original exhaust, taking care not to lose or damage any of the original components.

B) Fit the Scorpion Exhaust as per line diagram above.

C) When fitted, take bike for a short test run, upon return allow bike to cool and check all nuts and bolts are secure.