

Thank you for purchasing a National Cycle® product. Please read these instructions carefully and thoroughly before beginning work. Dealers if installing this fairing for a customer please give them this manual. It contains information needed to properly maintain and use this product.

Patents: 5732965, 6254166B1, 6974175B2.

Attention



Special notes and cautionary measures which can prevent damage to the accessory or motorcycle.

Note



Tips for facilitation of operation, control and adjustment, as well as maintenance.

Parts List				Notes
Item	Part Number	Description	Qty.	
1	N21601	Dark Tint, Chrome Hardware	1	One Wave Fairing Assembly. Mount Kit-Q143 is required to mount the windshield to the motorcycle. Kit sold separately.

TOOLS REQUIRED:

7/16" Box Wrench



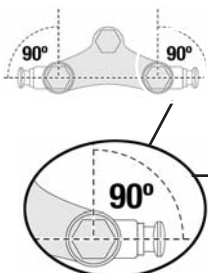
PREPARATION

1. Position the motorcycle securely on its stand.
2. Cover the front fender and fuel tank with a cloth to avoid scratches.

INSTALLATION

Install Kit-Q143 to Fork (Kit Sold Separately)

1. Follow the Installation procedure in Mount Kit-Q143. Installation manuals are also located on line at:
www.nationalcycle.com/techsupport/ispl.html



2. The spools of Mount Kit Q143 should be perpendicular to the fairing bracket.



Figure 1

INSTALLATION

Install The Fairing

3. The fairing brackets are preset at the mid point of the adjustment range. Before making adjustments to this bracket, install the shield onto the motorcycle first. Refer to Final Adjustment, page 3. **Figure 2**

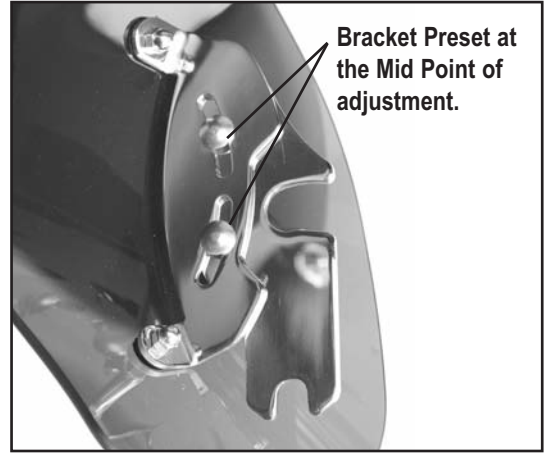


Figure 2

4. Straddle the front tire while holding your fairing at the area of the upper mount points. **Figure 3**

5. Place the lower two notches of the fairing brackets onto the two lower spools of the mounting hardware. Slight flexing of the fairing may be necessary to accomplish this.

6. Pivot the fairing toward the bike. The upper notches of the brackets will line up with the center line of the upper spools on the mounting hardware. **Figure 3**

7. Use the handle bar of the bike to add pressure and push firmly until the upper notches slip over the upper spools. **Figure 3**

Check that the notches in left and right brackets are fully seated on the upper and lower spools before riding the motorcycle.

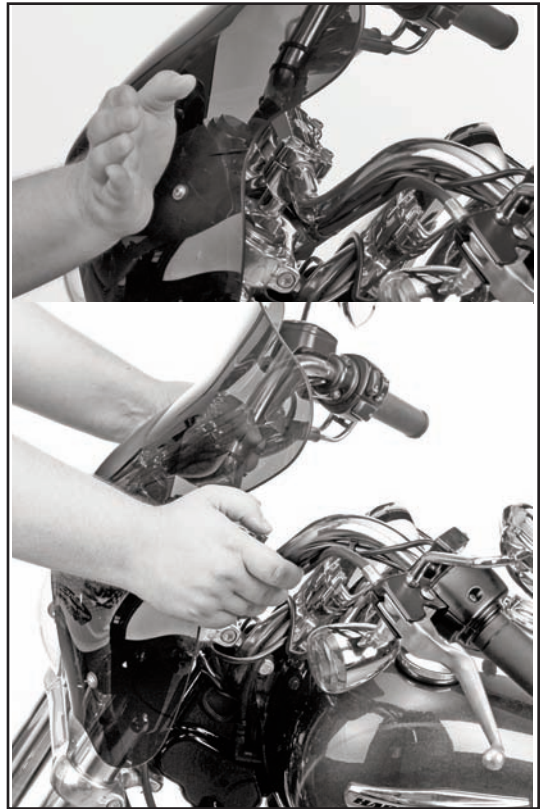


Figure 3





Check clearance of fairing to the motorcycle's handlebar and cables. Check for clearance at fork lock left and right. Make adjustments if necessary.

To Remove Your Fairing

8. Follow the installation steps in reverse order. A firm pull on the upper mount point of the fairing will release the shield from the upper spools (while pivoting on the lower spools), at which point the shield can be lifted from the lower spools.

ADJUSTMENT

This Wave Fairing has a range of rake angle adjustment. Adjusting the shield while it is mounted to the motorcycle will ensure the left and right sides are even. Use a 7/16" box wrench to loosen the cap nuts. Adjust the left and right brackets equally. **Tighten Cap Nuts securely (72 in-lbs or 8 Nm) (7/16" Box Wrench) Figure 4**

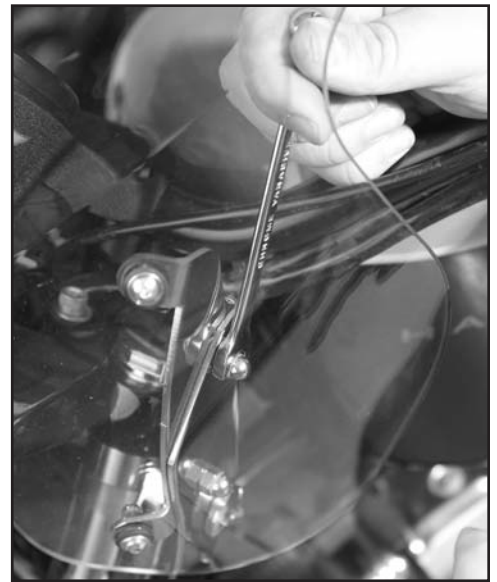


Figure 4 Photo, taken with clear shield on an XL



MAINTENANCE

Wash with a clean soft cloth, plenty of warm water and, if necessary, a non-abrasive soap such as dishwashing liquid. Flannel or soft chamois make good cleaning cloths. Do not allow brake fluid, alcohol, or strong solvents to contact the screen.

Shield Wash N1401-01

National Cycle Windshield Wash Part number N1401-01 is recommended for everyday cleaning. Product is supplied with a handy travel size container and rag for easy storage on the motorcycle.

RainZip® N1410-01

National Cycle offers RainZip rain repellent treatment. RainZip is a hydrophobic treatment that causes water to bead up when it hits the fairing's surface. So at 40 mph the wind rolls the water off. RainZip is formulated at National Cycle for our Quantum Hardcoated polycarbonate windscreens but is safe for all fairings. RainZip comes in a 3-oz. bottle and includes an application cloth and micro fiber polishing cloth. Inquire with your local dealer or visit: www.nationalcycle.com



WARNING

Never ride your motorcycle with loose accessory mounting hardware. Check the hardware for tightness regularly.

Today's motorcycles are built with enough frame rigidity to withstand the moderate loads imposed on them by the foreseeable addition of an accessory(ies). If an accessory(ies) adversely affects your motorcycle's stability, immediately remove the accessory(ies). Do not ride a motorcycle that exhibits unsafe handling traits.

Have experienced service personnel correct any problem before riding with the accessory(ies) installed. For further questions concerning handling problems associated with an accessory(ies), contact your dealer, motorcycle manufacturer, or accessory manufacturer.

Sunlight reflected off the inside curvature of the windscreen can, at certain times of day, cause extreme heat buildup on the motorcycle's instruments and possibly even melt them. Exercise care in parking to avoid this. Park your motorcycle facing the sun or place an opaque object over this area.



National Cycle 3-Year Limited Warranty

Register your windshield on Line at: www.nationalcycle.com/register.html

National Cycle hereby warrants to the original registered owner of a National Cycle polycarbonate windshield for a period of three years from the date of purchase against breakage. This limited warranty is expressly limited to the replacement of the polycarbonate windscreen. This limited warranty does not include scratches, coating failure, cosmetic wear and tear, replacement of hardware, or any consequential damages or expenses including labor cost of installation, removal and/or replacement, inconvenience, inbound freight expenses or damage to any other component of the motorcycle or any other accessories. Certain chemicals, generally known as acidic hydrocarbons, are known to cause polycarbonate damage and will not be covered under this limited warranty. Please refer to the cleaning instructions supplied with all National Cycle windshields.