



YOSHIMURA

RESEARCH & DEVELOPMENT OF AMERICA, INC.

5420 DANIELS STREET STE A, CHINO CA, 91710 · (800)634-9166 · (909)628-4722 · FACSIMILE (909)591-2198

www.yoshimura-rd.com

OFF-ROAD PERFORMANCE EXHAUST SYSTEM

**2006-2008
Kawasaki
KX450F**

2445703

STAINLESS STEEL SLIP-ON SYSTEM WITH ALUMINUM SLEEVE

NOTE: THIS SYSTEM IS DESIGNED FOR USE IN CLOSED COURSE COMPETITION AND IS NOT INTENDED FOR ANY OTHER USE.



THIS PRODUCT IS DESIGNED FOR USE IN CLOSED COURSE RACING AND IS NOT INTENDED FOR ANY OTHER USE.



CAUTION: The muffler packing on this system **MUST** be replaced every 8-10 hours of use, or every 1-2 motos. Failure to follow recommended muffler re-packing interval can cause muffler damage and may void the warranty.



NOTE: IN THE STATE OF CALIFORNIA, IT IS ILLEGAL TO MODIFY THE EMISSION CONTROL SYSTEM. WHICH INCLUDES THE CARBURETORS OF ANY VEHICLE.

Caution: Exhaust system may be extremely hot. Let motorcycle cool down before beginning installation.

Note: Read through all instructions before beginning installation.

Tools Needed:

8mm, 10mm, and 12mm Sockets
11mm (7/16") Deep Socket
Ratchet Wrench and Extension
Torque Wrench

Installation Steps:

- 1 Remove right rear number plate (see Fig. 1 for fastener locations).
- 2 Remove stock muffler (see Fig. 2 for fastener locations).
- 3 Install supplied rubber grommet into muffler mounting bracket. Install aluminum insert into rubber grommet. Make sure that the shoulder of the aluminum insert faces toward the frame (see Fig. 3).
- 4 Slip stainless steel exhaust clamp over Yoshimura tailpipe and install tailpipe with muffler assembly onto stock header.

NOTE: Gasket is not used between the header and tailpipe.

- 5 Bolt tailpipe to chassis mount using supplied 25mm bolt and spacer. Spacer will be positioned between tailpipe bracket and subframe mounting tab. Leave loose.
- 6 Mount muffler to stock muffler mount using supplied 30mm bolt and washer.
- 7 Torque muffler mount and chassis mount bolt to 2.5 kg-m (18 lb-ft).
- 8 Torque exhaust clamp to 1.25 kg-m (9 lb-ft).
- 9 It is recommended that the muffler and tailpipe be wiped down with rubbing alcohol to remove oil and fingerprints. This will help prevent tarnishing of the finish after the exhaust is heated up.
- 10 Reinstall number plate and check for clearance.
- 11 Check for proper clearance between new exhaust system and rear suspension (i.e. tire, swing-arm, brake, etc). If any problem is found, please carefully follow through the installation steps again. If problem still persists, please call Yoshimura tech department at (800)634-9166.

NOTE: After starting motorcycle, it is normal for a new exhaust system and muffler to emit smoke until oil residue burns off.



Fig. 1

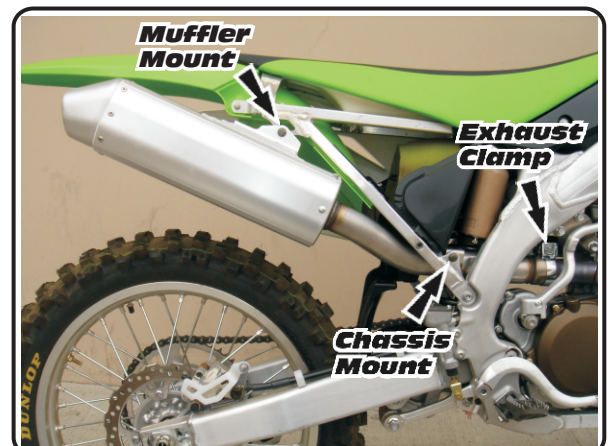


Fig. 2

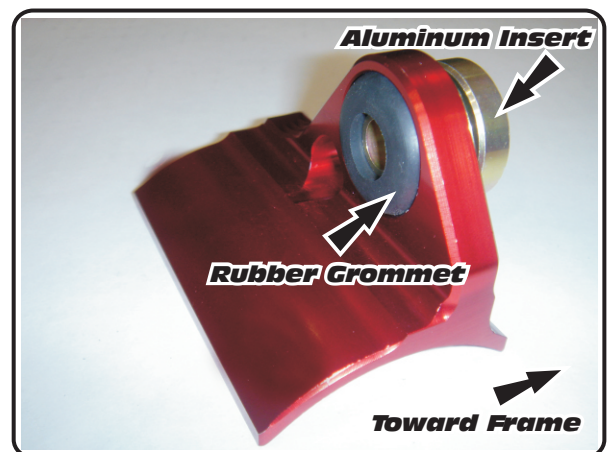
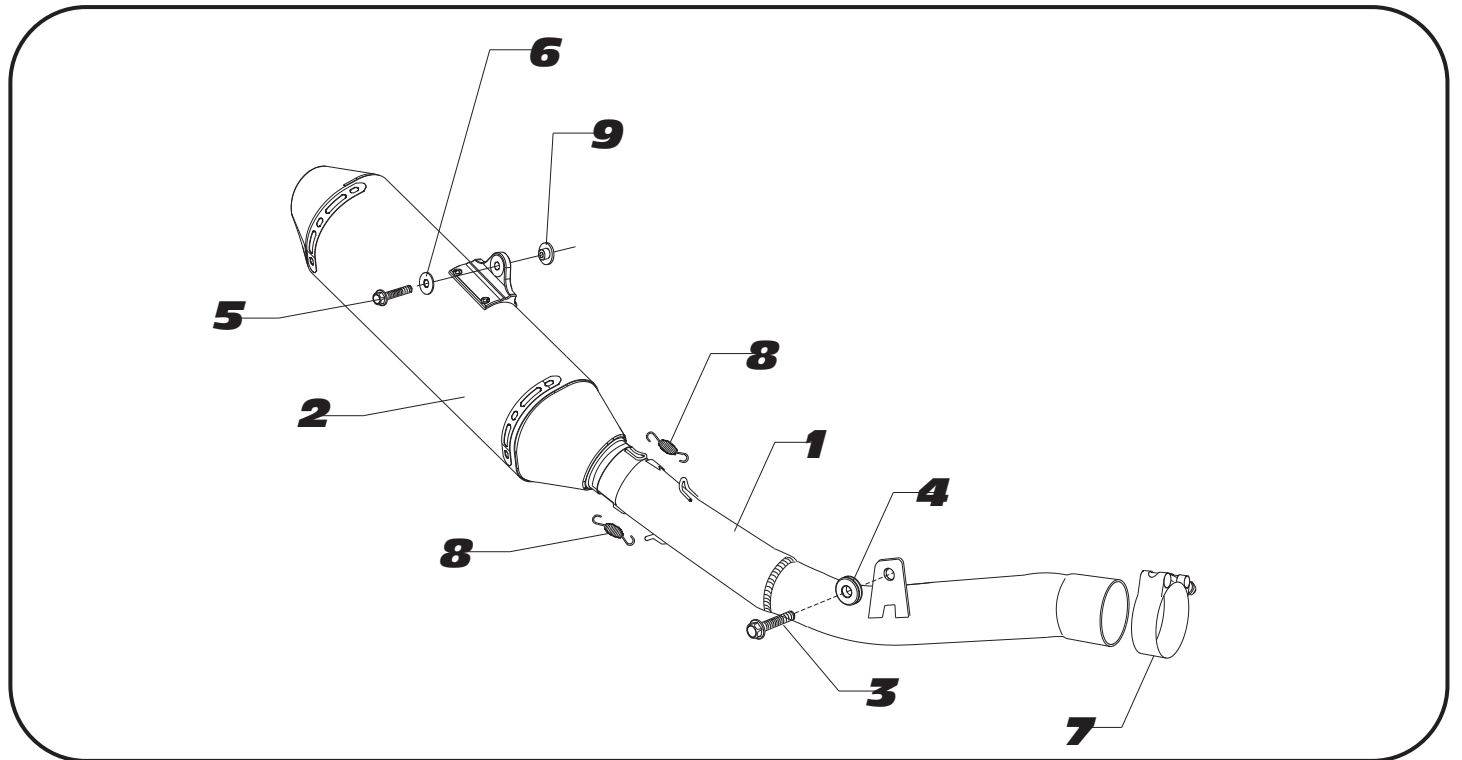


Fig. 3

#2445703



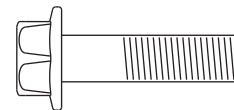
Parts Diagram

NO.	DESCRIPTION	QTY	PART #
1	Yoshimura Stainless Steel Tailpipe	1	2445-152
2	Yoshimura Race Muffler	1	2445503-RMA
3	8mm X 25mm Bolt	1	M8X25H
4	Aluminum Spacer	1	7X25SPC
5	8mm X 30mm Bolt	1	M8X30H
6	Large 8mm Washer	1	8MMWASHERL
7	Stainless Steel Collector Clamp	1	22057
8	Small Exhaust Springs	2	RACE-SPX-1
9	Aluminum Insert for Rubber Grommet	1	ALS-002
**	Rubber Grommet	1	Z1022
**	Yoshimura Spring Puller Tool	1	ST-200
**	Yoshimura Vinyl Sticker	1	17029

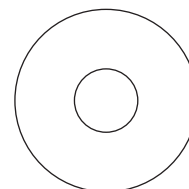
Nuts and Bolts Guide (Actual Size):



8mm x 30mm
Flange Hex Bolt



8mm x 25mm
Flange Hex Bolt



8mm Large Flat Washer



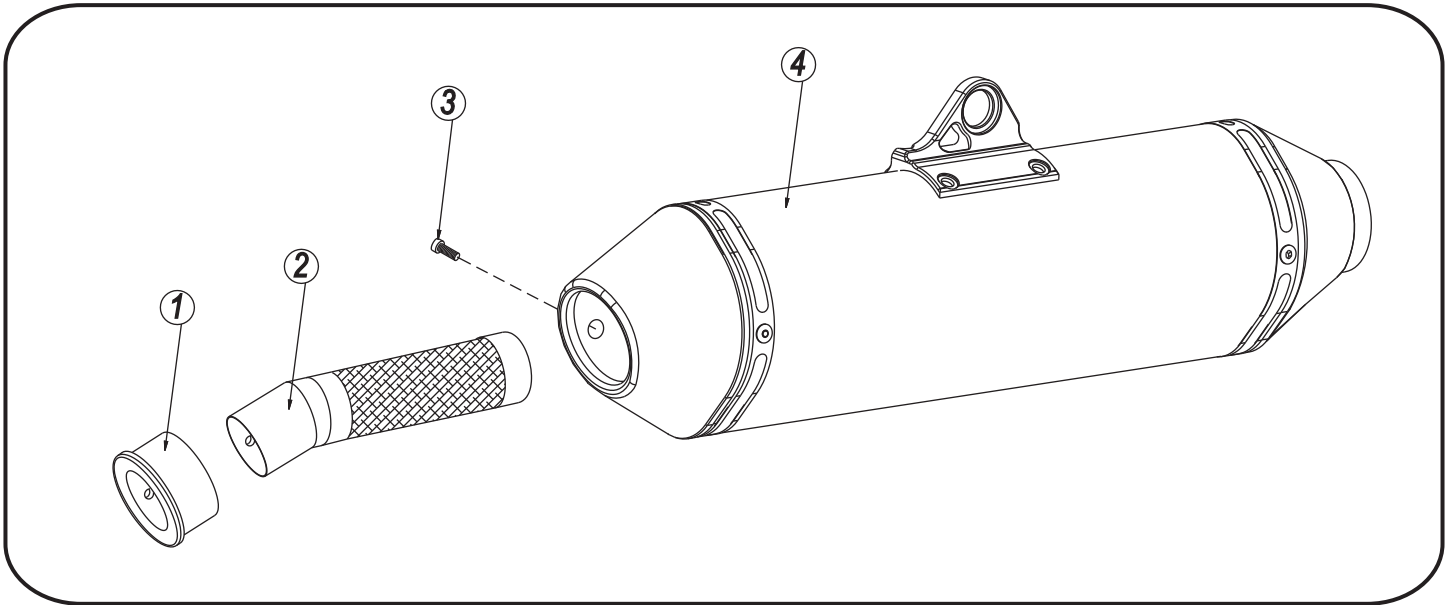
YOSHIMURA

RESEARCH & DEVELOPMENT OF AMERICA, INC.

5420 DANIELS STREET SUITE A, CHINO, CA 91710 · (800)634-9166 · (909)628-4722 · FACSIMILE (909)591-2198

www.yoshimura-rd.com

Spark Arrester Cleaning Information



Parts Diagram

Caution: *Muffler can be extremely hot. Let muffler cool down before removing spark arrester.*

Note: *Read through all instructions before beginning disassembly.*

Tools Needed:

- 3mm Allen Key
- Wire Brush
- Pair of Gloves
- Safety Glasses

Cleaning Steps:

- Using a 3mm Allen key, remove the bolt that secures the aluminum ring and spark arrester to the muffler (see Parts Diagram for location).
- Remove the spark arrester from the muffler.

NO.	DESCRIPTION	QTY
1	Aluminum Ring	1
2	Spark Arrester	1
3	Spark Arrester Securing Bolt	1
4	Muffler Assembly	1

- Using a wire brush, remove carbon deposits from spark arrester screen. Inspect the screen for excessive wear or damage. If spark arrester is excessively worn or damaged, the spark arrester must be replaced. Cleaning and inspection should be performed after every 60 hours of use.

CAUTION: *Gloves and safety glasses should be worn while cleaning spark arrester.*

- Re-install spark arrester and aluminum ring. Torque the spark arrester securing bolt to 1.0 kg-m (7.3 lb-ft).

NOTE: *It is recommended that a low strength "Loc-tite" is used on the spark arrester securing bolt.*