

CHROME SLASH EXHAUST TIPS

541

THANK YOU FOR CHOOSING CRUSHER!

PROTECT YOURSELF AND OTHERS FROM POTENTIAL INJURY AND PROPERTY DAMAGE OR LOSS. PAY CLOSE ATTENTION TO ALL INSTRUCTIONS, WARNINGS, CAUTIONS, AND NOTICES REGARDING THE INSTALLATION, USE, AND CARE OF THIS PRODUCT.

⚠ WARNING

THIS INDICATION ALERTS YOU TO THE FACT THAT IGNORING THE CONTENTS DESCRIBED HEREIN CAN RESULT IN POTENTIAL DEATH OR SERIOUS INJURY.

NOTICE

This indication alerts you to the fact that ignoring the contents described herein may negatively affect product performance and functionality or damage the product itself or the product to which it is being attached.

ENSURE THAT THE FOLLOWING PARTS HAVE BEEN INCLUDED IN THE KIT:

- 2 Chrome Slash Exhaust Tips
- 2 Spacer Rings—**FOR USE ON SLIP STREAM MUFFLERS**
- 1 Hardware Kit Containing:
 - 4 1/4"-20 X 5/8" Button Socket Cap Screws
 - 6 Step Washers—**FOR USE ON SLIP STREAM MUFFLERS**
 - 6 1/4"-20 X 5/8" Socket Head Cap Screws—**FOR USE ON SLIP STREAM MUFFLERS**
- 1 Installation Instructions

SUGGESTED TOOLS:

Socket set with ratchet, set of combination wrenches, set of hex wrenches, Loctite 242 (Blue) or equivalent threadlocker

NOTICE

These installation instructions contain important information. Ensure that the end user receives this copy and is aware of its importance for future use.

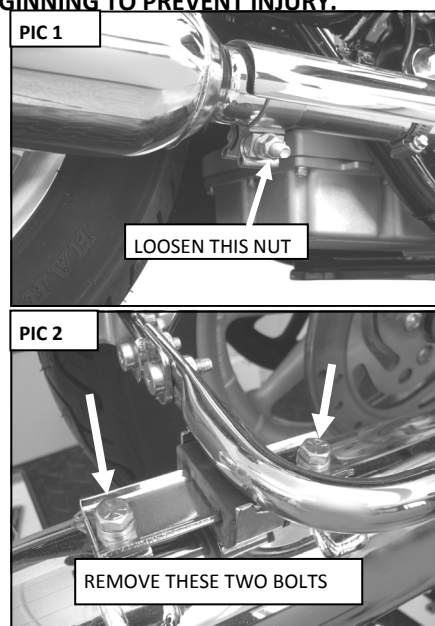
⚠ WARNING

INSTALLATION REQUIRES CONTACT WITH THE EXHAUST SYSTEM. ENSURE THAT THE EXHAUST SYSTEM HAS FULLY COOLED BEFORE BEGINNING TO PREVENT INJURY.

- STEP 1** Read and understand all **STEPS** in the instructions before starting the installation. Park the motorcycle on a hard, level surface and turn off the ignition. Allow the engine and exhaust system to cool.
- STEP 2** Remove the saddlebags and set them aside.
- STEP 3** Loosen the large clamp shown in **PIC 1** enough to slide it forward and off the muffler.
- STEP 4** Remove the two fasteners shown in **PIC 2**. set them aside, they will be re-used.
- STEP 5** Remove the muffler; twist and pull the muffler until it slides off the head pipe.

NOTE:

A few drops of a penetrating oil applied near head pipe/muffler union will aid in removal.



STEP 6 Refer to **PIC 3**. Remove the two button socket cap screws from the underside of the muffler. These go through the body to the baffle on the Slip Stream mufflers.

STEP 7 Refer to **PIC 4**. The tip is attached to the baffle from the inside with three socket head cap screws and cannot be removed until the baffle is partially out of the body. To pull the baffle from the muffler, you may need to use a slide hammer with a hook end or fabricate a hook tool to pull the baffle out.

NOTE: If you do not feel comfortable or up to this type of task, contact a trained technician to partially remove the old baffle.

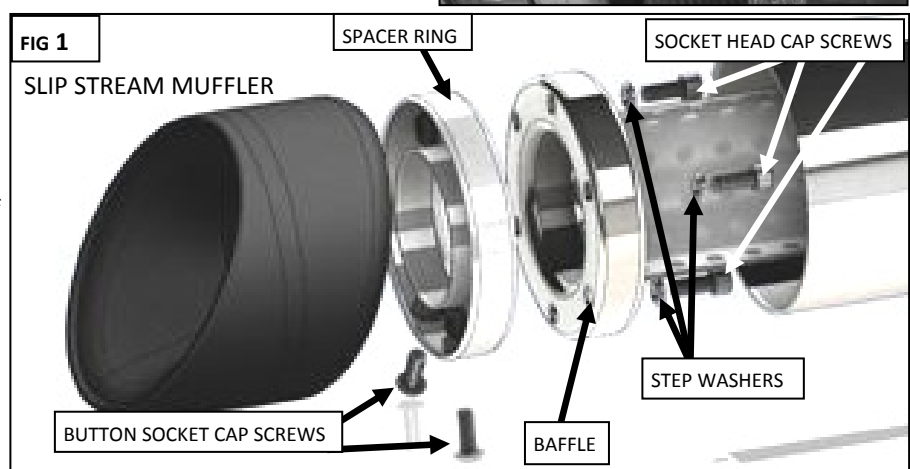
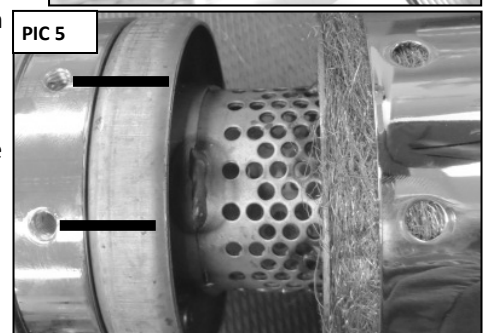
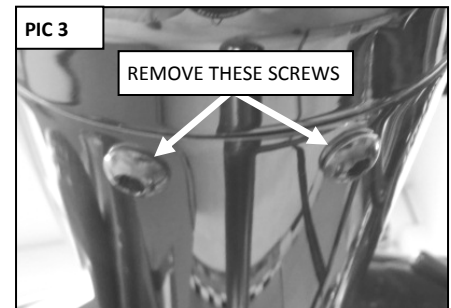
STEP 8 Once the baffle has been partially pulled out and the tip has been removed, attach one of the included spacer rings to the end of the baffle by lining up the three non-threaded holes in the end of the baffle with the three threaded holes in the Spacer Ring.

Refer to **FIG 1**. Secure with the provided 1/4"-20 X 5/8" Socket Head Cap Screws and step washers. Install the baffle assembly back into the muffler while aligning the two weld nuts on the side of the Spacer Ring with the holes in the muffler body. (It may help with installation to draw a line from the threaded holes on the side of the Spacer Ring across the side of the baffle. This will allow you to make sure the threaded holes line up with the holes on the muffler body when the baffle is slid back into the body. **PIC 5**)

Attach the new Slash Tip to the muffler by sliding the Tip on the muffler and aligning the two holes in the bottom of the Tip with the holes in the muffler body and weld nuts on the spacer ring.

Place a drop of Blue Loctite on two of the included 1/4"-20 X 5/8" Button Socket Cap Screws and insert them through the Slanted Tip, through the muffler body and thread them into the spacer ring. Tighten securely.

STEP 9 Repeat **STEPS 3 through 8** for the other muffler.



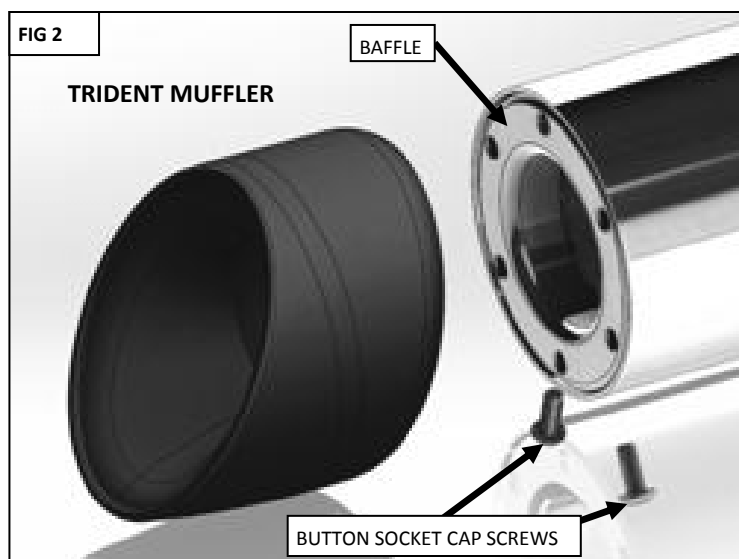
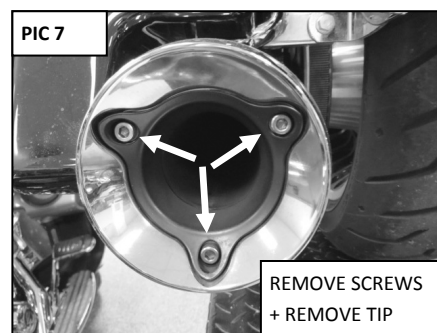
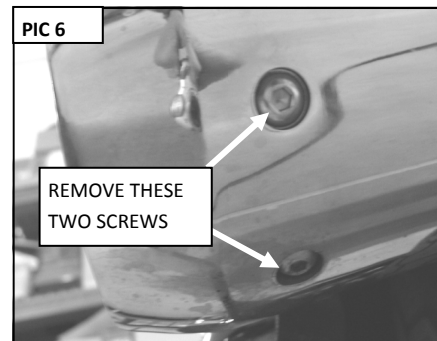
- STEP 10** Slide a muffler onto the head pipe. Make sure the muffler goes onto the head pipe past the ends of the expansion slots, the threaded weldment is to be facing up.
- STEP 11** Reinstall the two fasteners removed in **STEP 4**; you may need to adjust the position of the muffler to get the threaded holes to align. Leave the fasteners finger tight for now.
- STEP 12** Realign the large clamp loosened in **STEP 3** and fully tighten.
- STEP 13** Tighten the two fasteners from **STEP 11**.
- STEP 14** Repeat **STEP 10 through STEP 13** for the other muffler.
- STEP 15** Reinstall the saddlebags.

TRIDENT TIP PROCEDURE:

- STEP 16** Remove the saddlebags and set them aside.
- STEP 17** Refer to **PIC 6**. Remove the two button socket cap screws from the underside of the muffler. These go through the tips, then the body to the baffle on the Trident mufflers.
- STEP 18** Refer to **PIC 6**. Remove the three socket head cap screws that secure the tip to the baffle and remove the tip from the body.
- STEP 19** Attach the new Slash Tip to the muffler by sliding the Tip on the muffler and aligning the two holes in the bottom of the Tip with the holes in the muffler body and weld nuts on the baffle.

Place a drop of Loctite 242 (Blue) on two of the included 1/4"-20 X 5/8" Button Socket Cap Screws and insert them through the Slash Tip, through the muffler body and thread them into the baffle. **FIG 2** Tighten securely.

- STEP 20** Repeat **STEP 18 through STEP 20** for the other muffler.
- STEP 21** Reinstall the saddlebags.



NOTICE

It is the end user's responsibility to ensure that all fasteners (including pre-assembled) are tightened before operation of the motorcycle. Kuryakyn will not provide warranty coverage on products or components lost or damaged due to improper installation or lack of maintenance. Periodic inspection and maintenance are required on all fasteners.

EXHAUST CARE: KÜRYAKYN DOES NOT PROVIDE WARRANTY COVERAGE ON DISCOLORED EXHAUST PRODUCTS!

Proper tuning is important. Carbureted bikes should be re-jetted and fuel injected bikes should be tuned with a TTS MasterTune tuning system (calibrations available at www.kuryakyn.com) by an experienced tuner, on a dyno, with an exhaust gas analyzer.

2007 and up Harley-Davidson Twin Cam engines run especially lean combined with retarded ignition timing. Lean conditions and/or retarded ignition timing will cause high exhaust temperatures and discolor chrome exhaust. Discoloration is not a defect in chrome.

Avoid long periods of idling as this can cause discoloration. All chrome exhaust systems will eventually discolor.

Make sure there are no exhaust leaks at the junction of the exhaust pipes and cylinder heads. We recommend replacing the gaskets with CRUSHER™ - Cometic exhaust gaskets, P/N 482.

Make sure there are no intake leaks. Intake leaks will cause a lean condition and engine overheating leading to discoloration. Chrome discoloration is a result of heat. The more heat to which the chrome is exposed, the quicker and more severe the discoloration.

When installing new chrome exhaust, make sure your hands are clean and free of grease and oil. After installation, thoroughly clean pipes with a soft clean cloth and cleaning solvent that will leave no residue (glass cleaner, alcohol, ammonia, etc...) before starting the motorcycle.

LIMITED WARRANTY

Küryakyn warrants that any Crusher products sold hereunder, shall be free of defects in materials & workmanship for a period of one (1) year from the date of purchase by the consumer excepting the following provisions:

1. Küryakyn shall have no obligation in the event the customer is unable to provide a receipt showing the date the customer purchased the product(s).
2. The product must be properly installed, maintained & operated under normal conditions.
3. Küryakyn shall not be liable for any consequential & incidental damages, including labor & paint, resulting from failure of a Küryakyn product, failure to deliver, delay in delivery, delivery in nonconforming condition, or for any breach of contract or duty between Küryakyn & a customer.
4. Crusher products are often intended for use in specific applications. Küryakyn makes no warranty if a Küryakyn product is used in applications other than intended.
5. Crusher electrical products are warranted for one (1) year from the date of purchase by the consumer. L.E.D.'s contained in components of Küryakyn products will be warranted for defects in materials & workmanship for 3 years from the date of purchase where as all other components shall be warranted for one (1) year.
6. Exhaust systems are warranted for manufacturing defects only. There is no warranty on exhaust pipes & mufflers with regard to any discoloration. Discoloration or "blue-ing" is caused by tuning characteristics, exhaust timing, carburetor jetting, overheating, etc. & is not caused by defective manufacturing.
7. Küryakyn makes no warranty of any kind in regard to other manufacturer's products distributed by Küryakyn. Küryakyn will pass on all warranties made by the manufacturer & where possible, will expedite the claim on behalf of the customer, but ultimately, responsibility for disposition of the warranty claim lies with the manufacturer.
8. Merchandise purchased directly from Internet auction sites or any other third party seller is considered sold as is & shall not carry a Küryakyn warranty. All warranty claims must be directed to the original seller. If unsure please contact the seller to verify they are an authorized Küryakyn retailer.

RETURN POLICY

Merchandise determined to be defective may be returned up to one year from the date of purchase. Returns must be processed through original seller. Returned merchandise for any other reason other than warranty claims must be in like new condition & subject to a 20% restocking fee. All returns are subject to inspection for determination of full or partial credit. Any returned part that shows evidence of being used or installed contrary to manufacturer's instructions, &/or subjected to improper handling, packaging or return shipping by the customer, will not be eligible for exchange, refund or warranty consideration. All returned electrical items will be inspected & tested. If electrical item is deemed functional, no credit will be issued & item will be returned. All sales are final on discontinued or closeout merchandise.

RETURN INSTRUCTIONS

Contact one of our prompt, courteous Customer Service representatives toll free at 866-295-5759. Be sure to have the following information available when you call:

Name
Part number(s) to be returned
Copy of original invoice
Reason for return

1. Obtain R.M.A. number which shall remain active & valid for 60 days. (Important: Issuance of R.M.A. does not represent an authorized credit.)
2. Carefully package merchandise to avoid damage during shipment. Depending on its condition, original packaging may not be sufficient.
3. Ship only those items for which the R.M.A. has been issued.
4. Write the R.M.A. number prominently on the outside of package.
5. Ship package freight PREPAID (C.O.D.s will not be accepted) to:

Kuryakyn 454 County Road V V Somerset, WI 54025