



ROLAND SANDS DESIGN®

ASSEMBLY INSTRUCTIONS

0048-0809

REVISION F

10/20/11

PAGE 1

VENTURI AIR CLEANER

For Fuel injected models, you must recalibrate the ECM or buy an aftermarket fuelpack from Vance & Hines to properly calibrate your new intake. Failure to do so may result in engine damage.

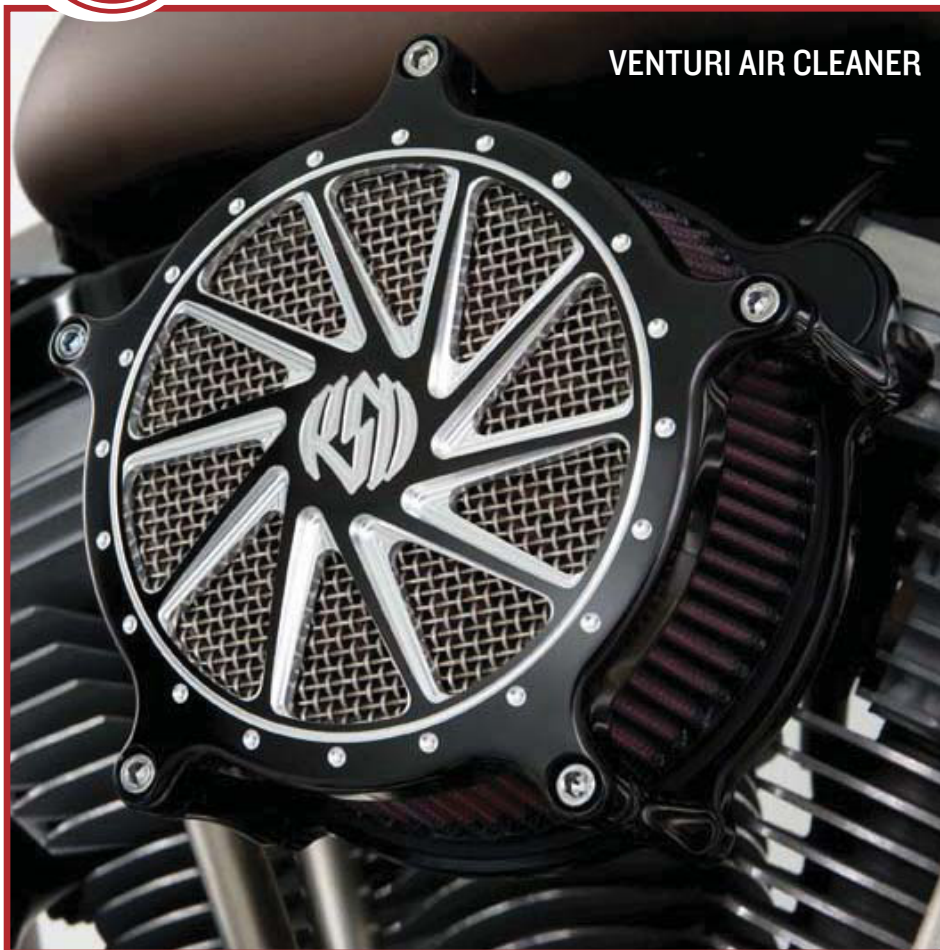
NOTE: Inserts are required for use with 1993-1999 HD Evolution applications.

To install inserts thread a 3/8-16 bolt through the insert and thread both the bolt and insert completely into the breather hole then remove the 3/8" bolt. Once the inserts are installed you can begin air cleaner installation.

NOTE: Upon assembly use blue 243 loctite on all fasteners. Some models may require use of 3/8-16 to 1/2-13 thread reducers (supplied).

1. Turn your motorcycle off. Extinguish all cigarettes and open flames.
2. Remove existing air cleaner and breathers. (Refer to HD owners Manual)
3. Install 2 breathers (7) and backing plate (5) with 2 slotted breather bolts (9) using blue loctite 243, torque to 15 ft. lbs. Install three 1/4-20 bolts (11), torque to 8 ft.-lbs.

- NOTE:** For 08/09 FL models reuse throttle body support bracket as shown in Fig. A
4. Install rubber breather tubes (13,14) as shown in Fig. B. They should fit snugly into the machined recesses
 5. Install the secondary plate (6) and ensure that it sits flat and there is no obstruction from the breather tubes below.
 6. Install (4,8,10,12) as an assembly with five spacers (11) using five 1/4-20 x 2 1/2 bolts (2) to backing plate (5), torque to 8 ft. lbs.
 7. Fire that bitch up and go do some laps.



CAUTION !!! - INTENDED FOR OFF HIGHWAY USE ONLY. DOES NOT COMPLY WITH EMISSIONS REGULATIONS

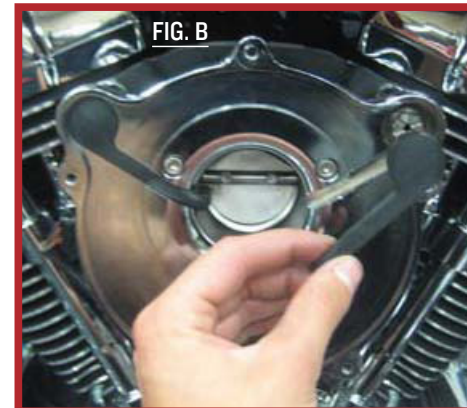
APPLICATION

93-06 Big Twin w/ CV Carb, 02-07 FL w/ Delphi EFI

2001-2012 FXST Softail, 2004-2012 Dyna

2008-2012 FL

1993-2006 Twin Cam w/ S&S E/G Carb



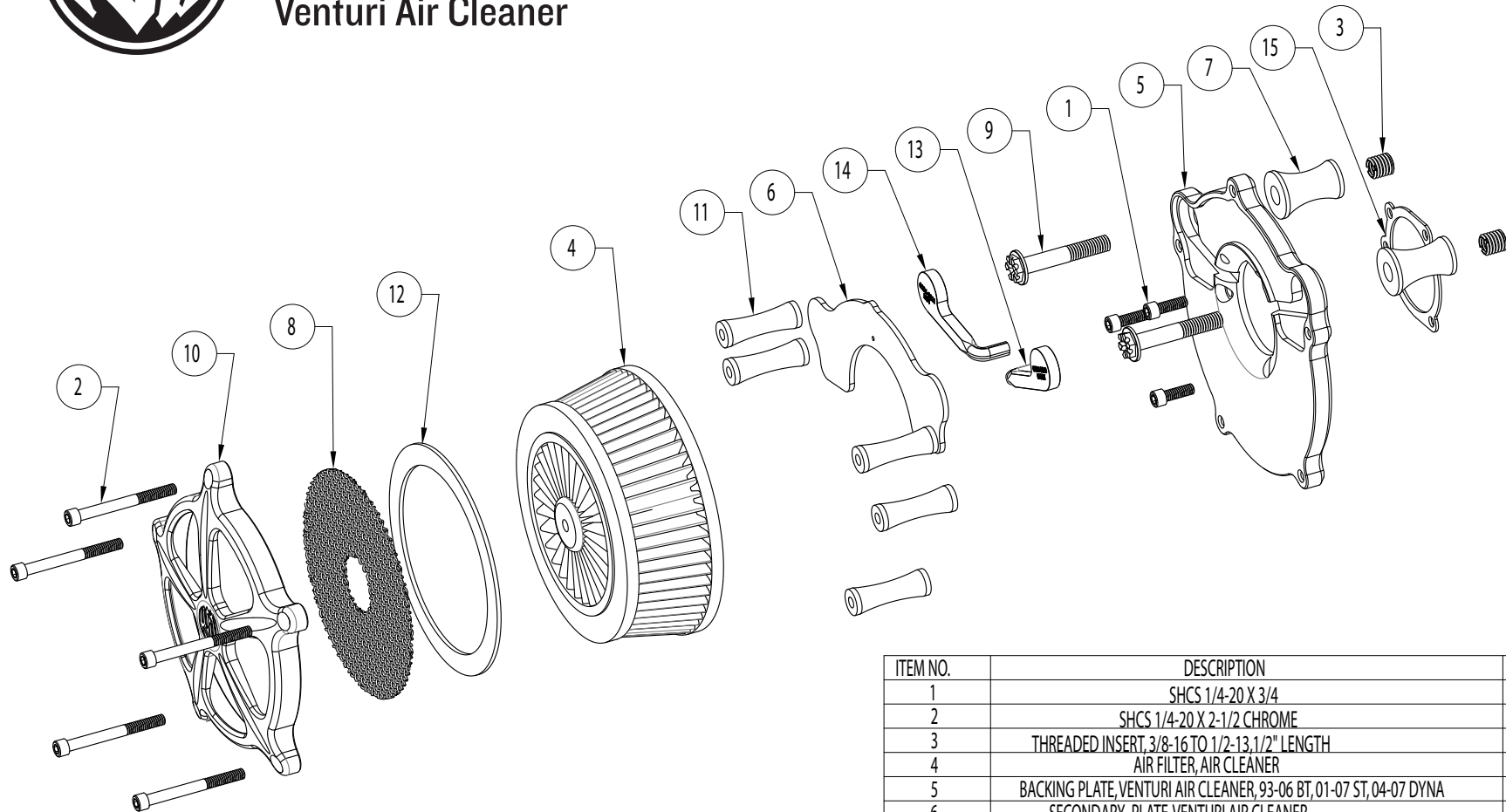


ROLAND SANDS DESIGN

Venturi Air Cleaner

0048-0809 REVISION F 10/20/11 PAGE 2

ASSEMBLY INSTRUCTIONS



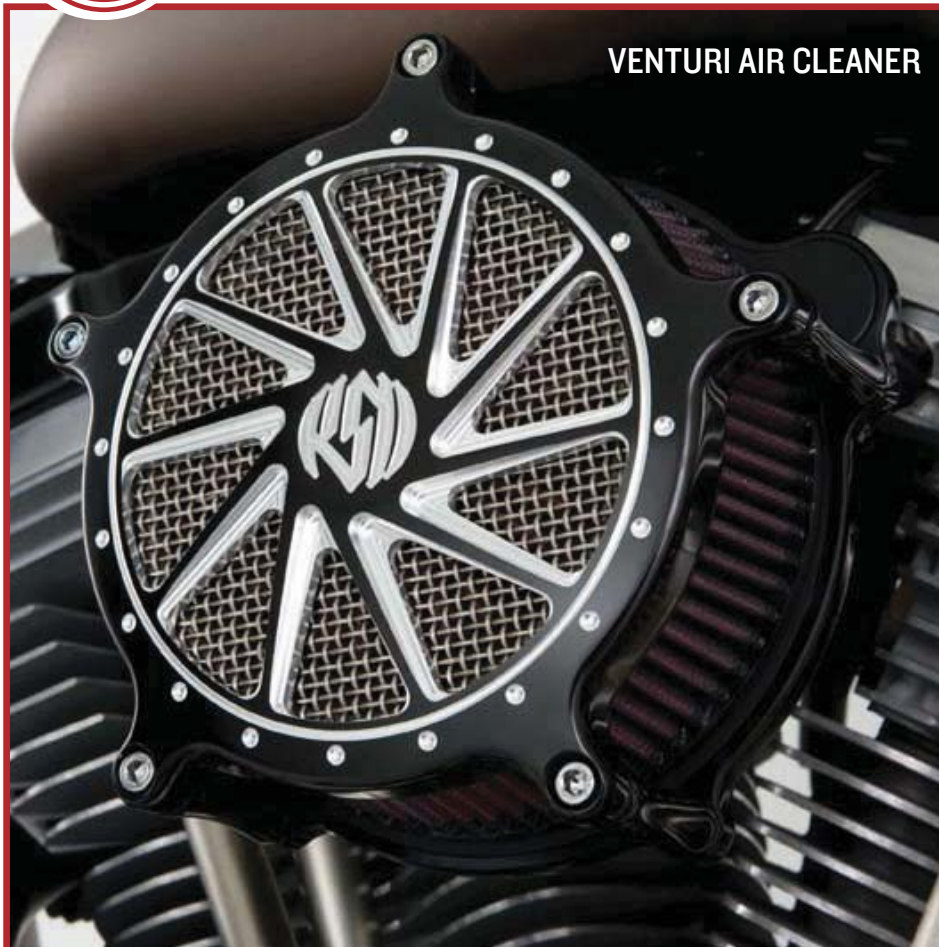
ITEM NO.	DESCRIPTION	QTY.
1	SHCS 1/4-20 X 3/4	3
2	SHCS 1/4-20 X 2-1/2 CHROME	5
3	THREADED INSERT, 3/8-16 TO 1/2-13, 1/2" LENGTH	2
4	AIR FILTER, AIR CLEANER	1
5	BACKING PLATE, VENTURI AIR CLEANER, 93-06 BT, 01-07 ST, 04-07 DYNA	1
6	SECONDARY PLATE, VENTURI AIR CLEANER	1
7	BREATHER STANDOFF, VENTURI AIR CLEANER	2
8	MESH INSERT VENTURI AIR CLEANER	1
9	BREATHER HEX BOLT 3/8-16 X 2-1/4 GRADE 5 CLEAR ZINC	2
10	SUPERVEDTED OUTER, VENTURI SPEED 5 AIR CLEANER	1
11	AIR BOX SPACER, VENTURI AIR CLEANER	5
12	FOAM SPACER, VENTURI AIR CLEANER	1
13	OIL TUBE - RIGHT, 93-06 BT, 01-07 ST, 04-07 DYNA	1
14	OIL TUBE - LEFT, 93-06 BT, 01-07 ST, 04-07 DYNA	1
15	GASKET B-29059-88-062, 93-06 BT, 01-07 ST, 04-10 DYNA	1

CAUTION !!! - INTENDED FOR OFF HIGHWAY USE ONLY. DOES NOT COMPLY WITH EMISSIONS REGULATIONS

For questions pertaining to the installation of this product, please contact our technical department at 1-800-479-4037



VENTURI AIR CLEANER



CAUTION !!! - INTENDED FOR OFF HIGHWAY USE ONLY. DOES NOT COMPLY WITH EMISSIONS REGULATIONS

APPLICATION

1991-2012 SPORTSTER XL, DOES NOT FIT XRI200R MODELS

SPEED 5 - 0206-2002

SPEED 7 - 0206-2005

MISSION - 0206-2013

RONIN - 0206-2016

JUDGE - 0206-2025

DOMINO - 0206-2029

TURBO - 0206-2035

BOSS - 0206-2041

SLAM - 0206-2047

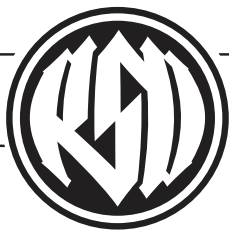
For Fuel injected models, you must recalibrate the ECM or buy an aftermarket fuelpack from Vance & Hines to properly calibrate your new intake. Failure to do so may result in engine damage.

NOTE: Upon assembly use blue 243 loctite on all fasteners.

1. Turn your motorcycle off. Extinguish all cigarettes and open flames.
2. Remove existing air cleaner and breathers. (Refer to HD owners Manual)
3. Install 2 breathers (10) and backing plate (8) with 2 breather bolts (11) using blue loctite 243, torque to 15 ft. lbs.



4. Align the backing plate (8) with the breather bolts (11) then install the three 1/4-20 bolts (1) and gasket (12) and torque to 8 ft-lbs. Note: Aligning the breather bolts with the backing plate will allow easier installation and function of the rubber breather tubes (13 & 14).
5. Install the rubber breather tubes (13 & 14) into the recesses and make sure they form a good seal around the breather bolt head.
6. Install the secondary plate (9).
7. Install (3,4,5,7) as an assembly with the five spacers (6) using five 1/4-20 x 2.5" bolts (2) to the backing plate (8) and torque to 8 ft-lbs.
8. Recalibrate ECM to the supplied values from you exhaust manufacturer.
9. Fire that hot rod up and go do some laps.

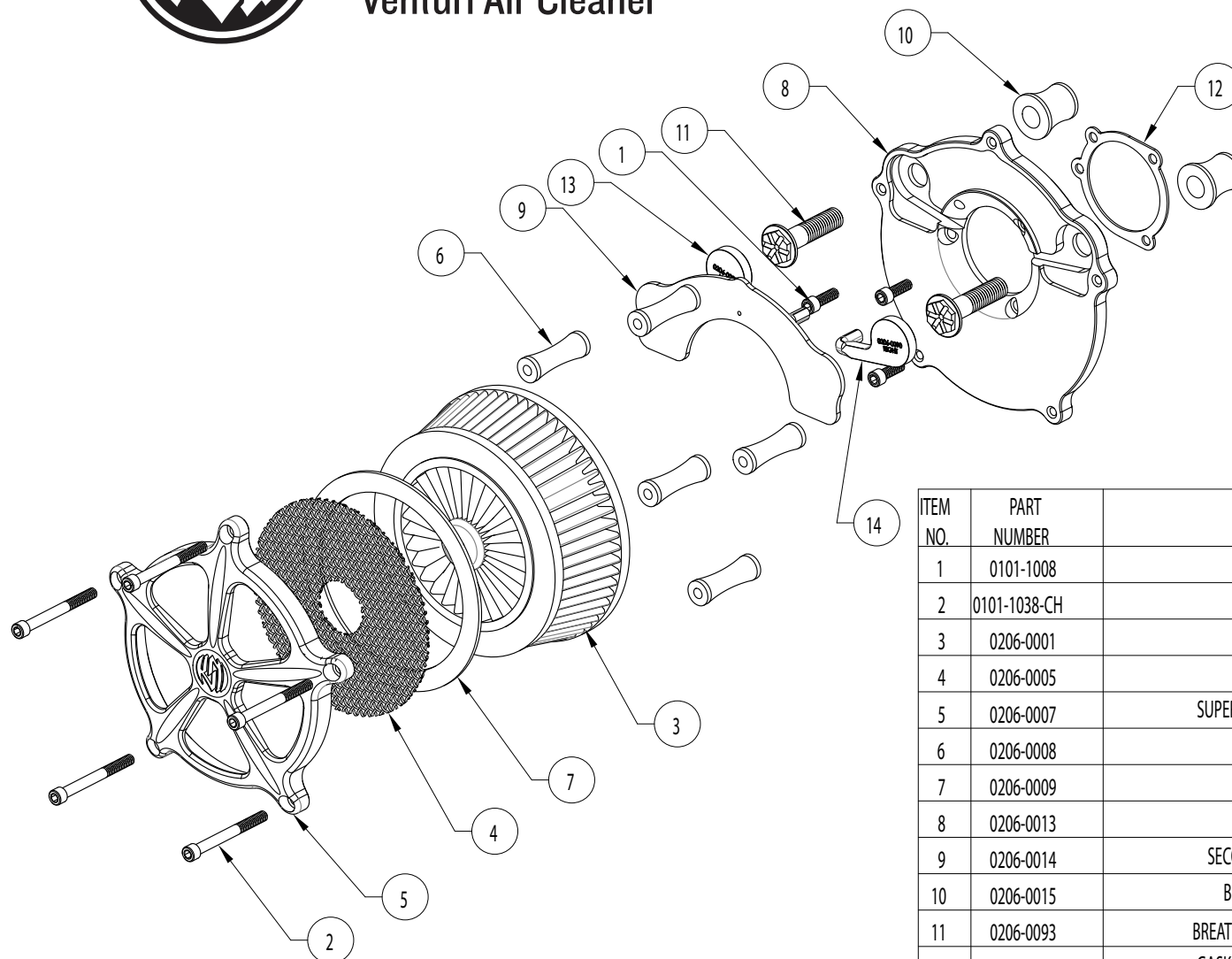


ROLAND SANDS DESIGN

Venturi Air Cleaner

0048-0887 REVISION B 4/27/12 PAGE 2

ASSEMBLY INSTRUCTIONS



ITEM NO.	PART NUMBER	DESCRIPTION	QTY.
1	0101-1008	SHCS 1/4-20 X 3/4	3
2	0101-1038-CH	SHCS 1/4-20 X 2-1/2 CHROME	5
3	0206-0001	AIR FILTER, AIR CLEANER	1
4	0206-0005	MESH INSERT VENTURI AIR CLEANER	1
5	0206-0007	SUPERVENTED OUTER, VENTURI SPEED 5 AIR CLEANER	1
6	0206-0008	AIR BOX SPACER, VENTURI AIR CLEANER	5
7	0206-0009	FOAM SPACER, VENTURI AIR CLEANER	1
8	0206-0013	BACKING PLATE, 91-UP XL SPORTSTER	1
9	0206-0014	SECONDARY FILLER PLATE, 91-UP XL SPORTSTER	1
10	0206-0015	BREATHER STANDOFF, 91-UP XL SPORTSTER	2
11	0206-0093	BREATHER HEX BOLT, 1/2-13 X 2" GRADE 5 CLEAR ZINC	2
12	0206-0039	GASKET B-29059-88-062, 93-06 BT, 01-07 ST, 04-10 DYNA	1
13	0206-0089	OIL TUBE - LEFT	1
14	0206-0090	OIL TUBE - RIGHT	1

CAUTION !!! - INTENDED FOR OFF HIGHWAY USE ONLY. DOES NOT COMPLY WITH EMISSIONS REGULATIONS