



Assembly Instructions



Nostalgia Head Light Relocation Mount

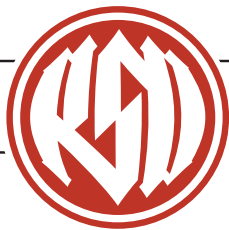
Polished Stainless
Steel hand built in the
USA, relocates your
head light from sky high
to the DL (down low)

Fits all HD type Springer front forks with Shock mount.
0207-2000

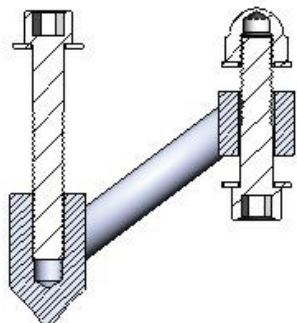
1. Turn your motorcycle off. Extinguish all cigarettes and open flames. If you burn down your garage your old lady is going to be super pissed off.
2. Remove existing HD headlight. (Refer to HD owners Manual)
3. Take the weight off the front wheel of the bike using what ever means necessary. We don't recommend setting the frame on a curb or speed bump for this.
4. Remove lower shock bolt and replace with 1 (#2) 3/8 - 16 x 2 1/4 SHCS and (#3) washer from left side. Place relocation mount on the right side.
5. Install head light with (#1,3,4) 3/8 - 16 x 1 1/2, washers and nut.
6. Once correct light position has been established (see owner's manual again) torque both bolts to 28 ft. lbs.
7. Enjoy your new down low style and a clearer view of the highway. Enjoy...

*Note: Upon assembly use blue 243 loctite on all fasteners

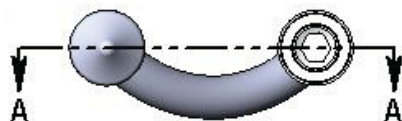
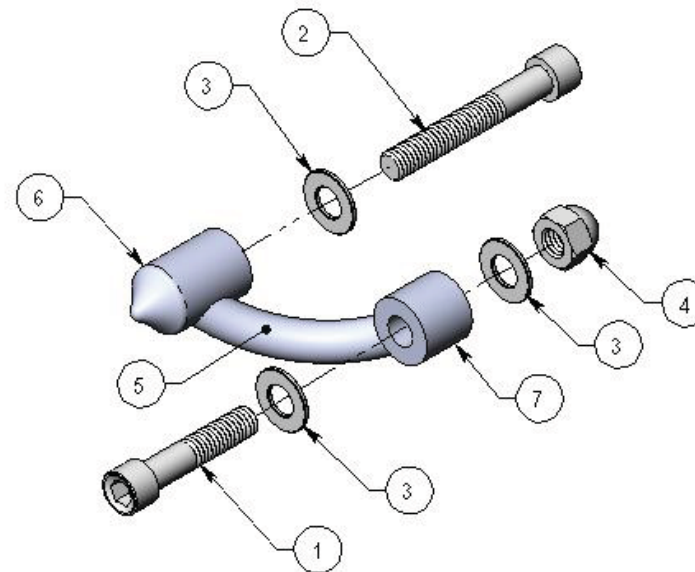
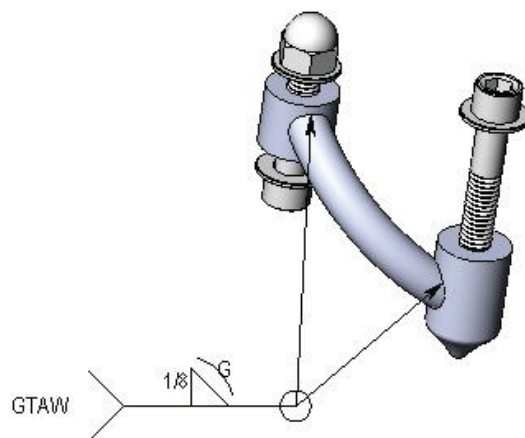




Nostalgia Head Light Relocation Mount



SECTION A-A



NOTES: UNLESS OTHERWISE SPECIFIED

1. ALL FILLET RADII TO BE .016 MAX.

ITEM NO.	PART NUMBER	DESCRIPTION	QTY
1	0101-3011-CH	SHCS 3/8-16 X 1-1/2- CHROME	1
2	0101-3017-CH	SHCS 3/8-16 X 2-1/4 CHROME	1
3	0106-3000-CH	WASHER .41X.81X.06, STEEL FLAT CHROME	3
4	0107-3009-CH	NUT 3/8-16 ACORN LOW PROFILE, CHROME	1
5	0207-0001	1/2" BEND, HEAD LIGHT MOUNT	1
6	0207-0002	MOUNT, HEAD LIGHT MOUNT	1
7	0207-0003	SHOCK MOUNT, HEAD LIGHT MOUNT	1

PARTS LIST