



45-0750F
Installation Instructions
Front Axle Slider Kit

1) **Axle Side:** The large base with the expansion slot will be installed in the hex of the axle itself. To install the base, thread the 8x35mm socket head bolt into the assembly until it is almost tight, leaving a small gap between the halves. Slide the assembly into the round hole of the axle and be sure that it is fully seated against the axle.

Note: occasionally, people damage the axles by hammering them in, and will slightly deform the axle itself. Since our axle sliders are a precise fit, you may need to take a file to remove any raised edges. You will not need to do this on an axle in good condition.

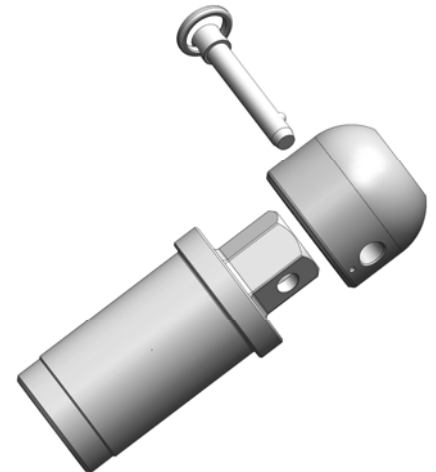
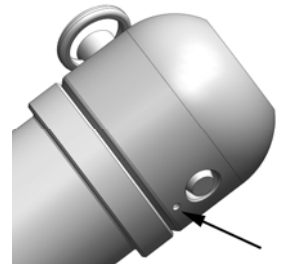
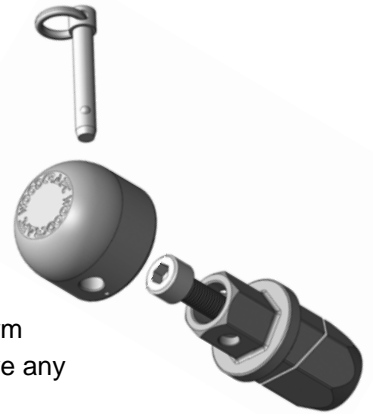
2) Put a 19mm box end wrench on the hex of the assembly and tighten the 8mm allen bolt to lock the assembly in place.

3) Install the plastic top using the removable pin. **Important:** One side of the puck has a small hole drilled beneath the main hole. Install the pin so that the end of the pin with the ball is on the same side as this small hole. The pin should be installed so that the ring is on the top half of the slider.

4) **Nut Side:** Loosen the pinch bolts and remove the stock axle nut. Replace this nut with the base for the axle slider. Tighten the nut (re-use the OEM washer if there is one) and re-tighten the pinch bolts on the bottom of the fork tube.

5) Install the plastic top using the removable pin. **Important:** One side of the puck has a small hole drilled beneath the main hole. Install the pin so that the end of the pin with the ball is on the same side as this small hole.

A note for racers: If your tech inspector wants you to safety wire these (most will not) then you simply need to orient the pins so that the pull on the pin is both clockwise and down (so that it acts to both tighten the bolt and pull the pin into the puck)



105 Baldwinville Rd, Winchendon, MA 01475

978-297-2977

WARNING: Improper installation and/or failure to comply with all warnings and instructions may cause a loss of control and serious injury or death. The motorcycle should be run and thoroughly inspected before use. DO NOT INSTALL OR USE THIS PRODUCT IF YOU ARE UNABLE TO DO SO IN COMPLIANCE WITH ALL INSTRUCTIONS AND WARNINGS. SEEK THE ASSISTANCE OF A TRAINED PROFESSIONAL TECHNICIAN.