

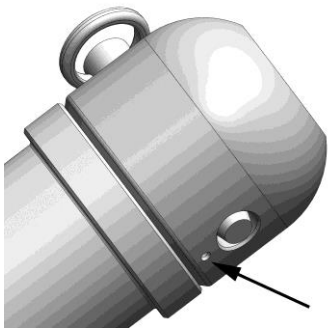
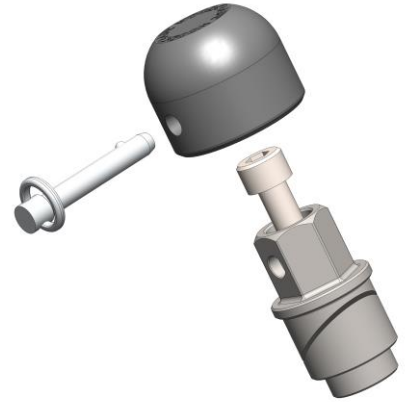


45-0615F
Installation Instructions
Front Axle Slider Kit
Ducati Scrambler

1) **Axle Side:** The large base with the expansion slot will be installed in the axle itself. To install the base, thread the 8x30mm socket head bolt into the assembly until it is almost tight, leaving a small gap between the halves. Slide the assembly into the center hole and be sure that it is fully seated against end of the axle.

Important Note: Sometimes axles are damaged when people hammered them into place. This will slightly deform the axle itself. Since our axle sliders are a precise fit, you will need to file off any raised edges on the inside of the axle. You will not need to do this on an axle in good condition.

2) Tighten the 8mm allen bolt to lock the assembly in place. You should hold the hex with a 19mm six sided socket (not an open end wrench, as this can damage the slider base) while doing this to ensure you can fully lock the axle side in place.

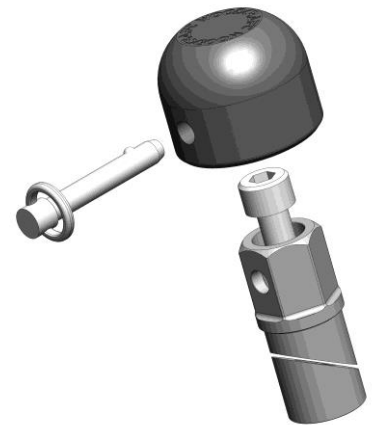


3) Install the plastic top using the removable pin. **Important:** One side of the puck has a small hole drilled beneath the main hole (see picture at left). Install the pin so that the end of the pin with the ball is on the same side as this small hole. The pin should be installed so that the ring is on the top half of the slider.

4) **Nut Side:** Repeat the same procedure as you did in steps 1 and 2. You do not need to remove the axle nut to install the slider.

5) Install the plastic top using the removable pin as per step 3

A note for racers: If your tech inspector wants you to safety wire these (most will not) then you simply need to orient the pins so that the pull on the pin is both clockwise and down (so that it acts to both tighten the bolt and pull the pin into the puck)



105 Baldwinville Rd, Winchendon, MA 01475

978-297-2977

WARNING: Improper installation and/or failure to comply with all warnings and instructions may cause a loss of control and serious injury or death. The motorcycle should be run and thoroughly inspected before use. DO NOT INSTALL OR USE THIS PRODUCT IF YOU ARE UNABLE TO DO SO IN COMPLIANCE WITH ALL INSTRUCTIONS AND WARNINGS. SEEK THE ASSISTANCE OF A TRAINED PROFESSIONAL TECHNICIAN.