

Practice Safe Sound!

Hogtunes products will play much louder than the Original Equipment, which can be a distraction to the rider and/or passenger. Please use caution when adjusting, or playing your stereo at high volume, especially in traffic.

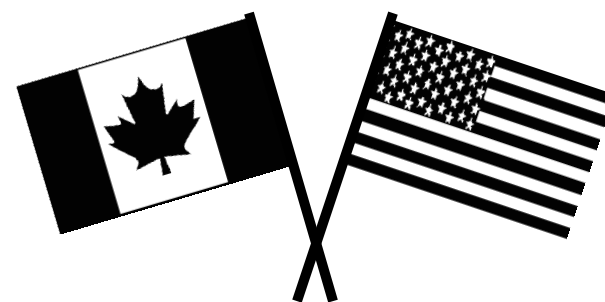
You are a valued customer so please:

Ride Alert
Arrive Alive!

www.hogtunes.com

HOGTUNES

Audio Solutions For The Great American Cruiser



**Designed and Engineered in Canada For
The Great American Cruiser**

Installation Manual

692.2/Lid Kit

*Reading The Manual Before Starting Will Make
This Job Much Easier*

Version 1.1

Thank-you for choosing the Hogtunes Model 692.2/Lid kit! Since positive word of mouth is the best way to grow our business, we want your new system to work as well as it was designed to. If you have any questions or concerns, we are here to help. Email tech@hogtunes.com, or call us during regular business hours (EST) at 705-719-6361. If you still need help, please consider a professional installation by your motorcycle dealer.

Important: The speakers in this kit are 2 ohms (2 Ω) and require an amplifier capable of reliably playing this load. If using an amp other than Hogtunes, please consult the manufacturer to make sure the amp you plan to use is 2 ohm stable! We strive to make the parts perfect, but things can happen. **Please inspect the parts carefully BEFORE paint!**

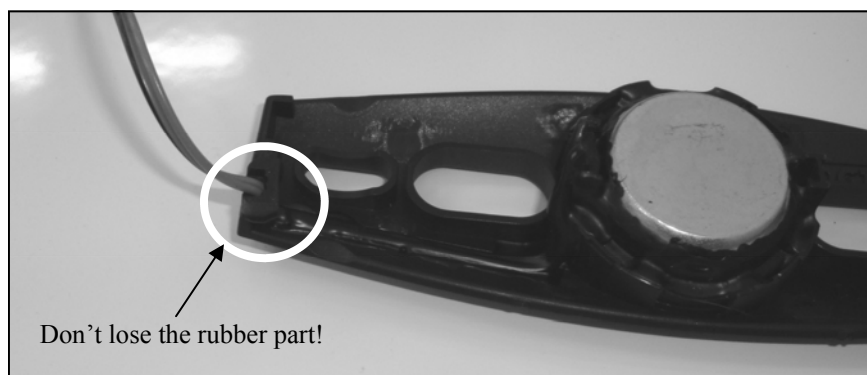
Preparing the lids for paint:

Start by removing the 2 screws on the underside of the lid that secures the grill in place. Lift up slightly on the grill and slide out.

From the magnet side, carefully remove the 2 small wires attached to the woofer that go out to the tweeter.

Remove the 4 screws that secure the woofer to the lid and, and put the woofer aside.

Remove the 2 screws that secure the tweeter bridge to the lid and remove. **Note: there is a small rubber piece as shown in the circle below. This seals the wires for the tweeter pod so please take extra care not to lose this part.**



NOTE: Do not paint the tweeter bridge! The tweeter is permanently attached to the tweeter bridge assembly to make sure nothing obstructs the built in drainage. **In the event of warranty, Hogtunes replaces the tweeter and the bridge as one piece, and therefore assumes zero responsibility for paint!**

Final Notes (Please Read):

The speakers magnet is large, and powerful. Credit cards and electronics can be sensitive to magnets, so please exercise caution in how you pack your saddlebags. Metal objects packed into your bags may end up stuck to the magnet, so please use caution when opening the lids.

The magnet can get hot. Please consider this when packing your saddlebags.

The speakers magnet is covered by a rubber boot. This makes it look cool, but is really there to help protect things inside the saddlebag that may bounce into the magnet.

The woofer portion of the 6x9 was designed to work best with saddlebags empty, or near empty..

Warranty Information:

Hogtunes speakers are warranted for a period of 20 years to the original purchaser. The saddle bag lids are warranted against defects out of the box only. Proof of purchase is required for all warranty claims. **All Warranty claims must be made through the dealer this product was originally purchased from.** Speakers found to be defective during the warranty period will be repaired or replaced (with a product deemed to be equivalent) at Hogtunes sole discretion. Amplifiers will be repaired

What Is Not Covered:

- 1)Any expense related to the removal or re-installation of Hogtunes products.
- 2)Repairs to these products performed by anyone other than Hogtunes.
- 3)Subsequent damage to any other components.
- 4)Any product purchased from a non-authorized Hogtunes dealer.
- 5)Damage to Hogtunes products due to an accident or collision.
- 6)Paint applied to any part, for any reason
- 7) Speaker frames (baskets) that are bent
- 8) Speaker cones that are pierced or cut.

Technical Specifications:

Hogtunes #692.2-AA Speakers

Power Handling:	200 Watts
Frequency Response:	30hz-25Khz
Sensitivity :	96 db 1watt/1meter
Nominal Impedance:	2.0 Ohms

Routing the speaker wire harness:

The long supplied harness with 4 wires has 2-2 pin plugs on one end, and a single 4 pin plug on the other. In all cases, the end with the 4 pin plug will go nearest the amp your using which typically will be your fairing.

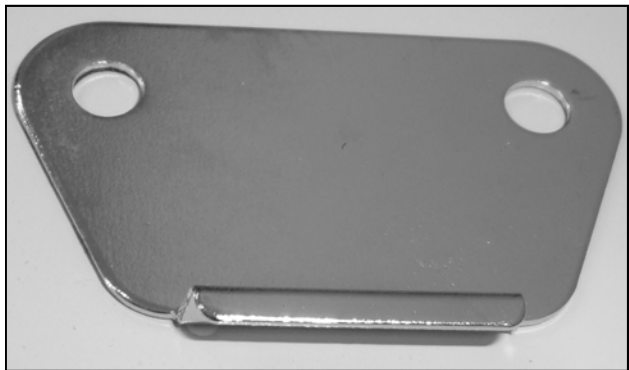
For FLH (Batwing) Models. The harness will pass under the inner fairing where the main wire harness passes through on the brake side of the bike. For FLTR (Road Glide) Models, the harness will pass through the inner fairing where the factory wires pass. Loosen the tank console and run wires up and over the gas tank, but under the tank console. There is a provision on the front of the tank console for wires to pass. Once past the battery, the harness will continue towards the back of the bike along the frame, and when correctly installed, the 2-2pin plugs will be beside the back seat on the brake side of the bike. Secure the harness to the bikes factory harness' using zip ties. Plug the brake side lid in. Run the clutch side under the seat and plug it in.

Wiring the lids to your amp.

The 4 pin connector will plug into Hogtunes NCA 70.2-2 channel amp, or Hogtunes NCA 40.4-4 Channel amp. If your using another brand of amplifier, you will see that the wires near the 4 plug are labeled. Simply cut the plug off and wire the lids to your amp using the labels to identify each wire.

Striker Plates:

Each kit comes 4 new “striker plates” that will be applied on the outside of the lid. Use your factory lids as reference for how and where these go. Like all other adhesive parts in this manual, clean the area first! Also remember that adhesive works best at room temperature or higher.



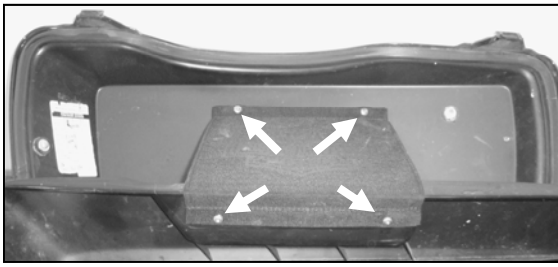
Remove the saddlebag from the bike, and put on a stable padded surface. For obvious reasons, blankets etc on the bench will help protect the paint.



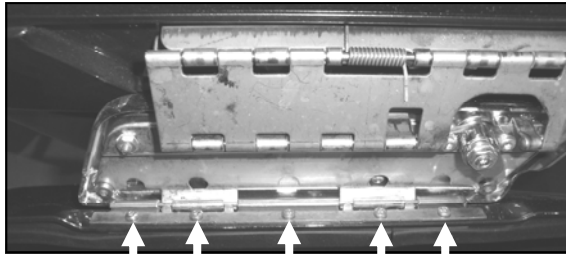
The white circle in the picture above is where a 3/4” (19mm) hole will be drilled. This hole is where the supplied Hogtunes rubber grommet will go, and allow the speaker wire for the lid to pass into the saddlebag. Note: We strongly suggest putting masking tape over the area to be drilled before making the hole. We also strongly suggest starting with a small bit, and gradually working your way up to the 3/4” (19mm) hole.



The supplied grommet is “split” to make installation much easier once the wire is in the bag. In the above picture, the white circle is showing a “plug” that can easily be removed. If the only wire you have going into your saddlebag is the speaker wire, leave the plug in place. If you have a second wire for such things as USB power, or a music device interface, removing the plug from the grommet will allow the second wire to also pass without having to drill additional holes in your saddlebag.

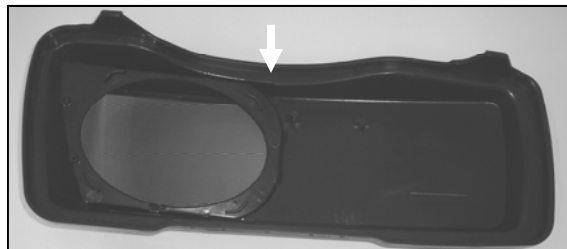


Remove the 4 screws (highlighted with white arrows above) that hold the cloth flap in place. With the flap off, slide one of the metal bars out from inside the flap as it will be used for new lid. The screws just removed will be re-used.



With the flap off, fold the factory lid all the way over, exposing the 5 screws highlighted above by white arrows. When these are removed, the factory lid will be free from the saddlebag. These screws will be used to install the new lid so keep them handy. With the factory lid off the bike, you will see a metal “strip” between the rubber gasket and the lid itself that the screws just removed threaded into. This metal strip must be removed as it will be used to install the new lid.

In the kit, you will see 2 lengths of rubber gasket material-one for each lid. Before applying the gasket, you need to clean the plastic well using isopropyl alcohol, or similar cleaner. **DO NOT use Acetone (It will eat plastic).** It is strongly recommended that any adhesives in this kit be applied at room temperature or higher. The white arrow below shows where we suggest you start applying the gasket. Don’t stretch the gasket when applying. When all the way around, you can expect to have approx 2.0” (5cm) left over to cut off. A sharp razor knife is good for this.



With the gasket installed, you will insert the factory metal strip (5 screws) between the gasket and new lid. Re-install the 5 factory machine screws the same way they came off the factory lid. The new lid will now be attached to your saddlebag.

Locate the flap that came with your new kit. The metal bar that was removed from the factory flap will be inserted into the new flap in the appropriate end. There is a shorter metal bar in your kit that will go in the shorter end of the new flap. Once done, using the 4 screws removed from the factory flap, secure the new flap to the lid/bag.

Re-install the tweeter bridge assembly making sure the rubber part is in place as shown on the bottom of page 2. Re-install the woofer noting that on the far end of the wire near the plug, there is a label that indicated brake side or clutch side. When correctly installed, the speaker connectors are positioned so they are adjacent to the “out side” of the bag. Re install the wires for the tweeter bridge assembly to the connectors on the 6x9 woofer.

Included in the kit is adhesive “pads” that when attached, have a provision to secure the wires in place using the supplied zip-ties. Half the supplied zip-ties, and half the supplied pads are for one saddlebag, and you guessed it, the other half is for the other saddlebag.

Its time to route the wires in the saddlebag. Please do a “ghost run” of placing the wires before applying any adhesives. **This will help-trust us!** For the ghost run, have the wire from the woofer go straight to the bag, just in front of the new flap, and “fold” the wire so it will naturally want to go straight down. Leave a little slack between the lid and bag to give a little “wiggle room” for when the lid opens and closes. Have the wire go straight down to the bottom of the bag and do another fold so the wire wants to point to the outside back of the saddlebag. Once there, do another fold to point the wire to the inside back of the saddle bag. Another fold to point the wire forward along the bottom of the bag, and directly below the point where you drilled the hole for the grommet, do another fold so the wire goes straight up to the hole. When done correctly, the black 2 pin plug can go through the grommet hole, and hang out approximately 4” (10cm)

Once your satisfied the wires are ghost run as instructed, you will want to plan where the adhesive pads will go, so that the supplied zip ties will secure the wires inside the bag. Note: Before applying the pads, you need to clean the plastic well using isopropyl alcohol, or similar cleaner. **DO NOT use Acetone (It will eat plastic).** With the pads in place, secure the wires in place using supplied zip ties.