



# YOSHIMURA

RESEARCH & DEVELOPMENT OF AMERICA, INC.

5420 DANIELS STREET STE A, CHINO CA. 91710 · (800)634-9166 · (909)628-4722 · FACSIMILE (909)591-2198

[www.yoshimura-rd.com](http://www.yoshimura-rd.com)

## **TRS "MINI" PERFORMANCE EXHAUST SYSTEM**

**SUZUKI  
2008  
DRZ-70**

**2120502**

STAINLESS STEEL FULL SYSTEM WITH CARBON FIBER SLEEVE

**2120503**

STAINLESS STEEL FULL SYSTEM WITH ALUMINUM SLEEVE

NOTE: THIS SYSTEM IS DESIGNED FOR USE IN CLOSED COURSE COMPETITION AND IS NOT INTENDED FOR ANY OTHER USE.



**THIS PRODUCT IS DESIGNED FOR USE IN CLOSED COURSE RACING AND IS NOT INTENDED FOR ANY OTHER USE.**



**CAUTION:** The muffler packing on this system **MUST** be replaced every 6-8 hours of use, or after each moto. Failure to follow recommended muffler re-packing interval can cause muffler damage and may void the warranty.



NOTE: IN THE STATE OF CALIFORNIA, IT IS ILLEGAL TO MODIFY THE EMISSION CONTROL SYSTEM. WHICH INCLUDES THE CARBURETORS OF ANY VEHICLE.

**Caution:** Exhaust system can be extremely hot. Let motorcycle cool down before beginning installation.

**Note:** Read through all instructions before beginning installation.

## Tools Needed:

Metric Socket Set, Ratchet, and Extension

Metric Open End Wrenches

Torque Wrench

## Installation Steps:

- 1 Remove seat and number plate as one unit (see Fig. 1 for bolt locations).
- 2 Remove stock exhaust system and exhaust port gasket (see Fig. 2 and Fig. 3 for bolt locations).
- 3 Install new stock exhaust port gasket (not included).
- 4 Install rubber grommet and aluminum insert into Yoshimura muffler bracket.
- 5 Install Yoshimura exhaust system. Install stock header nuts loosely, then install supplied muffler mount bolt, supplied washer, and stock nut.
- 6 Torque header nuts to 1.0 kg-m (7.3 lb-ft).
- 7 Torque muffler bolt to 2.5 kg-m (18 lb-ft).
- 8 Install Yoshimura heat shield to header with supplied bolts.
- 9 It is recommended that the muffler and tailpipe be wiped down with rubbing alcohol to remove oil and fingerprints. This will help prevent tarnishing of the finish after the exhaust is heated up.
- 10 Reinstall seat and cowlings.
- 11 Check for proper clearance between new exhaust system and rear suspension (i.e. tire, swing-arm, brake, etc). If any problem is found, please carefully follow through the installation steps again. If problem still persists, please call Yoshimura tech department at (800)634-9166 / in CA (909) 628-4722.

**NOTE:** After starting motorcycle, it is normal for new exhaust system and muffler to emit smoke until oil residue burns off.



Fig. 1



Fig. 2

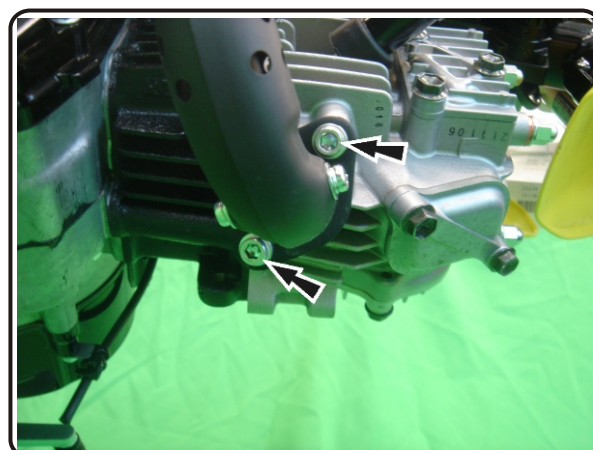
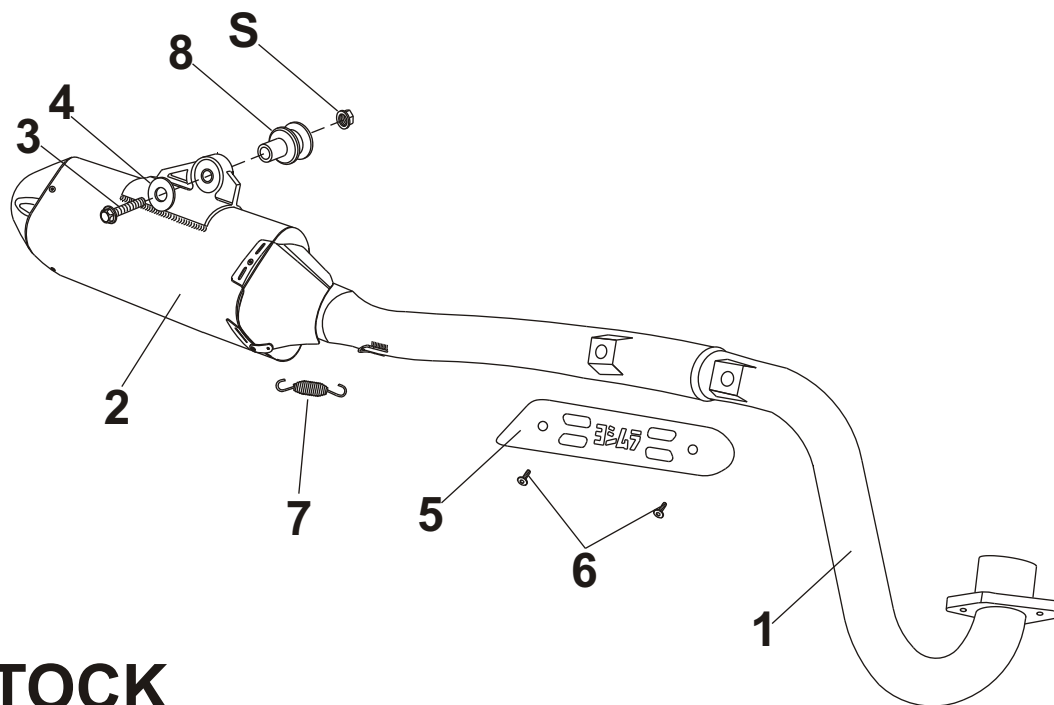


Fig. 3

**#2120502,3**



**S = STOCK**

Parts Diagram

NO.	DESCRIPTION	QTY	PART #
1	Yoshimura Header & Tailpipe Stainless Steel Competition	1	2120-101
2	Carbon Fiber Sleeve Muffler Aluminum Sleeve Muffler	1	2120502-RMA 2120503-RMA
3		1	M8X70H
4	8mm Large Washer	1	8MMWASHERL
5	Yoshimura Heat Shield	1	2205-HS
6	Heat Shield Bolts	2	RC116HSB
7	Springs	2	RACE-SPX-1
8	Aluminum Grommet Insert	1	ALS-009
**	Rubber Grommet	1	011257-00
**	Spring Puller Tool	1	ST-200
**	Yoshimura Vinyl Sticker	1	17029



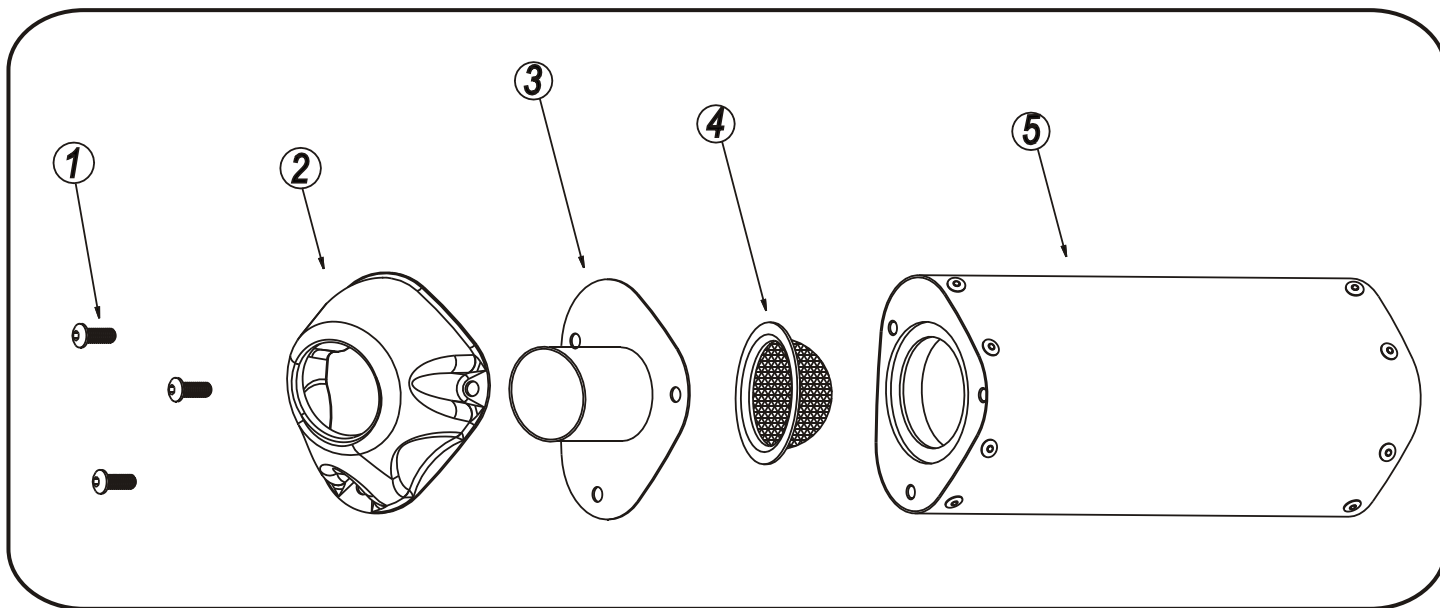
# YOSHIMURA

RESEARCH&DEVELOPMENT OF AMERICA, INC.

5420 DANIELS STREET STE A, CHINO CA. 91710 · (800)634-9166 · (909)628-4722 · FACSIMILE (909)591-2198

[www.yoshimura-rd.com](http://www.yoshimura-rd.com)

## TEC-SA Spark Arrester Cleaning Information



Parts Diagram

**Caution:** Muffler can be extremely hot. Let muffler cool down before removing spark arrester.

**Note:** Read through all instructions before beginning disassembly.

### Tools Needed:

4mm Allen Key  
Wire Brush  
Pair of Gloves  
Safety Glasses

### Cleaning Steps:

- 1 Using a 4mm Allen key remove the three 6mm x 16mm button head bolts located in the muffler end cap (see Parts Diagram for location).
- 2 Remove the end cap, exhaust tip, and spark arrester from the muffler.

NO.	DESCRIPTION	QTY	PART #
1	6 x 1.0mm x 16mm Button Head Screw	3	M6X16BHS
2	Mini TRC Carbon Fiber Cap	1	MTRC-CCF
3	Mini TRC Exhaust Tip	1	MTRC-T
4	TEC Spark Arrester Insert	1	TEC-SA
5	Muffler Assembly	1	**

- 3 Using a wire brush remove carbon deposits from spark arrester screen. Once clean inspect the screen for excessive wear or damage, if any is found the spark arrester must be replaced. Cleaning and inspection should be performed after every 60 hours of use.

**Caution:** Gloves and safety glasses should be worn while cleaning spark arrester.

- 4 Re-install spark arrester, gasket, end cap and 6mm x 16mm screws into muffler assembly. Torque bolts to 1.0 kg-m (7.3 lb-ft).

**Note:** It is recommended that a low strength "Loctite" is used on the bolts.