



INSTALLATION

CHROME UPPER FORK SHROUD for VICTORY

7120

THANK YOU FOR CHOOSING KÜRYAKYN!

PROTECT YOURSELF AND OTHERS FROM POSSIBLE INJURY AND PROPERTY DAMAGE OR LOSS. PAY CLOSE ATTENTION TO ALL INSTRUCTIONS, WARNINGS, CAUTIONS, AND NOTICES REGARDING THE INSTALLATION, USE, AND CARE OF THIS PRODUCT.

WARNING

THIS INDICATION ALERTS YOU TO THE FACT THAT IGNORING THE CONTENTS DESCRIBED HEREIN CAN RESULT IN POTENTIAL DEATH OR SERIOUS INJURY.

CAUTION

This indication alerts you to the fact that ignoring the contents described herein can result in minor or moderate potential injury.

NOTICE

This indication alerts you to the fact that ignoring the contents described herein may negatively affect product performance and functionality or damage the product itself or the product to which it is being attached.

MAKE SURE THE FOLLOWING PARTS HAVE BEEN INCLUDED IN THE KIT:

- 1 Lower Left Front Shroud—"A"—Chrome
- 1 Lower Right Front Shroud—"B"—Chrome
- 1 Lower Left Rear Shroud—"C"—Chrome
- 1 Lower Right Rear Shroud—"D"—Chrome
- 2 Upper Outer Shroud—"E"—Chrome
- 2 Upper Inner Shroud—"F"—Chrome
- 2 Alcohol pads
- 8 Cable ties
- 1 Installation instructions

Black parts are depicted in these instructions. Installation of Chrome parts is the same.

TOOLS SUGGESTED

Warm soapy water, clean rag, hex socket set and ratchet, and a torque wrench (ft/lbs).

NOTICE

This copy of installation instructions contains important information. Ensure that the end user receives this copy and is aware of its importance for future reference.

STEP 1

Read and understand all steps in the instructions before starting the installation. Park the motorcycle on a hard, level surface and turn off the ignition.

NOTICE

This kit contains pairs of upper and lower shroud halves. The lower halves ARE SIDE-SPECIFIC.

Each part has been marked with a letter on the inside surface to ease installation.

After unpacking the kit, lay the parts out on a soft surface. Familiarize yourself with the specific mounting locations before permanently installing the parts.

Left=clutch-side; Right=brake-side

CUSTOMER SERVICE

877.370.3604 (toll free)

INSTALLATION QUESTIONS

techsupport@kuryakyn.com
or call 715.247.2983

LIMITED WARRANTY

Kuryakyn warrants that any Kuryakyn products sold hereunder, shall be free of defects in materials and workmanship for a period of one (1) year from the date of purchase by the consumer excepting the following provisions:

- Kuryakyn shall have no obligation in the event the customer is unable to provide a receipt showing the date the customer purchased the product(s).
- The product must be properly installed, maintained and operated under normal conditions.
- Kuryakyn makes no warranty, expressed or implied, with respect to any gold plated products.
- Kuryakyn shall not be liable for any consequential and incidental damages, including labor and paint, resulting from failure of a Kuryakyn product, failure to deliver, delay in delivery, delivery in nonconforming condition, or for any breach of contract or duty between Kuryakyn and a customer.
- Kuryakyn products are often intended for use in specific applications. Kuryakyn makes no warranty if a Kuryakyn product is used in applications other than intended.
- Kuryakyn electrical products are warranted for one (1) year from the date of purchase by the consumer. L.E.D.'S contained in components of Kuryakyn products will be warranted for defects in materials and workmanship for 3 years from the date of purchase where as all other components shall be warranted for one(1) year. This includes, but is not limited to; control modules, wiring, chrome & other components.

- Kuryakyn makes no warranty of any kind in regard to other manufacturer's products distributed by Kuryakyn. Kuryakyn will pass on all warranties made by the manufacturer and where possible, will expedite the claim on behalf of the customer, but ultimately, responsibility for disposition of the warranty claim lies with the manufacturer.

ABOUT OUR CATALOG

For purchasing Kuryakyn® products, you can receive a complete catalog free of charge.

Send the Proof-of-Purchase below with your address to: Kuryakyn

454 County Road V V

Somerset, WI 54025-9031

Please indicate either Accessories Catalog for Harley-Davidson® or GL & Metric Cruisers.

Be sure to ask your local dealer about other Kuryakyn® products, the motorcycle parts and accessories designed for riders by riders.

©2005 Kuryakyn USA® All Rights reserved.



kuryakyn.com

BIKE PREP:

Küryakyn®

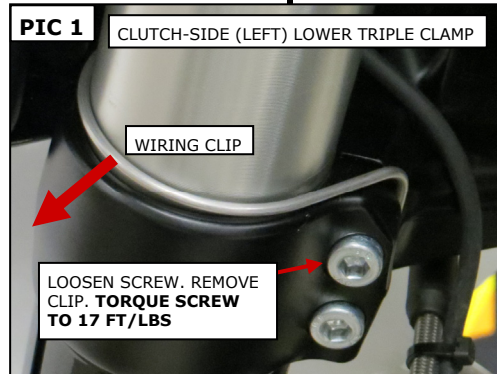
STEP 2

Refer to **PIC 1**. On the clutch-side (left) lower triple clamp, loosen the upper screw. Remove the wiring clip; it will not be reused. Tighten the screw and **torque to 17 ft/lbs.**

NOTICE

Ensure proper adhesion of this product. Clean the installation area of grease, oil, bugs, dirt and other debris (including wax and polish). Küryakyn WILL NOT issue a warranty for any improperly installed products.

Do not attempt this installation in temperatures below 50° F. Proper adhesive bonding ONLY occurs above 50°

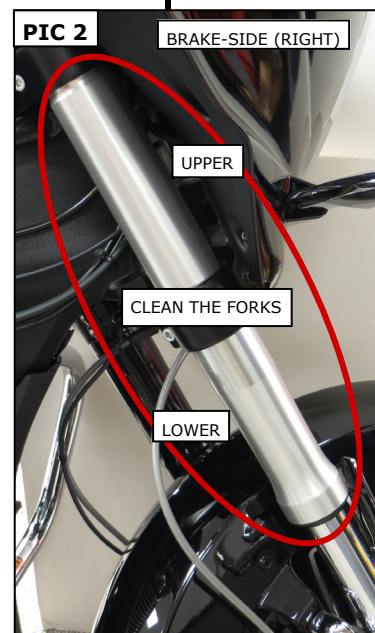


STEP 3

Refer to **PIC 2**. Using warm soapy water and a soft clean rag, remove any grease, oil, dirt, and other debris from all external surfaces of both front forks. Rinse the forks with clean water and allow them to completely dry.

STEP 4

Using the included alcohol pads, wipe the cleaned areas in **PIC 2** to remove any wax or polish. Allow the areas to completely dry.



INSTALL THE LOWER SHROUDS:

STEP 5

Test fit the Lower Right Front (**B**) and Rear (**D**) Shrouds as shown in **PIC 3 and 4**. The flanged edges of the Front Shroud (**B**) will fit over the edges of the Rear Shroud (**D**).

NOTE:

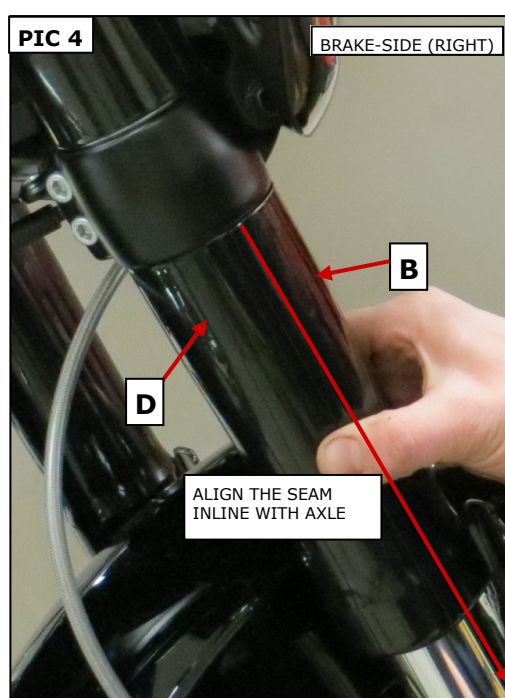
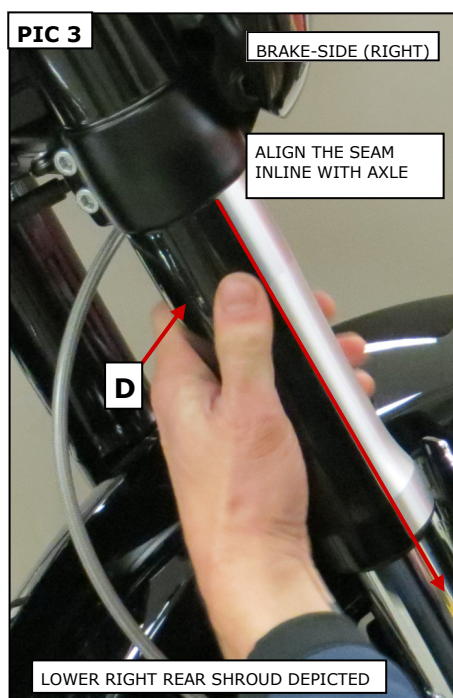
TYPICAL INSTALLATION—Align the seam of the Lower Front and Rear Shrouds inline with the axle. The seam can be positioned in any orientation with the flange on (B) facing the front or outside.

STEP 6

Remove the Shrouds. Using your fingernail, rub the backing to activate the adhesive on the Lower Right Rear Shroud (**D**). Refer to **PIC 5**. Remove the backing.

STEP 7

One at a time, press the Lower Shrouds into place starting with the Rear Shroud (**D**). The flanged edges of the Front Shroud (**B**) will fit over the edges of the Rear Shroud (**D**).



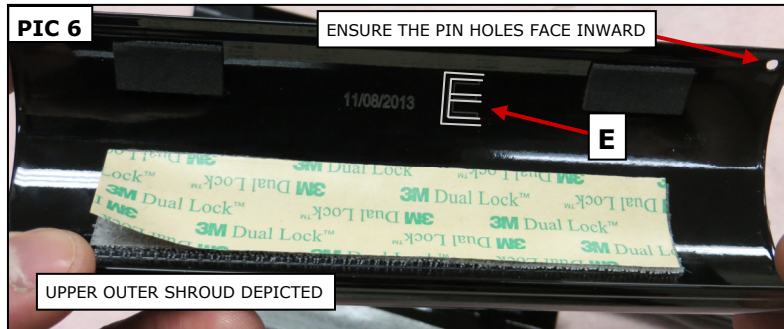
-cont.-

PAGE
2

STEP 8 Repeat **STEPS 5 through 7** for the other side. The Shrouds are marked **(A)** and **(C)**.

INSTALL THE UPPER SHROUDS:

STEP 9 Refer to **PIC 6** below. Locate one Upper Outer **(E)** and one Upper Inner **(F)** Shroud.



STEP 10 Refer to **PIC 8 and 9**. Test fit the Upper Outer **(E)** and Upper Inner **(F)** Shrouds on the brake-side (right) fork.

NOTE: Refer to **PIC 7 and 8**. The seam in the shrouds can be aligned with the Lower Fork Shrouds or facing the rear.

STEP 11 Remove the Shrouds. Using your fingernail, rub the backing to activate the adhesive on the Upper Inner Shroud **(F)**. Remove the backing.

STEP 12 Align the Upper Inner Shroud **(F)** as determined in **STEP 10** and press it onto the fork; hold it in place for one minute. Full bonding will occur in 24 hours.

STEP 13 Install the Upper Outer Shroud **(E)** in the same manner as the Inner Shroud. The flanged edges of the Upper Outer Shroud will fit over the edges of the Inner Shroud.

STEP 14 Repeat **STEPS 9 through 13** for the clutch-side (left). The left side Upper Shrouds are also marked **(E)** and **(F)**.

STEP 15 Using the included Cable ties, secure the Upper and Lower Shrouds to the forks; Allow the adhesive to cure for 24 hours, then carefully remove the Cable ties.

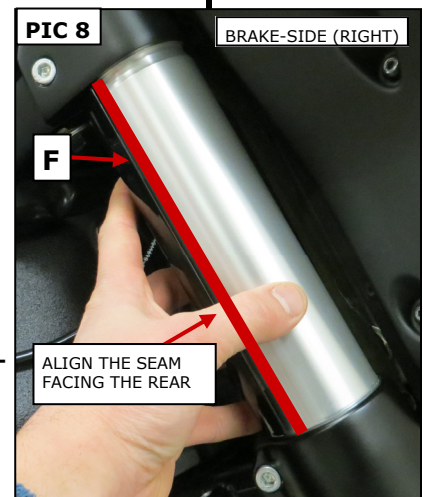
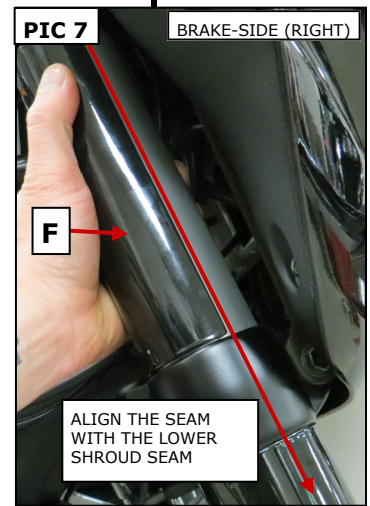
NOTE: If the bike is going to be operated before full bonding takes place, secure the Shrouds to the forks with the included Cable ties.

NOTICE

Ensure that there is no contact or interference with any component on the motorcycle when the handlebars are turned to their full stop position on either side.

The Shrouds are attached to the forks with 3M Dual Lock adhesive. The Shrouds are removable, however, it is not recommended.

To remove the Shrouds: push evenly on both flange edges at the bottom of the Shroud until it releases from the fork. DO NOT use a tool to pry or bend the Shroud to remove it.



Ride On!