

# **[POWER] COMMANDER III**

CERTIFIED **USB**

## **2005 Kawasaki ZX6R** Installation Instructions

### **Parts List**

- 1 Power Commander
- 1 USB Cable
- 1 CD-ROM
- 1 Installation Guide
- 1 Power Adapter
- 2 Power Commander Decals
- 2 Dynojet Decals
- 2 Dual lock Velcro® Strip
- 1 Alcohol Swab

Button Adjustment Display



Faceplate Buttons

Expansion Port

USB Port

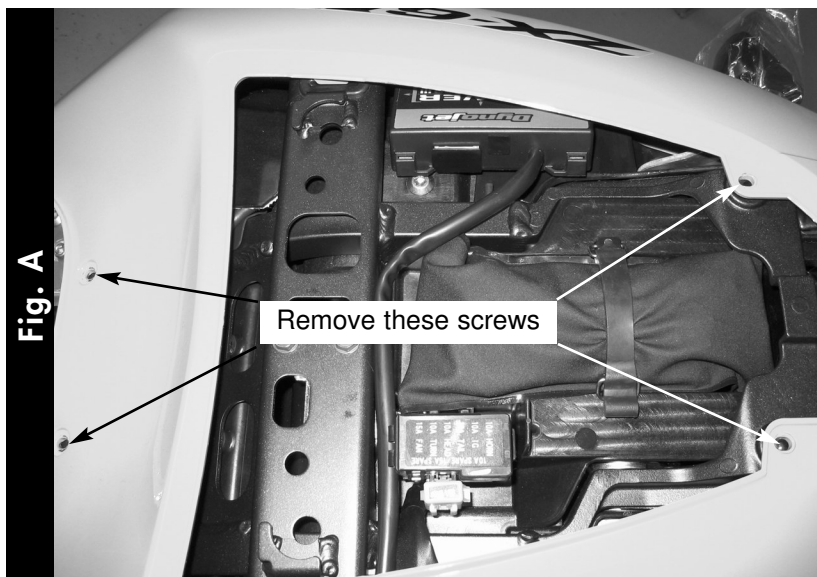


**The ignition MUST be turned OFF before installation!**

You can also download the Power Commander software and latest maps from our web site at:

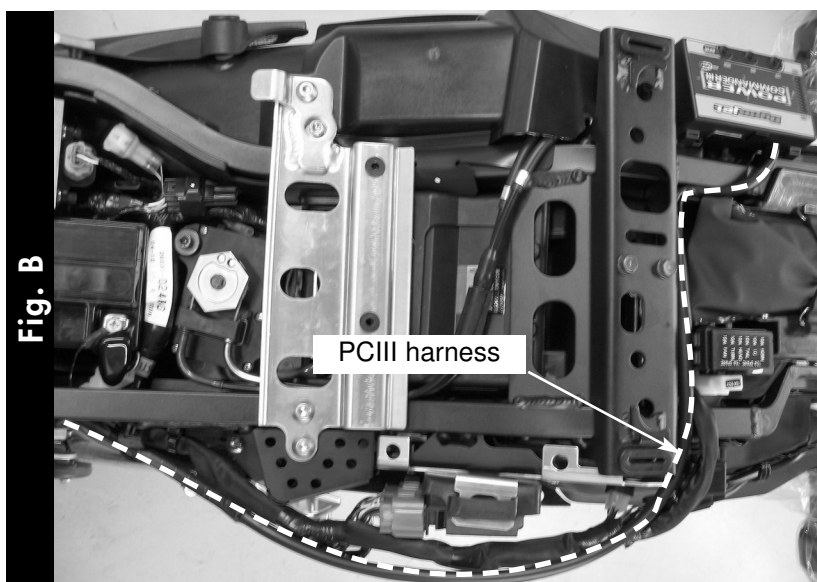
[www.powercommander.com](http://www.powercommander.com)

**PLEASE READ ALL DIRECTIONS BEFORE STARTING INSTALLATION**

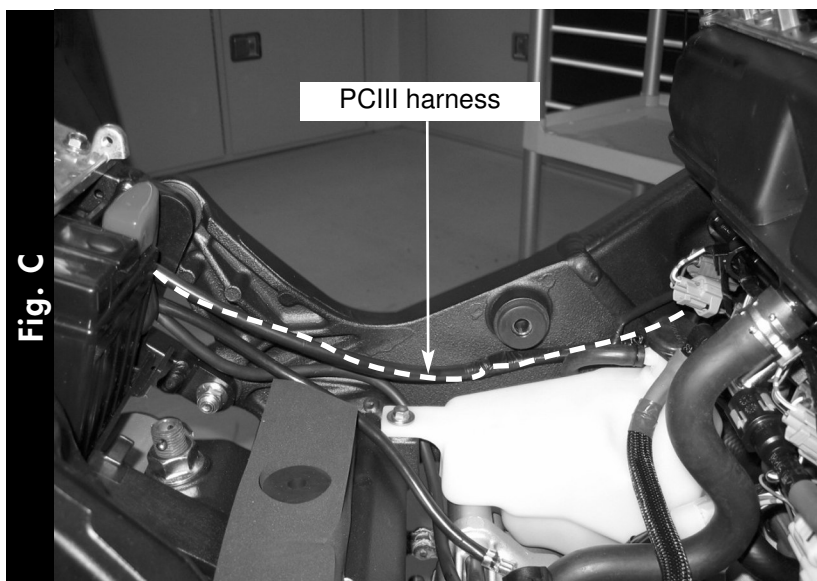


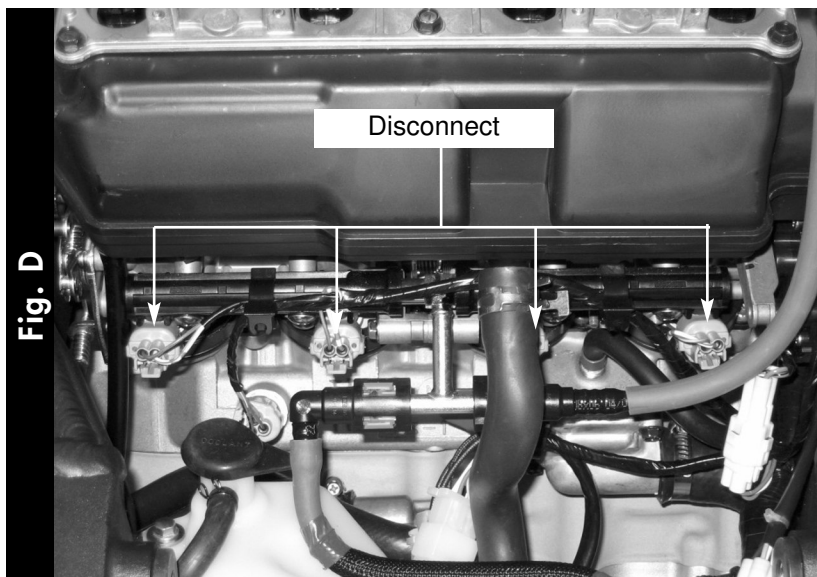
1. Remove the tail section by removing the undertail and removing the six screws for the tail section.

2. Prop the front of the fuel tank up.

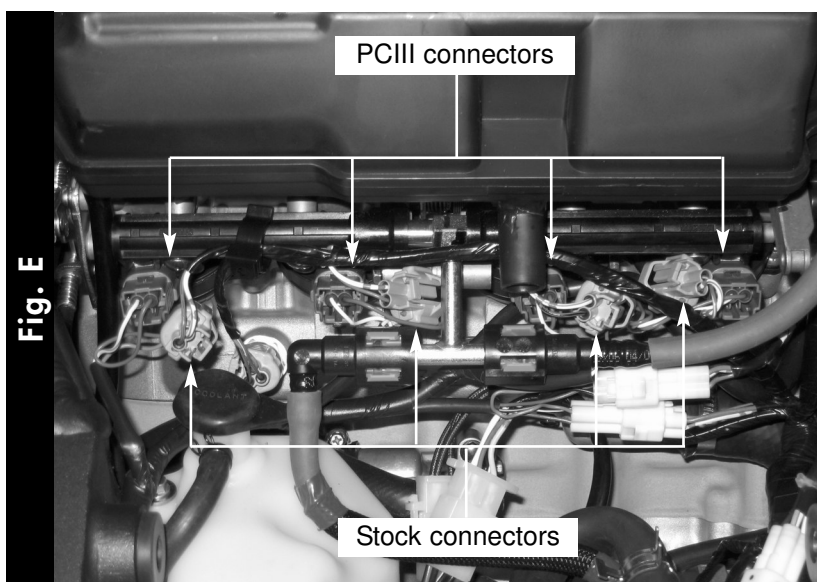


3. Lay the PCIII in the tail section and route the harness along side the stock wiring harness towards the throttle bodies (Fig. B&C).



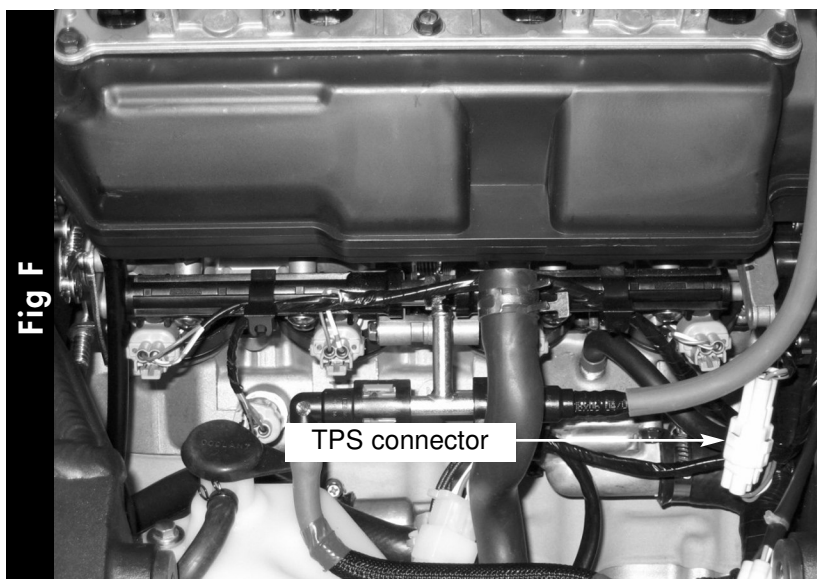


4. Disconnect the stock wiring harness from the LOWER injectors at the throttle bodies (Fig. D).

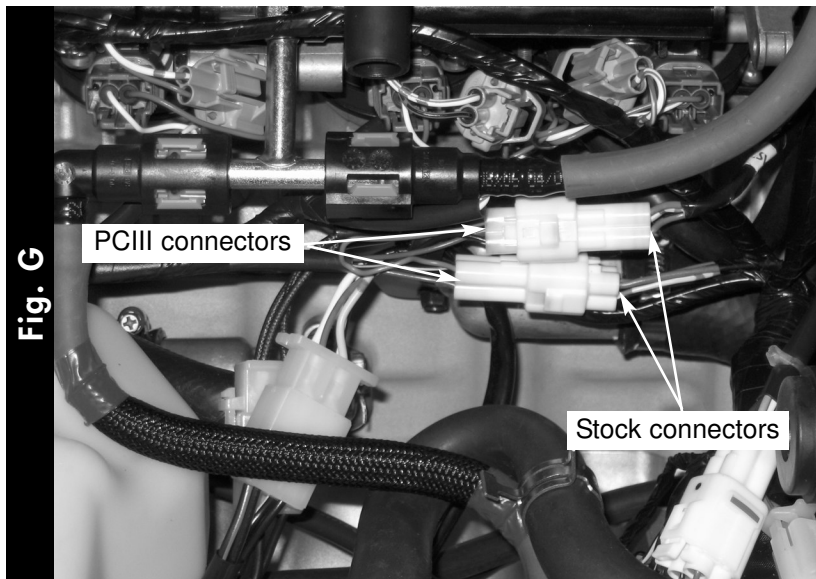


5. Plug the PCIII connectors in-line of the stock injectors and wiring harness.

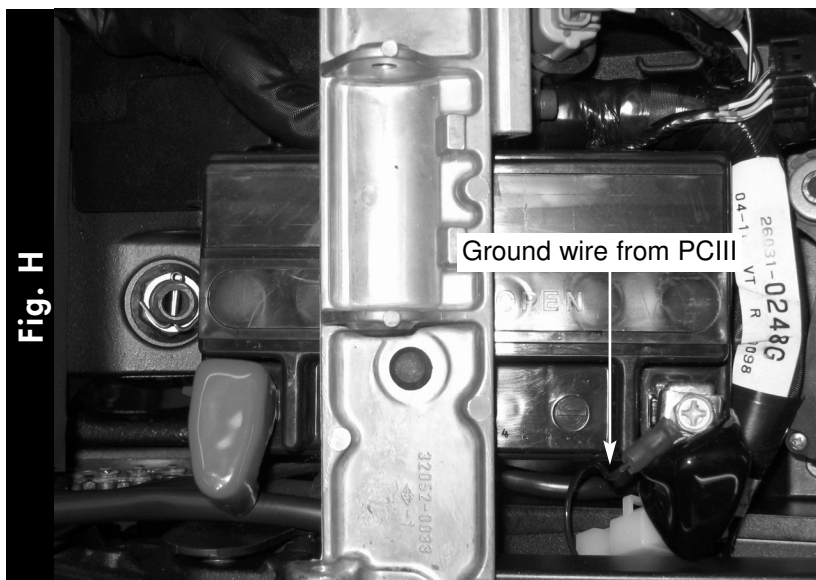
ORANGE - cylinder 1  
 YELLOW - cylinder 2  
 GREEN - cylinder 3  
 BLUE - cylinder 4



6. Locate the Throttle Position Sensor connector behind the throttle bodies. This is a WHITE 3 pin connector (Fig. F)



7. Plug the PCIII harness in-line of the stock wiring harness (Fig. G).



8. Attach the ground wire from the PCIII to the negative side of the battery (Fig. H).
9. Bolt down the fuel tank.
10. Reinstall the tail section.