



YOSHIMURA

RESEARCH&DEVELOPMENT OF AMERICA, INC.

5420 DANIELS STREET STE A, CHINO CA., 91710 · (800)634-9166 · (909)628-4722 · FACSIMILE (909)591-2198

www.yoshimura-rd.com

YOSHIMURA PERFORMANCE EXHAUST SYSTEM

**2008-2010
SUZUKI
GSX-R600
GSX-R750**

1170072	STAINLESS STEEL FULL SYSTEM WITH CARBON FIBER MUFFLER
1170075	STAINLESS STEEL FULL SYSTEM WITH STAINLESS MUFFLER
1170077	STAINLESS STEEL FULL SYSTEM WITH TITANIUM MUFFLER
1170035	STAINLESS STEEL FULL SYSTEM WITH R-22 MUFFLER



**THIS PRODUCT IS DESIGNED FOR USE IN CLOSED COURSE
RACING AND IS NOT INTENDED FOR HIGHWAY USE.**



NOTE: IN THE STATE OF CALIFORNIA, IT IS ILLEGAL TO MODIFY THE EMISSION CONTROL SYSTEM INCLUDING THE FUEL INJECTION SYSTEM OF ANY VEHICLE.

Caution: Exhaust system can be extremely hot. Let motorcycle cool down before beginning installation. Always wear hand and eye protection and take precautionary measures to avoid injury.

Note: Read through all instructions before beginning installation.

Tools Needed:

Metric socket set
3/8" ratchet and extension
12mm wrench
4mm and 6mm allen wrench
Torque wrench
Small flat head screwdriver

Installation Steps:

- 1 Remove left and right side fairings (see Fig. 1 and Fig. 2).
- 2 Remove stock muffler (see Fig. 3 and Fig. 4).
- 3 Remove stock rear muffler bracket.
- 4 Remove lower radiator support bracket and swing radiator forward to ease removal of stock header.
- 5 Remove stock header and exhaust port gaskets. Remove stock exhaust valve cables. (See page 4 for ECU mod)

NOTE: The Yoshimura full system is designed to be installed without exhaust port gaskets. If exhaust port gaskets are used, there may be insufficient clearance between the header and radiator.

- 6 Install Yoshimura manifolds and flanges into exhaust ports using stock header nuts (see Fig. 5 for flange orientation). Do not torque at this time.
- 7 Install Yoshimura header from one end of the engine to the other by slipping one tube at a time onto manifolds.

NOTE: Lightly tapping header legs with plastic mallet after header

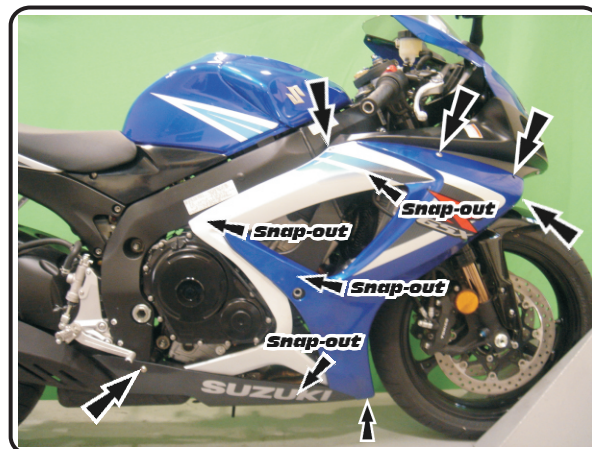


Fig. 1



Fig. 2

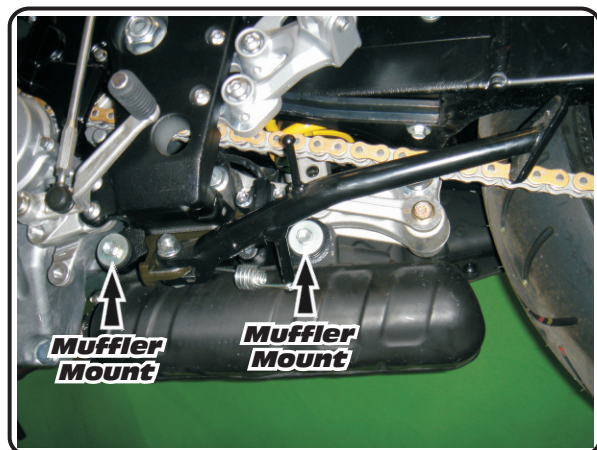


Fig. 3

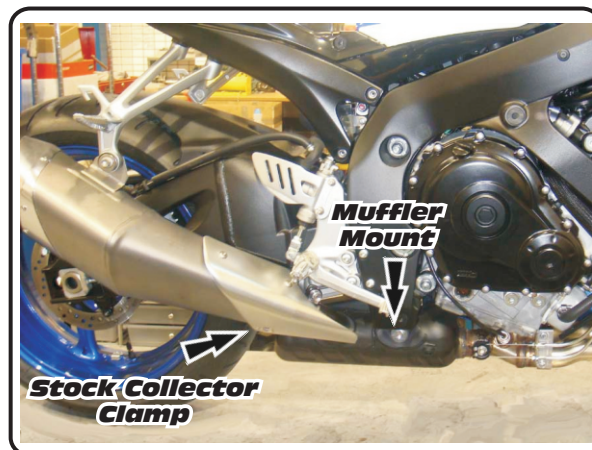


Fig. 4

- 8 Connect header to flanges using the supplied springs (see Fig. 5 for spring locations).
 - 9 Torque header bolts to 1.0 kgf-m (7.3 lb-ft).
 - 10 Slide Yoshimura tailpipe onto Yoshimura header outlet and connect together using the supplied exhaust springs (see Parts Diagram on page 5).
 - 11 Bolt tailpipe to stock under belly muffler mount location using the supplied muffler mount bolt, supplied aluminum spacer, supplied nut, stock rubber grommet, and stock washer (see Parts Diagram on page 6). Do not tighten bolt at this point.
 - 12 Install rubber heat insulator to the inside of the Yoshimura muffler clamp and slide Yoshimura muffler clamp over the Yoshimura muffler. Slide the supplied exhaust clamp over the inlet of the Yoshimura tailpipe.
 - 13 Slide the Yoshimura muffler onto the Yoshimura tailpipe.
 - 14 Mount Yoshimura muffler clamp to the inside of the stock muffler bracket using the stock bolt, washer, and nut.
 - 15 Standing to the back of the motorcycle, check for proper alignment of the muffler. Adjust if necessary.
- NOTE:** To adjust fitment, it may be necessary to rotate the tailpipe or the muffler independently until proper alignment of the muffler is achieved.
- 16 Torque tailpipe mount bolt and muffler mount bolt to 2.3 kgf-m (16.5 lb-ft).
 - 17 Reinstall lower radiator bracket and the left and right side fairings.
 - 18 It is recommended that the muffler and tailpipe be wiped down with rubbing alcohol to remove oil and fingerprints. This will help prevent tarnishing of the finish after the exhaust is heated up.
 - 19 Check for proper clearance between new exhaust system and motorcycle. (i.e. Swing-arm, body work, etc.) If any problem is found, please carefully follow through the installation steps again. If problem still persists, please call Yoshimura technical department at (800)634-9166 / in CA (909)628-4722.

Note: After starting motorcycle, it is normal for new exhaust system and muffler to smoke until oil residue burns off.

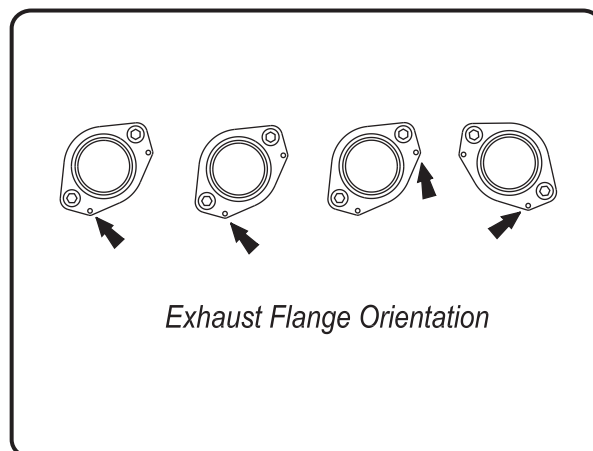


Fig. 5

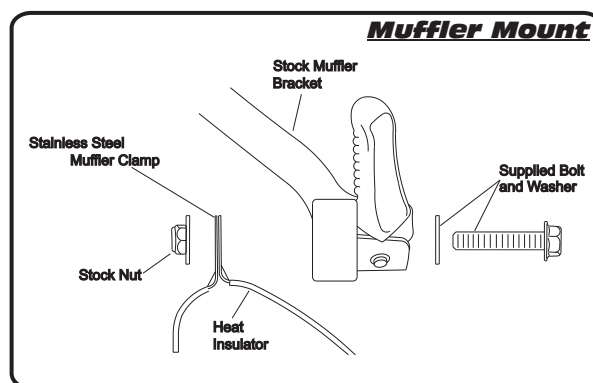
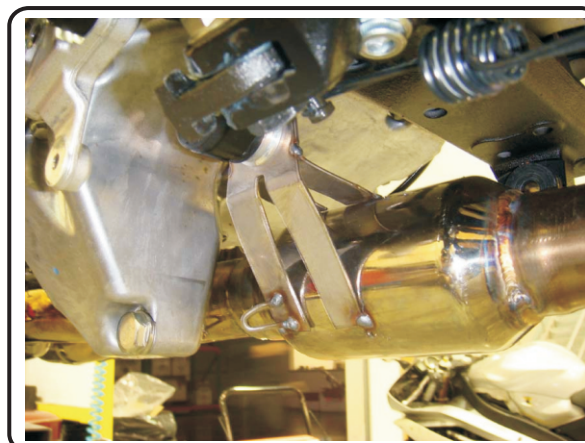


Fig. 6



Necessary Wiring Changes:

- 1 It is necessary to properly disable the Suzuki SET (Suzuki Exhaust Tuning) system by following the steps listed below. Without properly disabling the SET system the engine will run in a power limited fail-safe mode.
- 2 Remove rider seat and metal brace located over the ECU.
- 3 With ignition in OFF position, disconnect the black wire harness plug from the ECU (see Fig. 1).
- 4 Remove the orange cap by pressing the small orange tabs apart and pulling the orange cap off (see Fig. 2).
- 5 Pull out the #5 wire (BLACK WIRE W/ WHITE STRIPE). Insert a very small flat head screwdriver into the hole that the arrow is pointing to in Fig. 2. Gently pry down with the screwdriver to unlock the wire and pull on the wire from the rear of the plug to remove.

NOTE: If you don't have a small flat head screwdriver use a regular paper clip to make one (see Fig. 3).

- 6 Completely seal off the disconnected wire to prevent possible electrical problems. Dip disconnected wire in liquid electrical tape. After liquid electrical tape is dry, slide a 1.5" piece of heat shrink tubing 1" over the end of the disconnected wire and fold the remaining 0.5" of heat shrink tubing. Slide a slightly larger piece of heat shrink tubing over the folded section of heat shrink tubing. Using a heat gun, shrink the heat shrink tubing to create a water tight seal. Secure disconnected wire to harness using a zip tie.
- 7 Reinstall orange cap onto black wiring harness plug and reconnect plug to ECU.
- 8 Reinstall the metal brace and rider seat.
- 9 Completely remove the exhaust valve cables from the EXCVA servo (refer to the factory service manual for removal instructions).

NOTE: Do not unplug EXCVA servo, as it may cause the bike to run in "safe" mode.

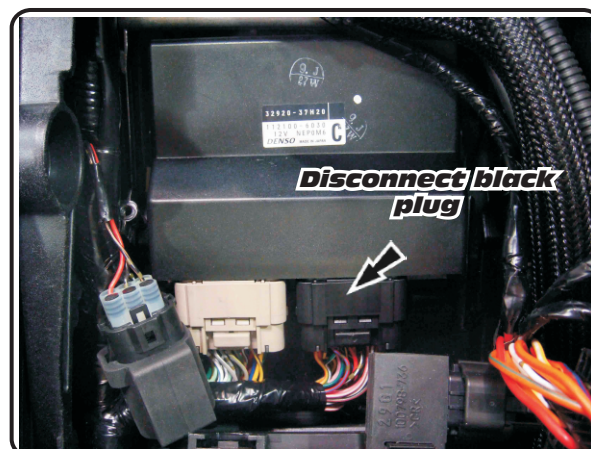


Fig. 1

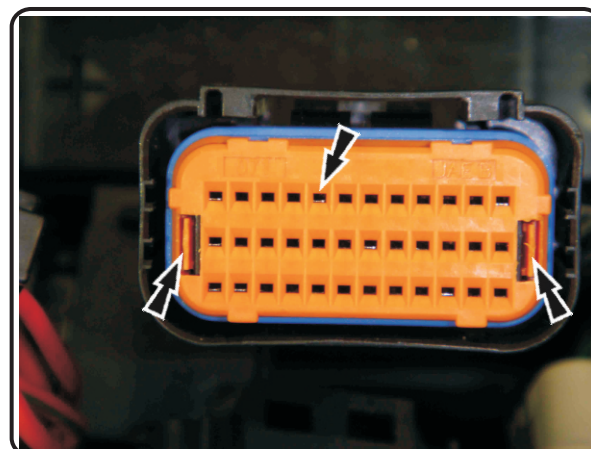


Fig. 2

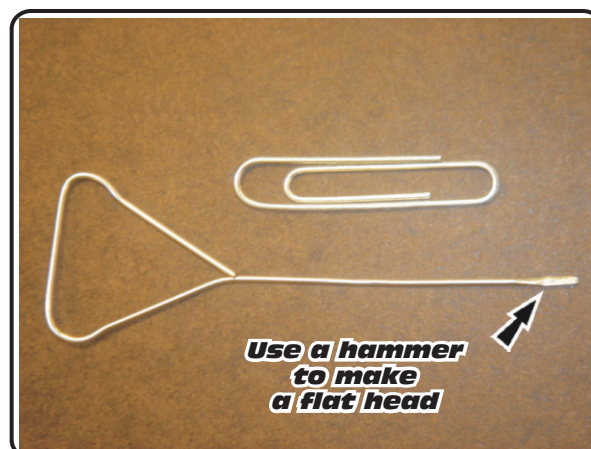
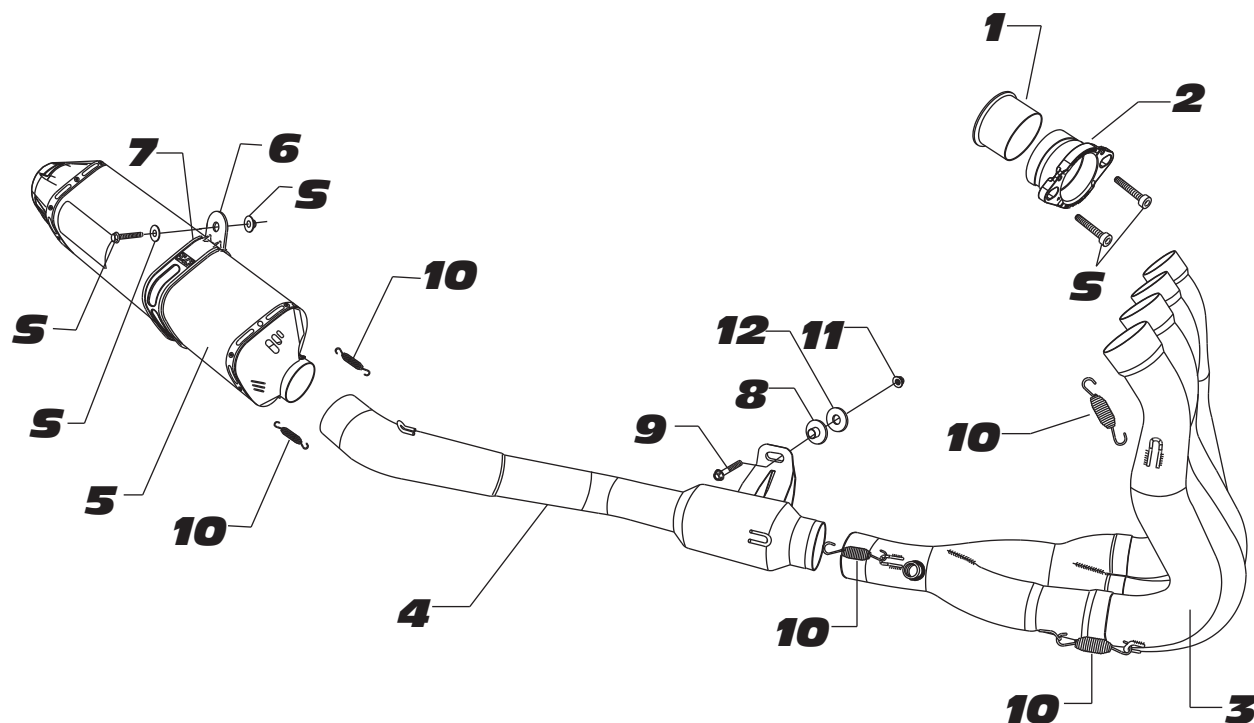


Fig. 3

#117007(2,5,7) / #1170035



S=STOCK

Parts Diagram

NO.	DESCRIPTION	QTY	PART #
1	Yoshimura Stainless Steel Manifold	4	1228SMT
2	Yoshimura Aluminum Flange	4	1170SDY
3	Yoshimura Stainless Steel Header	1	1170-404F
4	Yoshimura Stainless Steel Tailpipe	1	1170-419-01
5	Yoshimura TRC Muffler Carbon Fiber Muffler Stainless Steel Muffler Titanium Muffler R-22 Muffler SS Sleeve w/ SS endcap	1	CRTRC146W SRTRC146W TRTRC146W SRR22146W
6	TRC Exhaust Clamp for Carbon Fiber Muffler Sleeve Stainless Steel or Titanium Muffler Sleeve	1	CTS084 CTS084X
7	TRC Muffler Clamp Insulator	1	HT SHLDTRS
8	Aluminum Spacer	1	ALS-013
9	8mm x 50mm Flanged Hex Head Bolt	1	M8X50H
10	Medium Exhaust Spring	12	RACE-SPS-1
11	8mm Nut	1	8MMNUT
12	8mm Washer Large	1	8MMWASHERL
**	Spring Puller Tool	1	ST-200
**	Yoshimura Vinyl Sticker	2	17028-BLK