



YOSHIMURA

RESEARCH&DEVELOPMENT OF AMERICA, INC.

5420 DANIELS STREET STE A, CHINO CA., 91710 · (800)634-9166 · (909)628-4722 · FACSIMILE (909)591-2198

www.yoshimura-rd.com

YOSHIMURA PERFORMANCE EXHAUST SYSTEM

SUZUKI
2007-2008
GSX-R1000

1117072

TRC FULL SYSTEM WITH CARBON FIBER SLEEVE

1117075

TRC FULL SYSTEM WITH STAINLESS SLEEVE

1117077

TRC FULL SYSTEM WITH TITANIUM SLEEVE

1117035

R22 FULL SYSTEM WITH HIGH POLISHED SLEEVE



**THIS PRODUCT IS DESIGNED FOR USE IN CLOSED COURSE
RACING AND IS NOT INTENDED FOR HIGHWAY USE.**



NOTE: IN THE STATE OF CALIFORNIA, IT IS ILLEGAL TO MODIFY THE EMISSION CONTROL SYSTEM, WHICH INCLUDES THE FUEL INJECTION OF ANY VEHICLE.

Caution: Exhaust system can be extremely hot. Let motorcycle cool down before beginning installation.

Note: Read through all instructions before beginning installation.

Tools Needed:

Metric Socket Set
3/8" ratchet and extension
Metric Combination Wrench Set
Metric Allen Wrench Set
Torque Wrench
Small Flat Head Screwdriver

Installation Steps:

- 1 Remove stock right side tailpipe heatshield (see Fig. 1).
 - 2 Loosen left and right stock collector clamps (see Fig. 2 and 3).
 - 3 Unbolt and remove left and right stock mufflers from passenger foot rest mounts.
 - 4 Remove left and right fairings. Remove underbelly muffler and underbelly muffler mounting brackets.
 - 5 Completely remove exhaust valve cables. Do not remove or unplug exhaust valve servo motor. Only the exhaust valve cables are to be removed. Unscrew O2 sensor. Remove stock header and exhaust port gaskets.
- NOTE:** This Yoshimura full system is designed to be installed without exhaust port gaskets. If exhaust port gaskets are used, there may be insufficient clearance between the header and radiator.
- 6 Drain oil and remove oil cooler and oil lines from motorcycle as one unit. Remove lower radiator bracket and tilt radiator forward.
 - 7 Install Yoshimura manifolds and flanges into exhaust ports using stock header nuts (see Fig. 4 for flange orientation).
 - 8 Torque header nuts to 1.0 kgf-m (7.3 lb-ft).
 - 9 Install Yoshimura header from one end of the engine to the other by slipping one tube at a time onto manifolds.
 - 10 Connect header to flanges using the supplied springs.
 - 11 Bolt header to chassis mount using stock bolt and supplied spacer, washer, and nut (see Parts Diagram on the last page).
 - 12 Install chassis mount bolt but do NOT tighten. Install stock O2 sensor into Yoshimura header.

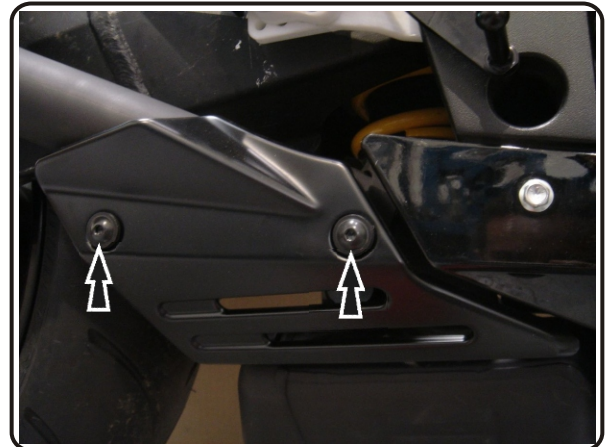


Fig. 1



Fig. 2

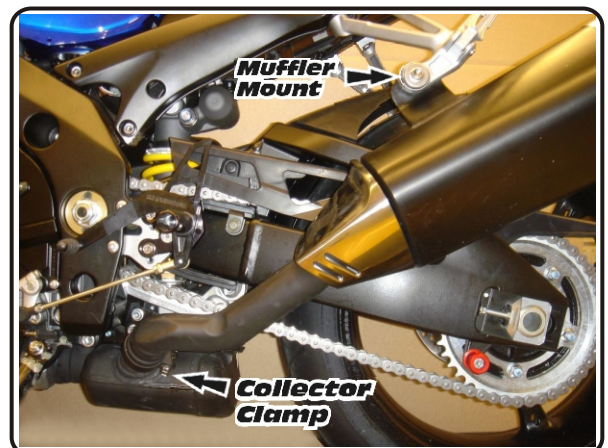
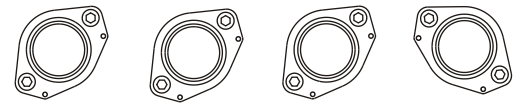


Fig. 3

- 13 Install rubber heat insulator to inside of muffler clamp.
- 14 Slip Yoshimura muffler and tailpipe onto the Yoshimura header.
- 15 Mount muffler clamp to inside of right passenger footpeg using stock hardware.
- 16 Torque muffler mount bolt to 2.3 kgf-m (16.5 lb-ft).
- 17 Check header and position by adjusting header so that chassis mount bolt lines up. Check for clearance between muffler and swingarm. Torque chassis mount bolt to 2.3 kg-m (16.5 lb-ft). Reinstall lower radiator bracket, oil cooler, oil cooler lines, and replace engine oil to proper level.
- 18 Make necessary wiring changes as described on page 4 and 5.

NOTE: Failure to perform the needed wiring changes will result in the motorcycle running in a performance restricted safe mode.
- 19 Reinstall the left and right side fairings.
- 20 Install Yoshimura heatshield onto Yoshimura tailpipe using the supplied hardware.
- 21 It is recommended that the muffler and tailpipe be wiped down with rubbing alcohol to remove oil and fingerprints. This will help prevent tarnishing of the finish after the exhaust is heated up.
- 22 Check for proper clearance between new exhaust system and motorcycle. (i.e. Swing-arm, body work, etc.) If any problem is found, please carefully follow through the installation steps again. If problem still persists, please call Yoshimura technical department at (800)634-9166 / in CA (909)628-4722.

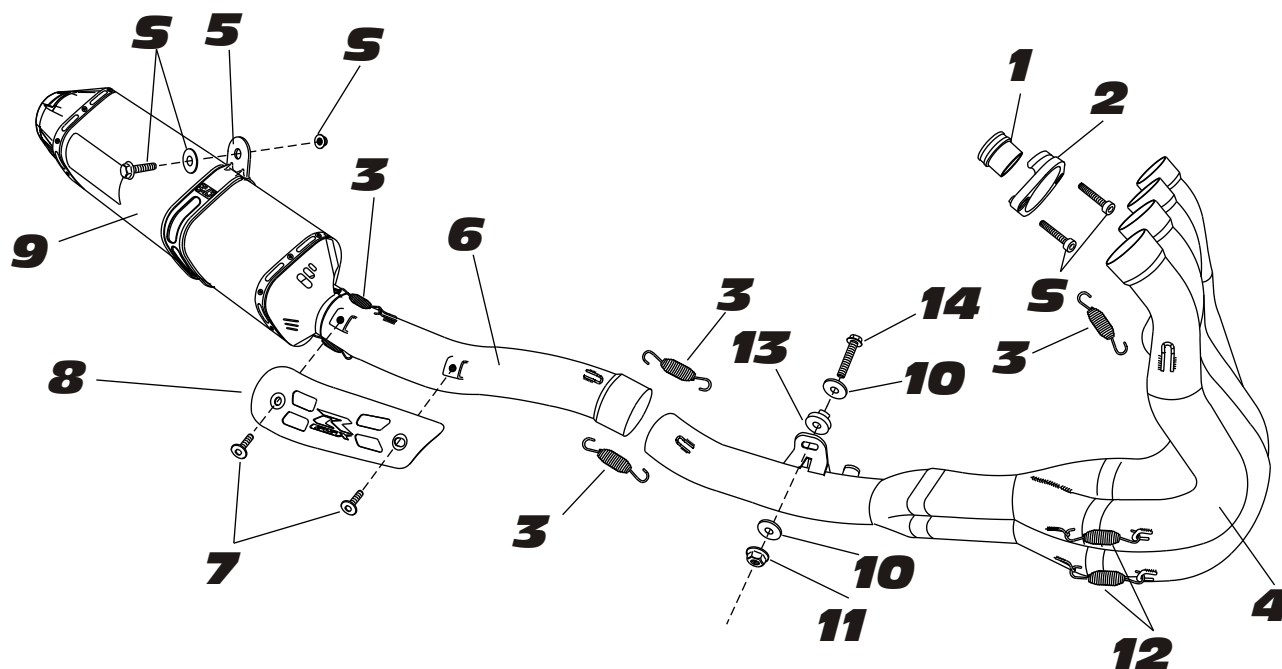
Note: After starting motorcycle, it is normal for new exhaust system and muffler to smoke until oil residue burns off.



Exhaust Flange Orientation

View from front

Fig. 4

#111707(2,5,7) / #1117035


Parts Diagram

NO.	DESCRIPTION	QTY	PART #
1	Yoshimura Stainless Steel Manifold	4	1117SDM
2	Yoshimura Stainless Steel Flange	4	YZ117SDR-01
3	Medium Race Spring	10	RACE-SPS-1
4	Yoshimura Header	1	1117-404
5	Stainless Steel Muffler Clamp Stainless Steel or Titanium Sleeve use Carbon Fiber Sleeve use	1	CTS816X CTS816
6	Yoshimura Tailpipe	1	1117-419
7	Heatshield Bolts	2	RC116HSB
8	Yoshimura Heatshield	1	1117-HSR
9	Yoshimura TRC Muffler with Carbon Fiber Sleeve with Stainless Steel Sleeve with Titanium Sleeve with R22 Sleeve	1	CRTRC146W SRTRC146W TRTRC146W SRR22146C
10	Large 8mm Washer	2	8MMWASHERL
11	8mm Nut	1	8MMNUT
12	Small Race Spring	4	RACE-SPX-1
13	Aluminum Spacer	1	ALS-014
14	8mmX45mm Flanged Hex Head Bolt	1	M8X45H
**	Muffler Clamp Heat Insulator	1	HT SHLDTRS
**	Spring Puller Tool	1	ST-200
**	Yoshimura Vinyl Sticker	1	17029