



YOSHIMURA

RESEARCH&DEVELOPMENT OF AMERICA, INC.

5420 DANIELS STREET STE A, CHINO CA., 91710 · (800)634-9166 · (909)628-4722 · FACSIMILE (909)591-2198

www.yoshimura-rd.com

YOSHIMURA PERFORMANCE EXHAUST SYSTEM

**SUZUKI
2008-2012
GSX1300R
HAYABUSA**

1121262	STAINLESS STEEL TRS SLIP-ON SYSTEM WITH CARBON FIBER SLEEVE
1121265	STAINLESS STEEL TRS SLIP-ON SYSTEM WITH STAINLESS STEEL SLEEVE
1121267	STAINLESS STEEL TRS SLIP-ON SYSTEM WITH TITANIUM SLEEVE
1121272	STAINLESS STEEL TRC SLIP-ON SYSTEM WITH CARBON FIBER SLEEVE
1121275	STAINLESS STEEL TRC SLIP-ON SYSTEM WITH STAINLESS STEEL SLEEVE
1121277	STAINLESS STEEL TRC SLIP-ON SYSTEM WITH TITANIUM SLEEVE
1121235	STAINLESS STEEL R-22 SLIP-ON SYSTEM WITH HIGH POLISH SLEEVE



**THIS PRODUCT IS DESIGNED FOR USE IN CLOSED COURSE
RACING AND IS NOT INTENDED FOR HIGHWAY USE.**



NOTE: IN THE STATE OF CALIFORNIA, IT IS ILLEGAL TO MODIFY THE EMISSION CONTROL SYSTEM, WHICH INCLUDES THE FUEL INJECTION OF ANY VEHICLE.

Caution: Exhaust system can be extremely hot. Let motorcycle cool down before beginning installation.

Note: Read through all instructions before beginning installation.

Tools Needed:

Metric Socket Set
Ratchet and Extension
Metric Combination Wrench Set
Metric Allen Wrench Set
Torque Wrench

Installation Steps:

- 1 Remove stock mufflers, stock tailpipes, and stock exhaust gaskets.

NOTE: Stock exhaust gaskets will not be used between the stock header and the Yoshimura tailpipes.

- 2 Install rubber heat insulators to inside of Yoshimura muffler clamps.
- 3 Slide the CTS082(X) muffler clamp onto the left muffler and slide the CTS081(X) muffler clamp onto the right muffler (see Fig. 1).

NOTE: The part numbers are stamped onto the muffler clamps. The LEFT and RIGHT muffler clamps are NOT the same.

- 4 Slide exhaust collector clamps over the inlets of the Yoshimura tailpipes and install Yoshimura tailpipes and mufflers onto the stock headers.
- 5 Bolt mufflers to the stock muffler mount locations using stock muffler mount hardware (see Fig. 1).
- 6 Torque muffler mount bolts to 2.3 kgf-m (16.5 lb-ft).

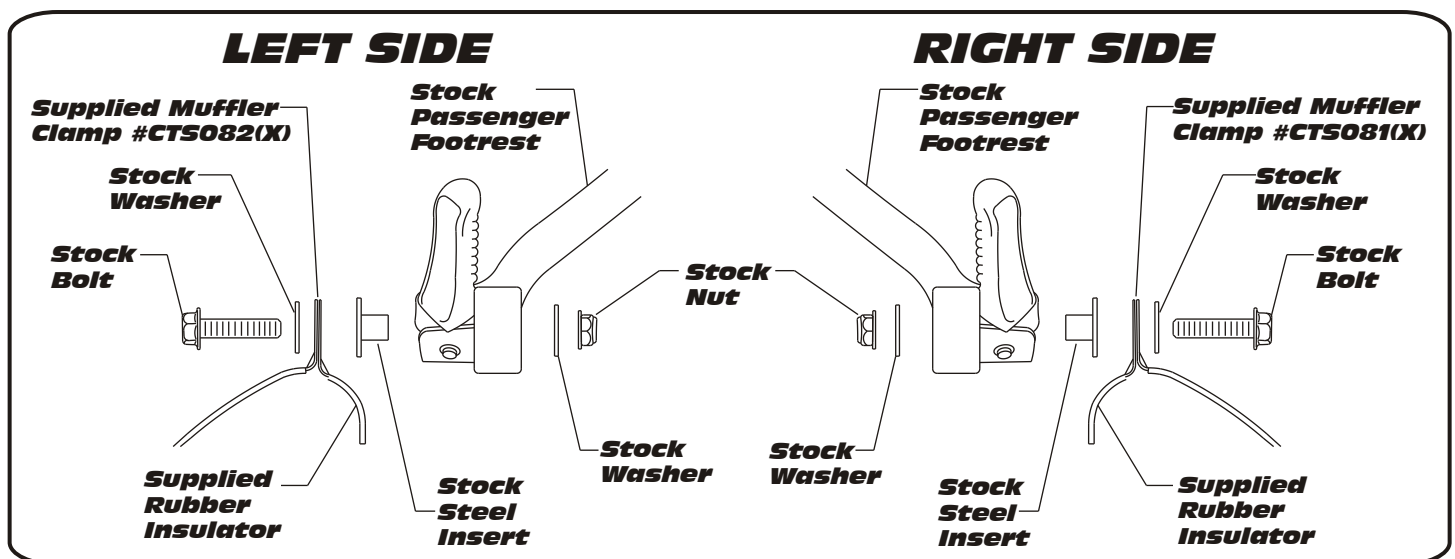


Fig. 1

- 7 Standing at the back of the motorcycle, check for proper alignment of the muffler. Adjust if necessary.

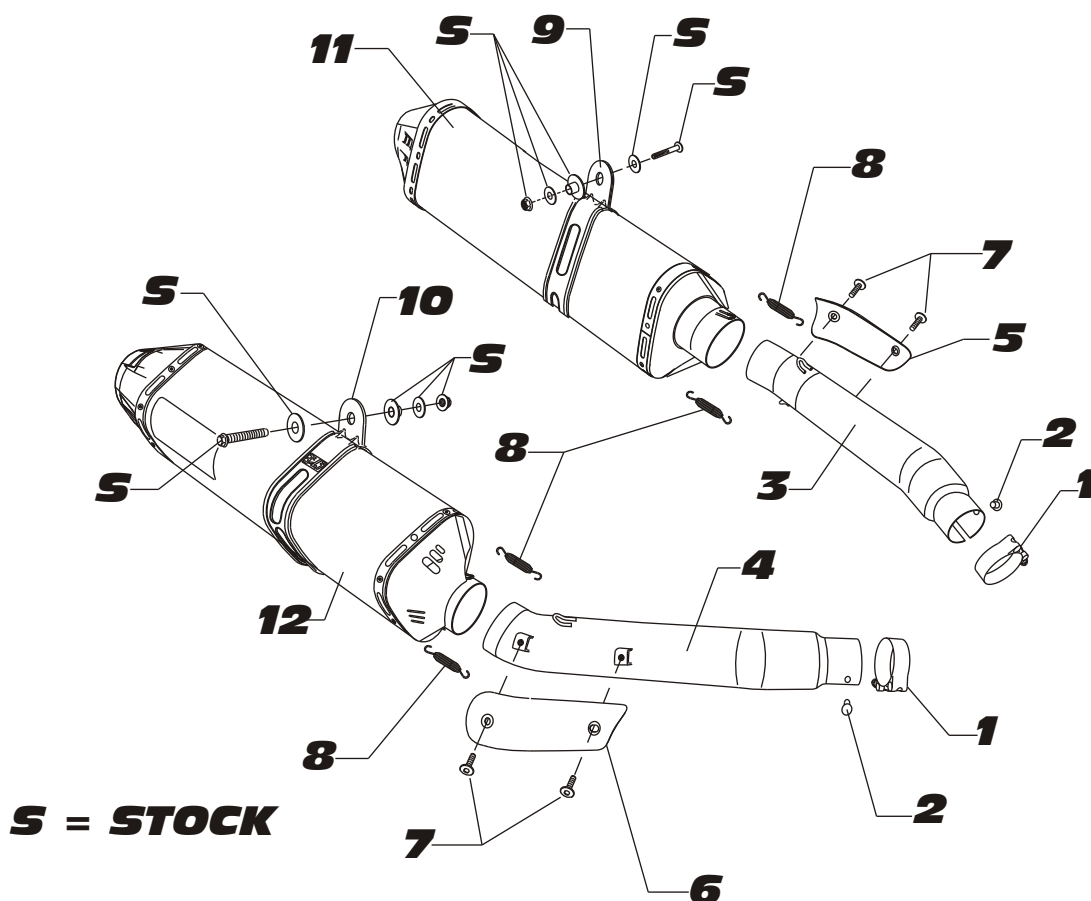
NOTE: To adjust fitment, it may be necessary to rotate the tailpipe or the muffler independently until proper alignment of the muffler is achieved. You will be installing a securing rivet into each tailpipe to prevent the tailpipe from rotating while the motorcycle is in operation.

- 8 Drill a 13/64" hole thru the securing hole of each tailpipe and into the stock header using the securing hole as a guide.

CAUTION: Always wear eye protection when using any power tools.

- 9 Insert one securing rivet into each drilled hole, slide supplied stainless steel collector clamp over rivet and torque clamp to 1.25 kg-m (9 lb-ft).
- 10 It is recommended that the muffler and tailpipe be wiped down with rubbing alcohol to remove oil and fingerprints. This will help prevent tarnishing of the finish after the exhaust is heated up.
- 11 Check for proper clearance between new exhaust system and motorcycle. (i.e. Swing-arm, body work, etc.) If any problem is found, please carefully follow through the installation steps again. If problem still persists, please call Yoshimura technical department at (800)634-9166 / in CA (909)628-4722.

Note: After starting motorcycle, it is normal for new exhaust system and muffler to smoke until oil residue burns off.

#112126(2,5,7) / #112127(2,5,7) / #1121235


Parts Diagram

NO.	DESCRIPTION	QTY	PART #
1	Exhaust Collector Clamp	2	22057
2	Collector Rivet	2	S-RIVET
3	Yoshimura Tailpipe (Left)	1	1121-426
4	Yoshimura Tailpipe (Right)	1	1121-427
5	Yoshimura Tailpipe Heatshield (Left)	1	1121-HSL
6	Yoshimura Tailpipe Heatshield (Right)	1	1121-HSR
7	Heatshield Mounting Bolts	4	RC116HSB
8	Medium Race Spring	4	RACE-SPS-1
9	Stainless Steel Muffler Clamp (Left) with Carbon Fiber Sleeve with Stainless Steel or Titanium Sleeve	1	CTS082 CTS082X
10	Stainless Steel Muffler Clamp (Right) with Carbon Fiber Sleeve with Stainless Steel or Titanium Sleeve	1	CTS081 CTS081X
11	Yoshimura Muffler (Left)	1	**
12	Yoshimura Muffler (Right)	1	**
**	Muffler Clamp Heat Insulator	2	HT SHLDTRS
**	TRS Insert Kit	1	TRS-INS-BK
**	Spring Puller Tool	1	ST-200
**	Yoshimura Vinyl Sticker	1	17029